

INSTRUCTIONS

1. Original and/or subsequent record used to evaluate the corner position.
2. Description of evidence found, note discrepancies in the record, state method of establishing lost or obliterated corners.
3. Description of monument and accessories set to perpetuate the corner position.
4. Sketch of corner, show all pertinent data which can best be shown in a sketch example, corner marking, topography ties, position of accessories, etc.
5. Certification must be signed and sealed by Land Surveyor registered in the State of Montana.
6. Fill in Cross Index & Section Diagram at bottom of sheet.

CERTIFIED CORNER RECORDATION

Corner S ¼ Section 16T. 26 N, R. 28 W P.M.M.LINCOLN County

ORIGINAL RECORD: 21 September 1903, Set a porphyry stone, 14x10x6 ins., 10 ins. in the ground, for 1/4 sec. cor., marked ¼ on N. face; from which,
A fir, 10 ins. diam., bears N44°15'E, 34 lks. dist., marked ¼ S 16 BT
A fir, 8 ins. diam., bears S57°20'E, 38 lks. dist., marked ¼ S 21 BT

FOUND: Site shows signs of being graded or plowed over by logging equipment (stumps being pushed down hill). Found a bearing tree tag of J Neils Co. 1934 (with no paper trail), but it was loosely attached to the wrong side of the tree by a single nail in the center. No nails in attaching holes. Any possible bearing trees were rotted beyond recognition or in skid path. A stone, measuring correct with no scribing, was found downhill about 50 feet and lying on top of the ground.

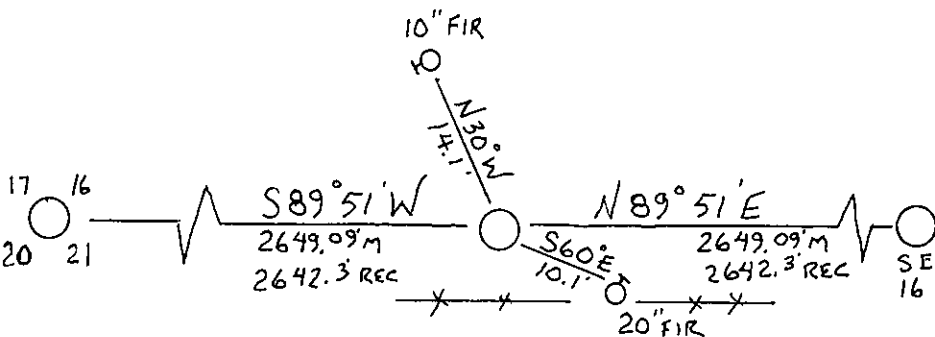
SET: A ¾" rebar, 30 " in length, with a 3.25" aluminum cap, projecting 6" and mounded in rocks. Position was single proportioned from the SE and SW corners of section 16.

T 26 N R 28 W
S 16
¼
+
S 21
2013

From which,

A 10" fir bears N30°W, 14.1 feet distant, with an aluminum Bearing Tree plate.

A 20" fir bears S60°E, 10.1 feet distant, with an aluminum Bearing Tree plate.



SKETCH OF CORNER

CERTIFICATION

I, Jeffrey E Underwood,
certify the information shown herein is true and correct.

Signature of County Clerk

I, Jeffrey E Underwood,
certify that this Corner Record correctly represents work
performed by me or under my supervision in compliance with
the "Corner Recordation Act" (70-22-101, et seq. MCA)

Signature of Licensed
Professional Land SurveyorDate: 26 August 2013 Rec. No. 19270Employer: North Hill Surveys, PO Box 313, Dayton, MT

Office of Clerk and Recorder, County of Lincoln This
"corner record" was filed for record on

_____, was noted on the cross-index
plat, and is assigned Page No. _____, in Book No. _____.

247283 BOOK: CCR CC&R'S PAGE: 12076

STATE OF MONTANA LINCOLN COUNTY

RECORDED: 09/11/2013 4:10 KOI: CC&R'S

TAMMY D. LAUER CLERK AND RECORDER

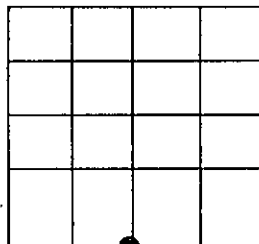
FEE: \$0.00

BY: Jeannine Lauer

County Official

Land Surveyors

Sec. 16



• — Corner this sheet