

INSTRUCTIONS

1. Original and/or subsequent record used to evaluate the corner position.
2. Description of evidence found, note discrepancies in the record, state method of establishing lost or obliterated corners.
3. Description of monument and accessories set to perpetuate the corner position.
4. Sketch of corner, show all pertinent data which can best be shown in a sketch example, corner marking, topography ties, position of accessories, etc.
5. Certification must be signed and sealed by Land Surveyor registered in the State of Montana.
6. Fill in Cross Index & Section Diagram at bottom of sheet.

CERTIFIED CORNER RECORDATION

Corner SW Section 16T. 26N, R. 28W P.M.M.LINCOLN County

ORIGINAL RECORD: 21 September 1903, Set a pine post, 3ft. long, 4ins. sq., 24 ins. in the ground, ...from which,
 A tamarack, 12 ins. diam., bears N73°15'E., 211 lks. dist., marked T26N R28W S16 BT,
 A tamarack, 8 ins. diam., bears S60°E., 50 lks. dist., marked T26N R28W S21 BT
 A tamarack, 12 ins. diam., bears S32°W., 100 lks. dist., marked T26N R28W S20 BT
 A tamarack, 8 ins. diam., bears N20°20'W., 30 lks. dist., marked T26N R28W S17 BT

REMONUMENTATION: 1964 BLM field notes, The cor. of secs. 16, 17, 20 and 21, as determined from the remains of three of the original bearing trees.

Set an iron post, 30 ins. long, 2.5 ins diam., 27 ins. in the ground, with brass cap mkd.

T26N R28W
 S 17 | S16
 S 20 | S 21
 1964

From which

A larch, 23 ins. diam., bears N73°15'E., 211 lks. dist., mkd. T26N R28W S16 BT (original)
 A pine, 6 ins. diam., bears S55°30'E., 25 lks. dist., mkd. T26N R28W S21 BT (new)
 A pine, 7 ins. diam., bears S54°30'W., 31 lks. dist., mkd. T26N R28W S20 BT (new)
 A pine, 9 ins. diam., bears N74°W., 25 lks. dist., mkd. T26N R28W S17 BT (new)

FOUND: Brass cap as described in 1964, 7" above ground, under barbed wire fence, 6 feet east of the fence corner.

From which

A larch, 29 ins. diam., bears N73°15'E., 211 lks. dist., mkd. T26N R28W S16 BT
 A pine stump, 12 ins. diam., bears S55°30'E., 25 lks. dist., mkd. T26N R28W S21 BT
 A pine log, 12 ins. diam., lies on the ground NW of corner, mkd. T26N R28W S17 BT

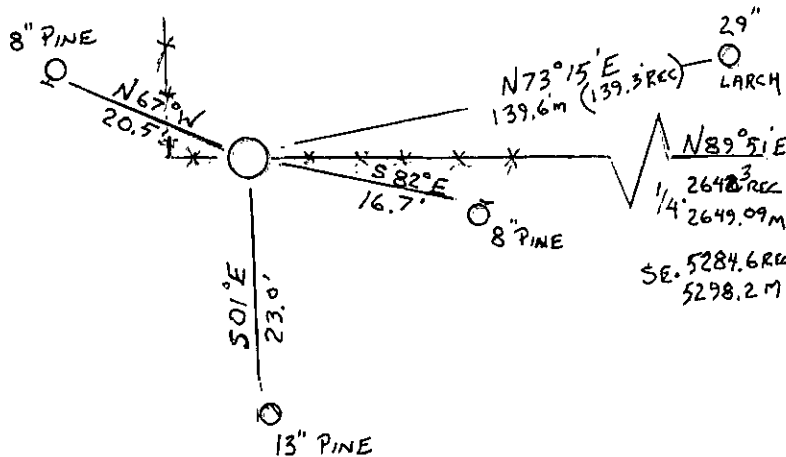
SET: New aluminum bearing tree plates on trees-

From the brass cap

A 8" pine bears S82°E, 16.7 feet distant.

A 13" pine bears S01°E, 23.0 feet distant.

A 8" pine bears N67°W, 20.5 feet distant.



SKETCH OF CORNER

CERTIFICATION

I, Jeffrey E Underwood
 certify the information shown herein is true and correct.

Signature of Ground Party Chief

I, Jeffrey E Underwood
 certify that this Corner Record correctly represents work performed by me or under my direction in compliance with the "Corner Recordation Act" (27-02-01, et seq., MCA)

Signature of Surveyor & Seal

Date: 26 August 2013 Reg. No. 19270

Employer: North Hill Surveys, P. O. Box 313, Dayton, MT

Office of Clerk and Recorder, County of Lincoln. This
 "corner record" was filed for record on

_____, was noted on the cross-index
 plat, and is assigned Page No. _____, in Book No. _____.

247282 BOOK: CCR CC&R'S PAGE: 12075
 STATE OF MONTANA LINCOLN COUNTY
 RECORDED: 09/11/2013 4:05 KOI: CC&R'S
 TAMMY D. LAUER CLERK AND RECORDER
 FEE: \$0.00 BY: Jeannie Lauer
Deputy

County Official

Land Surveyors

Sec. 16

• — Corner this sheet