

1. Original and/or subsequent record used to evaluate the corner position.
2. Description of evidence found, note discrepancies in the record, state method of establishing lost or obliterated corners.
3. Description of monument and accessories set to perpetuate the corner position.
4. Sketch of corner, show all pertinent data which can best be shown in a sketch example, corner marking, topography ties, position of accessories,
5. Certification must be signed and sealed by Land Surveyor registered in the State of Montana.

CERTIFIED CORNER RECORDATIONCorner: C-N 1/16th; Sec. 28T. 26N.R. 28W. P.M.M. Lincoln County

Record: No previous record

Found: No evidence found

2009 Perpetuation At a position established by the survey and section breakdown of Section 28, we set a 5/8"x30" rebar, 26" in the ground affixed with a 3 1/4" U.S.F.S. aluminum cap, marked as shown below, from which we establish the following reference monuments:

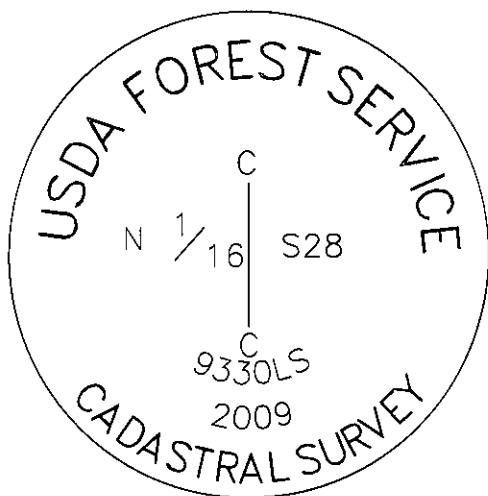
A 7" Lodgepole pine, bears S26°W, 22.1 ft., with an "X" cut at breast height
An 11" Ponderosa pine, bears S62°E, 3.1 ft., scribed CN 1/16 S28 BT

We build a mound of stone around the monument.

We set a galvanized steel post with U.S.F.S. decals P54-1 & P71-10, west, 1.5 ft. of the monument.

We paint red bands on the bearing trees and attach U.S.F.S. signs 54-3 & 54-9.

SEE COS NO. 3991

**SKETCH OF CORNER****CERTIFICATION**

I, Chad R. Breuer
certify the information shown herein is true and correct.

Chad R. Breuer
Signature Ground Party Chief

I, Ken E Jenkins
certify that this Corner Record correctly represents work performed by me or under my direction in compliance with the Corner Recordation Act" (70-22501, 1544 M.C.A.)

Ken E Jenkins
Signature of Surveyor & Seal

Date: 10/2009 Reg. No. 9330 LS

Employer: Montana Northwest Company

PO Box 8777, Missoula, MT 59807

406-721-4033 Project No. 1617-09

Office of Clerk and Recorder, County of _____, This "corner

record" was filed for record on

was noted on the cross-ind

book No. _____

224825 BOOK: CCR CC&R'S PAGE: 11451 Pages: 1

STATE OF MONTANA LINCOLN COUNTY

RECORDED: 03/05/2010 8:54 KOI: CC&R'S

TAMMY D. LAUER CLERK AND RECORDER

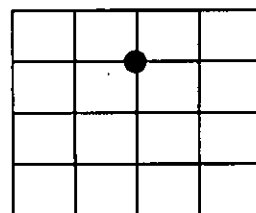
FEE: \$0.00

TO: MONTANA NORTHWEST COMPANY P.O. BOX 8777, MISSOULA, MONTANA

Cross Index No.

S-11 T. 26N R 28W PMM

Sec. 28



● Corner this sheet