

CERTIFIED CORNER RECORDATION

Corner NE Sec S27 T. 26 N. R. 28 W. P.M.M. LINCOLN County

I. Record: 1903 GLO original survey by C. Albee: Set a porphyry stone, 12x10x5 ins., 8 ins. in the ground, marked with 2 notches on the E. and S. edges from which:

- A fir, 12 ins. diam., bears N.69°35'E., 20 lks. (13.20 ft.) dist., mkd. T26N R28W S23 BT.
- A fir, 8 ins. diam., bears S.11°25'E., 35 lks. (23.10 ft.) dist., mkd. T26N R28W S26 BT.
- A fir, 8 ins. diam., bears S.42°W., 33 lks. (21.78 ft.) dist., mkd. T26N R28W S27 BT.
- A fir, 14 ins. diam., bears N.41°30'W., 25 lks. (16.50 ft.) dist., mkd. T26N R28W S22 BT.

II. Found: A sandstone, 13x9x6 ins., 8 ins. in the ground loosely set, with 2 notches on the S and E edges.

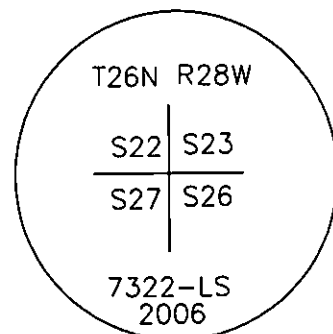
III. Perpetuation: At the corner point, monumented by the above described stone, Set a aluminum post, 30 ins. long, 2 1/2 ins. diam., 22 ins. in the ground with a 3 1/4 in. diam. aluminum cap mkd. as shown below from which:

- A fir, 7 ins. diam., bears S.37°E., 8.50 ft. dist., mkd. T26N R28W S26 BT.
- A pine, 9 ins. diam., bears N.71°E., 8.50 ft. dist., mkd. T26N R28W S23 BT.
- A fir, 10 ins. diam., bears N.48°W., 14.80 ft. dist., mkd. T26N R28W S22 BT.
- A fir, 14 ins. diam., bears S.36°W., 24.60 ft. dist., mkd. T26N R28W S27 BT.

Buried the original stone in a raised mound of stone around the set aluminum monument.

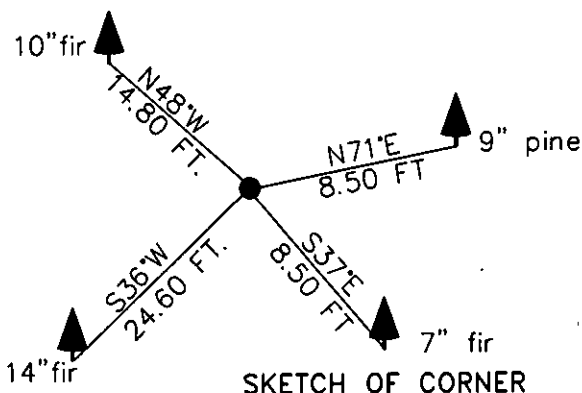
Set a steel post with Land survey sticker 3 ft. West on line.

Painted faces and 6 in. wide red bands on all bearing trees and attached USFS Land Survey Monument and Bearing Tree signs.



Magnetic declination: 18° East
Equipment used: Hand compass and loggers tape

Kootenai Surveyors Inc., 314 California Av., Libby, MT. 59923 (406) 293-4354



SKETCH OF CORNER

CERTIFICATION

I, Kelly Rooney
certify the information shown herein is true and correct.

Kelly Rooney
Signature Ground Party Chief

I, Alvah F. Hughes
certify that this Corner Record correctly represents work performed by me or under my direction in compliance with the "Corner Recordation Act" (70-22-101, et seq., M.C.A.)

Alvah F. Hughes
Signature of Surveyor & Seal

Date: 05/16/2006 Reg. No. 7322-LS 2006

Employer: Kootenai Surveyors Inc.

Office of Clerk and Recorder, County of Lincoln. This "corner

record" was filed for r 194417 BOOK: CCR CC&R'S PAGE: 10932 Pages: 1

was noted on the cro: STATE OF MONTANA LINCOLN COUNTY
RECORDED: 06/01/2006 9:35 KOI: CC&R'S

book No. CORAL M. CUMMINGS CLERK AND RECORDER

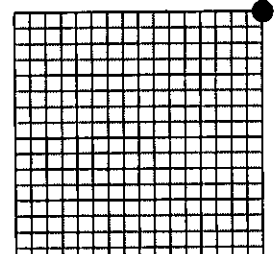
FEE: \$0.00

TO: KOOTENAI SURVEYORS INC. P.O. BOX 393, LIBBY, MT 59923

Cross Index No. R 17 T. 26N. R. 28W. P.M., MT

Adopted July 1, 1981, Montana Board of Professional Engineers & Land Surveyors

Sec. 27



• corner this sheet