

CERTIFIED CORNER RECORDATION

Corner NW Sec 27 T. 26 N. R. 28 W. P.M.M. LINCOLN County

- I. Record: 1903 GLO original survey by C. Albee :Set a sandstone, 22x8x5ins., 17 ins. in the ground, marked with 2 notches on the S. and 3 notches on the E. edge and scribed 4 bearing trees.

1964 BLM Remon: Set an iron pipe with brass cap from the original stone monument and the remains of two of the original bearing trees:

A fir, 20 ins. diam., bears N.58 3/4°E., 12 lks. (7.92 ft.) dist., with an overgrown blaze.

A fir, 21 ins. diam., bears S.39°W., 15 lks. (9.90 ft.) dist., with overgrown blaze.

New bearing trees:

A spruce, 13 ins. diam., bears S.32°E., 21 lks.(13.86 ft.) dist., mkd. T26N R28W S27 BT.

A spruce, 11 ins. diam., bears N.74°W., 26 lks.(17.16) dist., mkd. T26N R28W S21 BT.

- II. Found: 3 1/4 in. diam. BLM brass cap on a 2 1/2 in. diam. iron pipe firmly set from which:

A fir, 23 ins. diam., bears N.58°E., 7.92 ft. dist., with overgrown face.

A fir, 25 ins. diam., bears S.39°W., 9.90 ft. dist., with overgrown face.

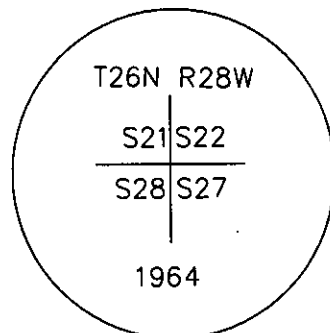
A spruce, 16 ins. diam., bears N.74°W., 17.16 ft. dist., with visible scribing.

- III. Perpetuation: Establish one new bearing tree described below:

A spruce, 6 ins. diam., bears S.22°E., 16.90 ft. dist. mkd. T26N R28W S27 BT.

Painted faces and 6 in. wide red bands to all bearing trees and attached USFS Land Survey Monument and Bearing Tree signs.

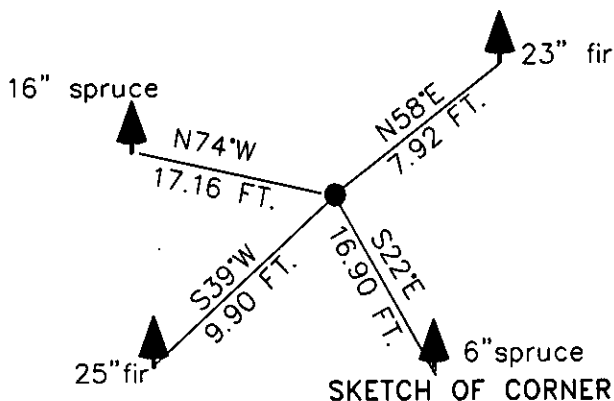
Set a steel post with Land Survey Monument sticker 3 ft. East on line.



Magnetic declination: 18° East

Equipment used: Hand compass and loggers tape

Kootenai Surveyors Inc., 314 California Av., Libby, MT. 59923 (406) 293-4354



CERTIFICATION
Kelly Rooney
 certify the information shown herein is true and correct.
Kelly Rooney
 Signature Ground Party Chief
Alvan F. Hughes
 certify that this Corner Record correctly represents work performed by me or under my direction, in compliance with the "Corner Recordation Act" (70-22-301, et seq.)
Alvan F. Hughes
 Signature of Surveyor & Seal
 Date: 05/16/2006 Reg. No. 7322-LS
 Employer: Kootenai Surveyors Inc.

Office of Clerk and Recorder, County of Lincoln This "corner

record" was filed for record on 194416 BOOK: CCR CC&R'S PAGE: 10931 Pages: 1

was noted on the cross-index STATE OF MONTANA LINCOLN COUNTY

book No. RECORDED: 06/01/2006 9:30 KOI: CC&R'S

CORAL M. CUMMINGS CLERK AND RECORDER

FEE: \$0.00

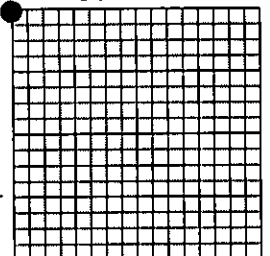
BY: Frankie L. Lundy

TO: KOOTENAI SURVEYORS INC. P.O. BOX 393, LIBBY, MT 59923

Cross Index No. R 13 T. 26N. R. 28W. P.M.M. MT

Adopted July 1, 1981, Montana Board of Professional Engineers & Land Surveyors

Sec. 27



• corner this sheet