

CERTIFIED LAND CORNER RECORDATION
(REFERENCE FSM 7153.53)

DESCRIPTION OF CORNER EVIDENCE FOUND, AND ORIGINAL RECORD (IF KNOWN)

(Record) Limestone 12x10x6
(Found) B.L.M. Brass Cap

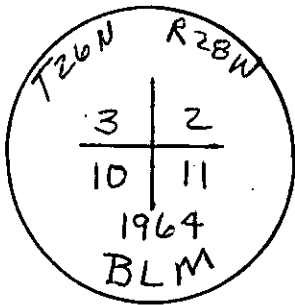
(Record) A Fir 8 ins diam bears N30°20'E 30 lks dist.
(Found) No trees or remains
(New B.T.) 8" fir bears N7°13'E 50.1 ft. dist marked T26NR28WS2 BT

(Record) A pine 14 ins. diam. bears S80°10'E 23 lks. dist.
(Found) No remains
No trees within limits in this Quad for new B.Tt

(Record) A fir 10 ins. diam. bears S62°20'W 99 lks dist.
(found) No remains

(New B.T.) A 14 ins. diam. y. Pine bears S74°W 72.4 ft. dist marked T26NR28W S10BT.
DESCRIPTION OF MONUMENT AND ACCESSORIES ESTABLISHED
TO PERPETUATE THE ORIGINAL LOCATION OF THIS CORNER:

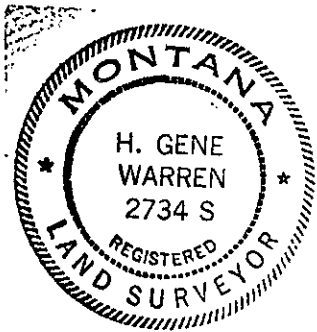
(Record) A pine 8 ins. diam bears N63°30'W 53 lks dist. Date of work: Oct. 1980
(Found) A 14 ins. diam. y. Pine bears N63°W 51 lks dist marked T26NR28W S3 BT



SKETCH, WITH COURSE AND DISTANCE TO ADJACENT CORNERS IF DETERMINED IN THIS SURVEY.
(MAY SKETCH OR PASTE REPRODUCTION ON REVERSE SIDE.)

SEE C.O.S. NO. 899

Surveyor's Seal



I, _____
certify that the information shown herein is true and correct.

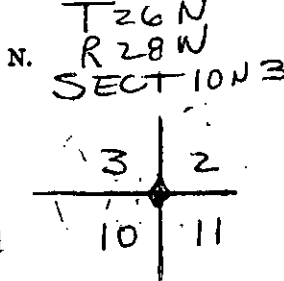
Signature of Ground Party Chief

H. Gene Warren

I, _____
certify that I have carefully performed or reviewed the work done on the diagrammed corner as reported on this recordation form and approve the same.

H. Gene Warren
Signature of Surveyor

DIAGRAM OF CORNER:



✦ = Corner recorded on the sheet

2734 S
Registration Number

Office of Clerk and Recorder, County of Lincoln

This "corner record" was filed for record on the 9th day of July, 1981, was noted on the cross-index plat and is assigned page No. 1074, in book No. 1

Thomas L. Vaughan
County Official

Cross Index No. G-17 T. 26N R. 28W Mer.

