

CERTIFIED LAND CORNER RECORDATION

(REFERENCE FSM 7153.53)

DESCRIPTION OF CORNER EVIDENCE FOUND, AND ORIGINAL RECORD (IF KNOWN)

(Record) Set a sandstone 12x10x8 8 ins in ground.

(Found) B.L.M. Brass Cap set in 1964

(Record) A Pine 14 ins diam. bears N61°05'E 66lks.

(Found) A 14" Pine bears N37°E 52.8' Scribed 1/4 S3BT

(Record) A Fir 14 ins. diam. bears S43°45'E 42 lks dist.

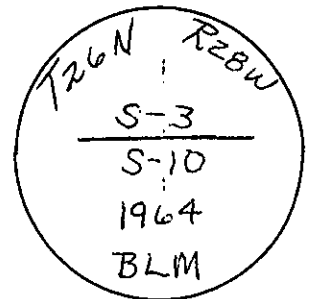
(found) A dead fir on ground bears S43°45'E 42 lks dist with scribing still readable.

(Marked new B.T.) A 14" diam. Yellow pine bears S60°E 53.5' dist. scribed 1/4 S10BT

DESCRIPTION OF MONUMENT AND ACCESSORIES ESTABLISHED TO PERPETUATE THE ORIGINAL LOCATION OF THIS CORNER:

Date of work: Oct. 1980

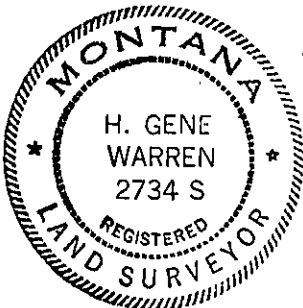
As brass cap is well set we leave in place.



SKETCH, WITH COURSE AND DISTANCE TO ADJACENT CORNERS IF DETERMINED IN THIS SURVEY. (MAY SKETCH OR PASTE REPRODUCTION ON REVERSE SIDE.)

SEE C.O.S. NO 899

Surveyor's Seal



I, _____ certify that the information shown herein is true and correct.

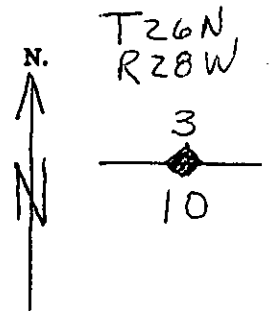
Signature of Ground Party Chief

H. Gene Warren

I, _____ certify that I have carefully performed or reviewed the work done on the diagrammed corner as reported on this recordation form and approve the same.

Signature of Surveyor

DIAGRAM OF CORNER:



= Corner recorded on the sheet

2734 S Registration Number

Office of Clerk and Recorder, County of Lincoln

This "corner record" was filed for record on the 7th day of July 1981, was noted on the cross-index plat and is

assigned page No. 1070, in book No. 1

Signature of County Official

Cross Index No. E-15 T. 26N R. 28W Mer.