

CERTIFIED LAND CORNER RECORDATION
(REFERENCE FSM 7153.53)

DESCRIPTION OF CORNER EVIDENCE FOUND, AND ORIGINAL RECORD (IF KNOWN)

No original record

DESCRIPTION OF MONUMENT AND ACCESSORIES ESTABLISHED
TO PERPETUATE THE ORIGINAL LOCATION OF THIS CORNER:

Date of work: 11/80

Set aluminum post 27" long, 2 1/4" dia. with aluminum cap 20" in ground,
from which:

A Doug-fir 6" dia. bears N31°W 10.4 ft. mkd. CW 1/16 BT.
A Doug-fir 6" dia. bears S43°E 10.7 ft. mkd. CW 1/16 BT.

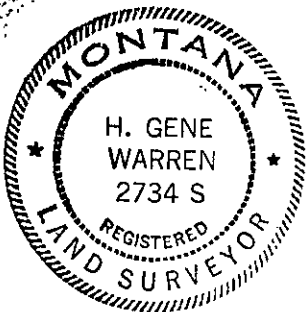
Sketch of
alum. cap



SKETCH, WITH COURSE AND DISTANCE TO ADJACENT CORNERS IF DETERMINED IN THIS SURVEY.
(MAY SKETCH OR PASTE REPRODUCTION ON REVERSE SIDE.)

SEE C.O.S. NO. 899

Surveyor's Seal



I, David L. Ohler
certify that the information shown herein is true and
correct.

David L. Ohler

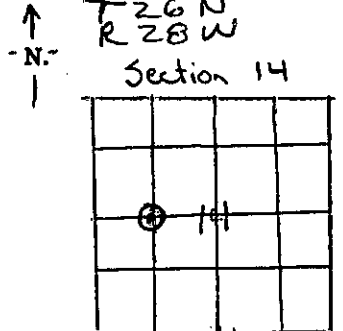
Signature of Ground Party Chief

I, H. Gene Warren
certify that I have carefully performed or reviewed the
work done on the diagrammed corner as reported on this
recording form and approve the same.

H. Gene Warren

Signature of Surveyor

DIAGRAM OF CORNER:



⊙ = Corner recorded on the sheet

2734-3
Registration Number

Office of Clerk and Recorder, County of Lincoln

This "corner record" was filed for record on the 7th day of July, 1981, was noted on the cross-index plat and is

assigned page No. 1860, in book No. 1

Clarence L. Vaughan, Jr. Deputy Clerk
County Official

Cross Index No. L-18 T. 26 N. R. 28 W. Mer.