

# CERTIFIED CORNER RECORDATION

Corner Center 1/4, Section 33 T. 26 N. R. 28 W. P.M.M. Lincoln County

G.L.O. Record

This corner was never set by G.L.O.

Subsequent Record

There is no subsequent record that indicates that this corner was ever set. Certificate of Survey No. 590 (Surveyor Owens) and Certificate of Survey No. 1055 (Surveyor D. K. Marquardt) both computed this location based on an incorrect position for the East 1/4 corner. (See my record for said corner.)

1999 Remonumentation by S. R. Smith

At the intersection of the North-South and East-West midsection lines, I set an aluminum pipe, 2 1/2" diameter, 30" long, with 3 1/4" diameter Montana Department of Transportation aluminum cap. Top of cap is 4" above ground (no stones available for collar). Cap is marked as shown below, from which,

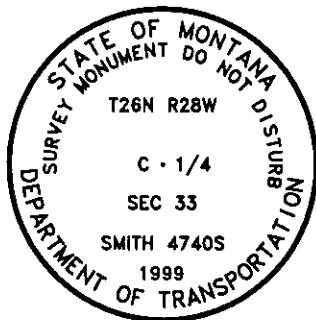
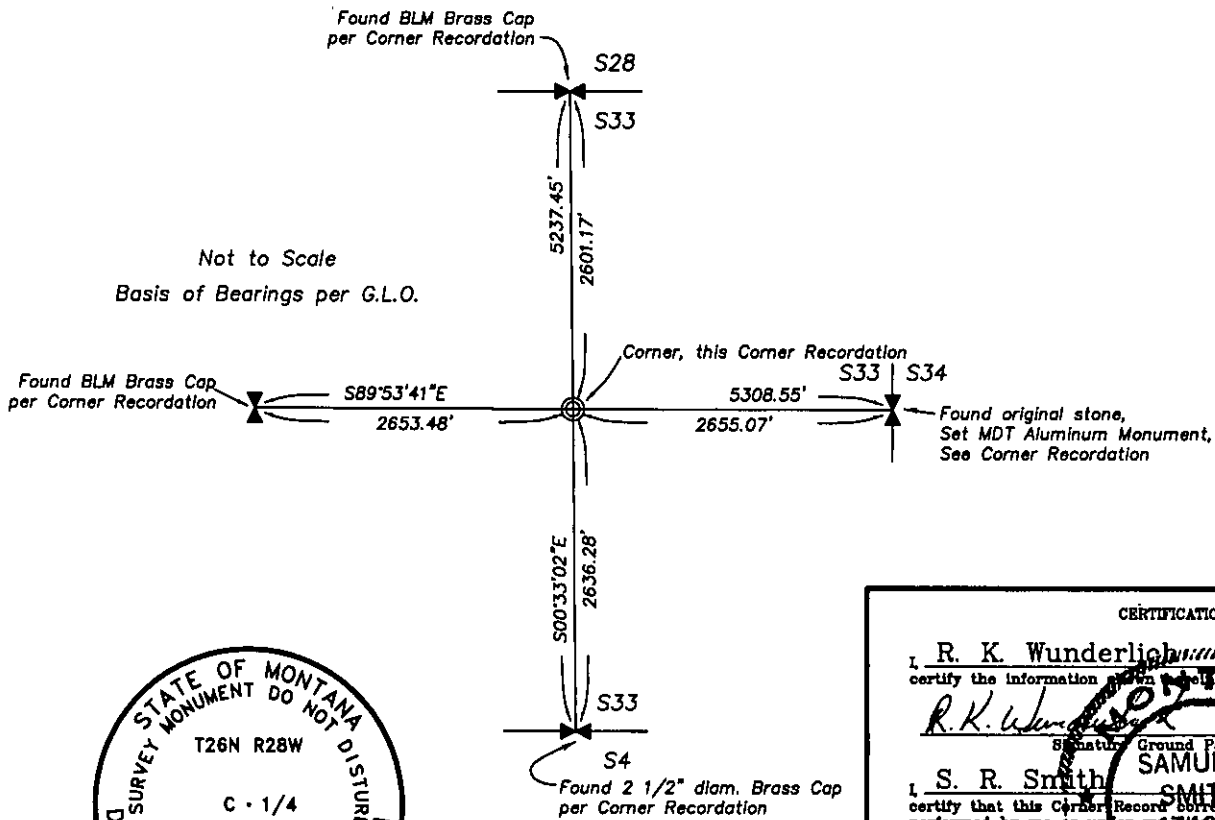
A 5' long galvanized steel post with M.D.T. survey decal attached, bears East, 1.0' distant.

A larch, 15" DBH, scribed "C 1/4 BT", bears South 18° West 34.9' distant.

A douglas fir, 8" DBH, scribed "C 1/4 BT", bears North 55° West 14.25' distant.

I marked the two Bearing Trees with a snow blaze, facing corner, and painted a 4" red band at blaze height. Placed a Bearing Tree sign above the snow blaze on each tree.

Bearings listed above in remonumentation section were measured with a hand compass, declination 19 1/2' East.

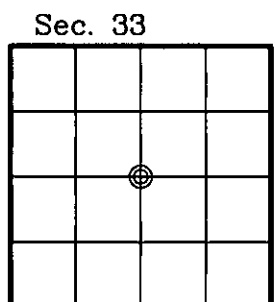


**SKETCH OF CORNER**

|   |                       |
|---|-----------------------|
| CERTIFICATION   |                       |
| I, <u>R. K. Wunderlich</u>  |                       |
| certify the information herein to be true and correct.  |                       |
| I, <u>S. R. Smith</u>   |                       |
| certify that this Corner Record correctly represents work performed by me or under my direct supervision in compliance with the "Corner Recordation Act" (76-22-101, et seq., M.C.A.) |                       |
| Date: <u>04/09/99</u>   | Reg. No. <u>10548</u> |
| Employer: <u>Smith Surveying</u>  |                       |

Office of Clerk and Recorder, County of Lincoln. This "corner record" was filed for record on 12/10/2001 was noted on the cross-index plat and is assigned page No. 10548 in book No. \_\_\_\_\_

Coral M. Cummins  
County Official



Cross Index No. X-11 T. 26 N. R. 28 W. P.M.M.

Adopted July 1, 1981, Montana Board of Professional Engineers & Land Surveyors