

Metcalf ②

CERTIFIED LAND CORNER RECORDATION

DESCRIPTION OF CORNER EVIDENCE FOUND, AND ORIGINAL RECORD (IF KNOWN)

G.L.O. Orig. Record: Set a Fir Post for M.C.
From Which Original B.T.'S:

- 1) A 10" Spruce bears N65°30'E-31 Lks.
- 2) A 10" Fir bears S10°W-71 Lks.

Found Fir Post rotted out and lying on ground.
Found 10" Fir B.T. as Desc. in orig. G.L.O. in good condition
Did not find 10" Spruce and appears to have been destroyed.

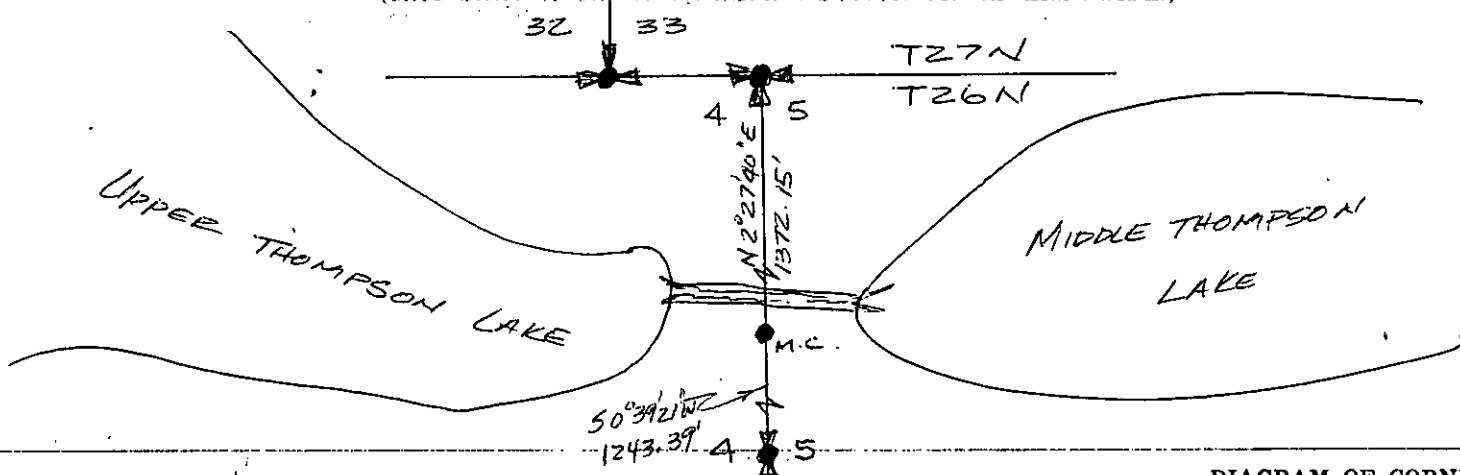
DESCRIPTION OF MONUMENT AND ACCESSORIES ESTABLISHED
TO PERPETUATE THE ORIGINAL LOCATION OF THIS CORNER:

Date of work: Sept. 1980

Set a 5/8" Capped rebar, MDL 4232-S
For Meander Cor., on South side of waterway,
For M.C. between Sec. 4 and 5, T26N, R27W

No new bearing trees available.

SKETCH, WITH COURSE AND DISTANCE TO ADJACENT CORNERS IF DETERMINED IN THIS SURVEY.
(MAY SKETCH OR PASTE REPRODUCTION ON REVERSE SIDE.)



Surveyor's Seal



I, KENNETH KERN
certify that the information shown herein is true and correct.

Kenneth Kern

Signature of Ground Party Chief

I, MELVIN D. LAUTEREN
certify that I have carefully performed or reviewed the work done on the diagrammed corner as reported on this recordation form and approve the same.

Melvin D. Lauteren

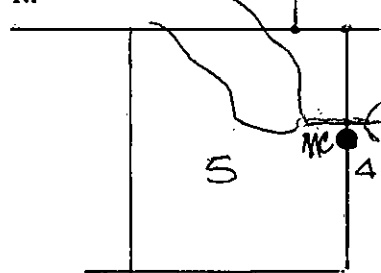
Signature of Surveyor

4232-S

Registration Number

DIAGRAM OF CORNER:

N.



● = Corner recorded on the sheet
MC WEST BDY SEC
4, T26N, R27W

Office of Clerk and Recorder, County of Lincoln

This "corner record" was filed for record on the 25th day of November, 1980, was noted on the cross-index plat and is assigned page No. 929, in book No. 929

Eleanor S. Vaughn by Bonnie Delaney
County Official Deputy

Cross Index No. 9-C T. 26N R. 27W Mer.