

CERTIFIED LAND CORNER RECORDATION

DESCRIPTION OF CORNER EVIDENCE FOUND, AND ORIGINAL RECORD (IF KNOWN)

G.L.O. Orig. Record - Spruce post 3 1/2 Long, 5" square, 24" in ground.

From which original B.T.'s:

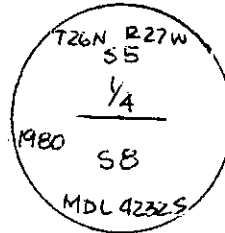
- A Fir, 10 ins. Dia., bears S21°E, 35 Lks.
- A Tamarck, 24 ins. Dia., bears N17°W, 17 Lks.

Found 4"X4" Post rotted at base and lying on ground.  
Found Original B.T.S in good condition.

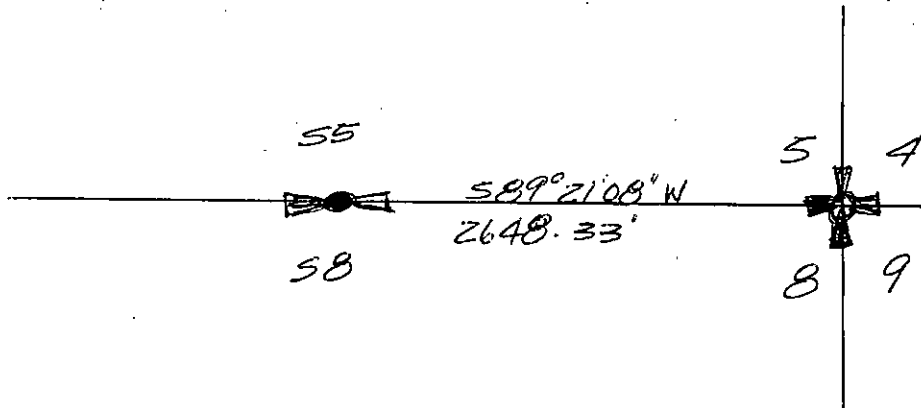
DESCRIPTION OF MONUMENT AND ACCESSORIES ESTABLISHED TO PERPETUATE THE ORIGINAL LOCATION OF THIS CORNER:

Date of work: Sept. 1980

Set an Alum. Post 3 1/4" Dia., 30" Long, 26" in the ground with Alum. Cap Mkd:



SKETCH, WITH COURSE AND DISTANCE TO ADJACENT CORNERS IF DETERMINED IN THIS SURVEY. (MAY SKETCH OR PASTE REPRODUCTION ON REVERSE SIDE.)



Surveyor's Seal



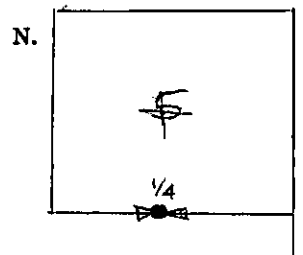
I, KENNETH KERN certify that the information shown herein is true and correct.

Kenneth Kern  
Signature of Ground Party Chief

I, MELVIN D. LAUTEREN certify that I have carefully performed or reviewed the work done on the diagrammed corner as reported on this recordation form and approve the same.

Melvin D. Lauteren  
Signature of Surveyor

DIAGRAM OF CORNER:



● = Corner recorded on the sheet  
S 1/4 S5, T 26N, R 27W

4232-S  
Registration Number

Office of Clerk and Recorder, County of Lincoln

This "corner record" was filed for record on the 25th day of November 1980, was noted on the cross-index plat and is assigned page No. 928, in book No. 928

Eleanor L. Vaughn by Bonnie Delaney  
County Official Deputy

Cross Index No. 7-E T. 26N R. 27W Mer.