

metalf (5)

CERTIFIED LAND CORNER RECORDATION

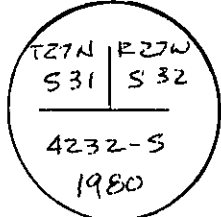
DESCRIPTION OF CORNER EVIDENCE FOUND, AND ORIGINAL RECORD (IF KNOWN)

G.L.O. Orig. Record for corner of Sec. 31 and 32 only, T27N, R27W:
Shale Stone 14"X10"X6", 10 inches in the ground, Mkd. with 5 notches on the East, and 1 notch on the West from which found Original B.T.'S:
A Tamarack, 18 ins., Dia., bears N79°E, 75 Lks.
A Tamarack, 20 ins., Dia., bears S68°E, 51 Lks.
No evidence of original stone found.
Both original B.T.'S were found and scribed plainly. (See back for closing corners)

DESCRIPTION OF MONUMENT AND ACCESSORIES ESTABLISHED TO PERPETUATE THE ORIGINAL LOCATION OF THIS CORNER:

Date of work: Sept. 1980

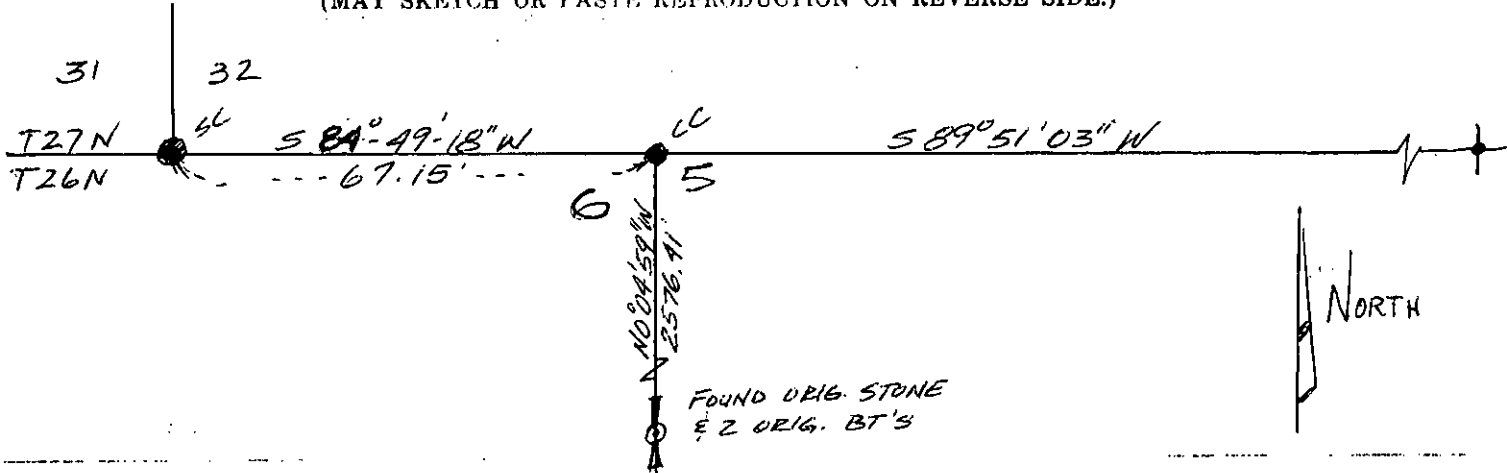
For Cor. of Sec. 31 and 32 Only:
Set an Aluminum Post 3 1/4" Dia., 30" Long, 20" in ground with Alum. cap mkd:
No Additional B.T.'S Required.



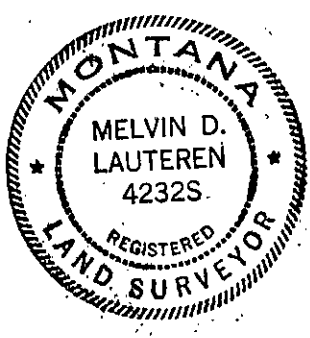
For Closing Cor. of Sec. 5 and 6 =
Set an Alum. Post 3 1/4" Dia., 30" Long, 26" in the ground w/Alum. Cap marked:
From Which New B.T.:
mkd: S5, T26N, R27W, B.T.
A 30" Larch-S5°00'W-7.6 ft.



SKETCH, WITH COURSE AND DISTANCE TO ADJACENT CORNERS IF DETERMINED IN THIS SURVEY. (MAY SKETCH OR PASTE REPRODUCTION ON REVERSE SIDE.)



Surveyor's Seal

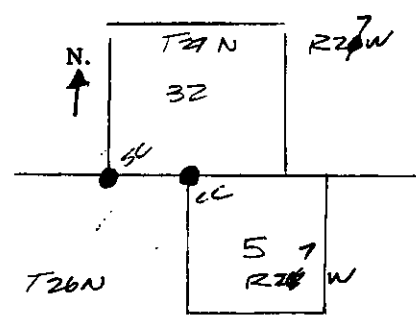


I, KENNETH KERN
certify that the information shown herein is true and correct.
Kenneth Kern
Signature of Ground Party Chief

I, MELVIN D. LAUTEREN
certify that I have carefully performed or reviewed the work done on the diagrammed corner as reported on this recordation form and approve the same.
Melvin D. Lauteren
Signature of Surveyor

4232-S
Registration Number

DIAGRAM OF CORNER:



● = Corner recorded on the sheet
SC, SW COR S-32
CC, NW COR S-5

Office of Clerk and Recorder, County of Lincoln

This "corner record" was filed for record on the 25th day of November, 1980, was noted on the cross-index plat and is

assigned page No. 927-A, in book No. 927-A Elaine S. Vaughn by Ronnie Delaney
County Official Deputy

G.L.O. Original Record for closing corner of Sections 7 and 6 only, T26N, R27W;
4"X4"X3' LONG Post marked C. T26N, R27W, on South

S5 on the East

S6 on the West with 5 grooves East face and 1 groove on the West

From which Original B.T.'S:

A Pine, 10 ins. Dia., bears S67°30'E 63 Lks.

A Tamarack, 20 ins. Dia., bears S77°W, 53 Lks.

Found original post rotted and broken at base, lying on ground, marked plainly.
Original Tamarack B.T. was found in good condition. Pine B.T. was not found
and assumed destroyed.