

Metzger 3

CERTIFIED LAND CORNER RECORDATION

DESCRIPTION OF CORNER EVIDENCE FOUND, AND ORIGINAL RECORD (IF KNOWN)

G.L.O. Orig. Record - Tamarack Post 3' Long, 5" square, 24" in the ground for S 1/4, Sec. 32, T27N, R27W marked 1/4 Sec. 32 on the North face, S5 on the South face. From which Orig. B.T.'S:

A Tamarack, 1 1/2" Dia., bears N55°W, 55Lks.
A Pine, 8" Dia., bears S62°W, 13 Lks.
Found original post with scribes, Rotted at base and on ground.
Original Tamarack B.T. found and in good condition.
Original Pine B.T. found dead and on ground, scribed still in good condition.

DESCRIPTION OF MONUMENT AND ACCESSORIES ESTABLISHED TO PERPETUATE THE ORIGINAL LOCATION OF THIS CORNER:

Date of work: Sept. 1980

For South 1/4 Cor. Sec. 32, T27N, R27W, set an Alum. Post 3 1/4" Dia., 30" Long, 2 1/2" in ground with Alum. Cap marked.

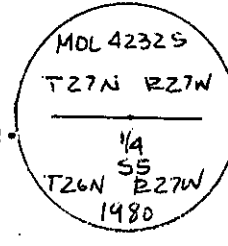
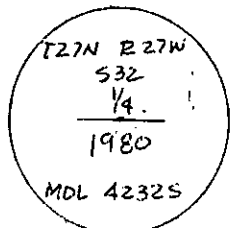
For North 1/4 Cor. Sec. 5 T26N, R27W, Set an Alum. Post 3 1/4" Dia., 30" Long 2 1/2" in ground with Alum. Cap Mkd.

From Which New B.T.'S:

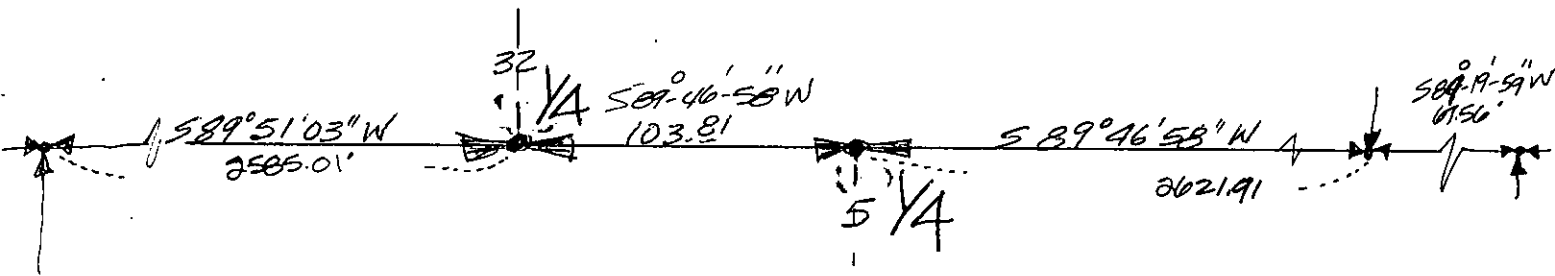
From which New B.T.'S"

2 1/2" Larch-S34°W-41.7 ft. Mkd=1/4 S32-B.T.

No B.T.'S available 10 ft. East to edge of Lake.



SKETCH, WITH COURSE AND DISTANCE TO ADJACENT CORNERS IF DETERMINED IN THIS SURVEY. (MAY SKETCH OR PASTE REPRODUCTION ON REVERSE SIDE.)



Surveyor's Seal



I, KENNETH KERN certify that the information shown herein is true and correct.

Signature of Kenneth Kern

Signature of Ground Party Chief

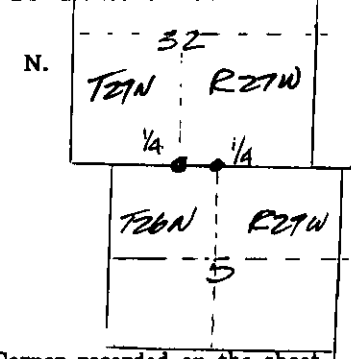
I, MELVIN D. LAUTEREN certify that I have carefully performed or reviewed the work done on the diagrammed corner as reported on this recordation form and approve the same.

Signature of Melvin D. Lauteren

Signature of Surveyor

4232-S Registration Number

DIAGRAM OF CORNER:



⊙ = Corner recorded on the sheet

S 1/4 SEC. 32 N 1/4 SEC 5

Office of Clerk and Recorder, County of Lincoln

This "corner record" was filed for record on the 25th day of November 1980, was noted on the cross-index plat and is assigned page No. 925, in book No. 925

Eleanor A. Vaughn by Bonnie Delaney County Official Deputy