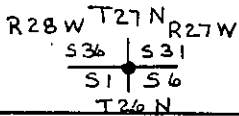


**INSTRUCTIONS**

1. Original and/or subsequent record used to evaluate the corner position.
2. Description of evidence found, note discrepancies in the record, state method of establishing lost or obliterated corners.
3. Description of monument and accessories set to perpetuate the corner position.
4. Sketch of corner, show all pertinent data which can best be shown in a sketch example, corner marking, topography files, position of accessories, etc.
5. Certification must be signed and sealed by Land Surveyor registered in the State of Montana.
6. Fill in Cross Index & Section Diagram at bottom of sheet.



**CERTIFIED CORNER RECORDATION**

Corner \_\_\_\_\_ T. 26 N R. 27 W P.M.M. LINCOLN County

ORIGINAL AND/OR  
SUBSEQUENT RECORD

ORIGINAL RECORD: Set a Shale Stone 18"x14"x8", 13" in ground marked with 6 notches on each edge;

From Which:

- A Fir, 10" in diam. bears N78°E, 69 lks. dist. mkd. T27N R27W, S31 B.T.
- A Tamarack, 18" in diam. bears S20°E, 35 lks. dist. mkd. T26N R27W, S6 B.T.
- A Tamarack, 12" in diam. bears S65°W, 90 lks. dist. mkd. T27N R28W, S1. B.T.
- A Tamarack, 8" in diam. bears N30°W, 34 lks. dist. mkd. T27N R28W S36 B.T.

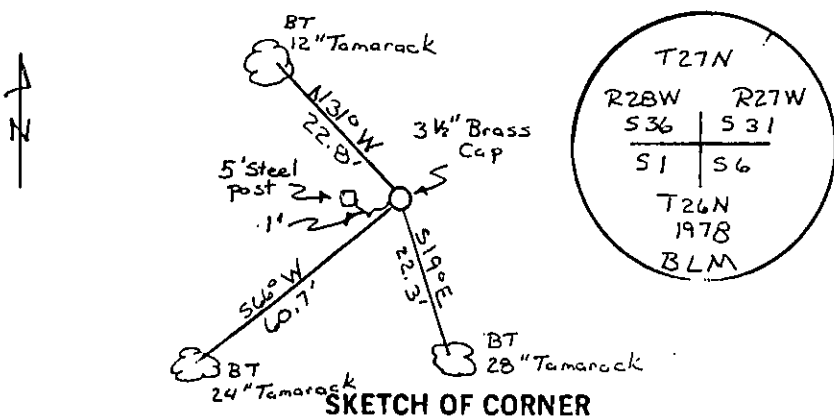
EVIDENCE FOUND

Found 3 1/2" Brass Cap, 1' above mound of stone. From which a 12" Tamarack bears N31°W, 22.8'. A 24" Tamarack bears S66°W, 60.7'. A 28" Tamarack bears S19°E, 22.3'. All BT Trees have BLM tags.

PERPETUATION

Set 5' Steel Fence Post 1' West of Monument.

Note: Declination used - 18° E  
Measurements taken to center of tree.



**CERTIFICATION**

I, Glenn R. Howard  
certify the information shown here is true and correct.

Glenn R. Howard  
Signature Ground Party Client

**TERRY L. DRUYVESTEIN** MONTANA  
certify that this Corner Record correctly represents work performed by me or under my direction in compliance with the "Corner Recordation Act" (70-22-101, et seq., M.C.A.)

Terry L. Druyvestein  
Signature of Surveyor & Seal

Date: 02/90 Reg. No. 2927 ES  
Employer: STENSATTER DRUYVESTEIN & ASSOCIATES

Office of Clerk and Recorder, County of Lincoln. This "corner record" was filed for record on 1-4-91 was noted on the cross-index plat and is assigned page No. 4409 in book No. \_\_\_\_\_

Grant H. Siegel by Bill Buschhoff  
County Official

A-1	26 N	27 W
A-25	26 N	28 W
Z-1	T. 27 N	R. 27 W
Z-25	27 N	28 W

Cross Index No. \_\_\_\_\_ T. \_\_\_\_\_ R. \_\_\_\_\_ P.M.M.

