

INSTRUCTIONS

1. Original and/or subsequent record used to evaluate the corner position.
2. Description of evidence found, note discrepancies in the record, state method of establishing lost or obliterated corners.
3. Description of monument and accessories set to perpetuate the corner position.
4. Sketch of corner, show all pertinent data which can best be shown in a sketch example, corner marking, topography (ies, position of accessories, etc.
5. Certification must be signed and sealed by Land Surveyor registered in the State of Montana.
6. Fill in Cross Index & Section Diagram at bottom of sheet.

CERTIFIED CORNER RECORDATION

Corner $\frac{1}{4}$ $\begin{matrix} S9 \\ \bullet \\ S16 \end{matrix}$ T. 26 N R. 27 W P.M.M. LINCOLN County

ORIGINAL AND/OR SUBSEQUENT RECORD

ORIGINAL RECORD: Set a Granite Stone, 15"x10"x10", 10" in the ground marked $\frac{1}{4}$ on N face,
From Which:
A Fir, 10" in diam. bears N 22° E 93 lks. dist. marked $\frac{1}{4}$ S 9 B.T.
A Pine, 10" in diam. bears S 31° 30' W 65 lks. dist. marked $\frac{1}{4}$ S 16 B.T.

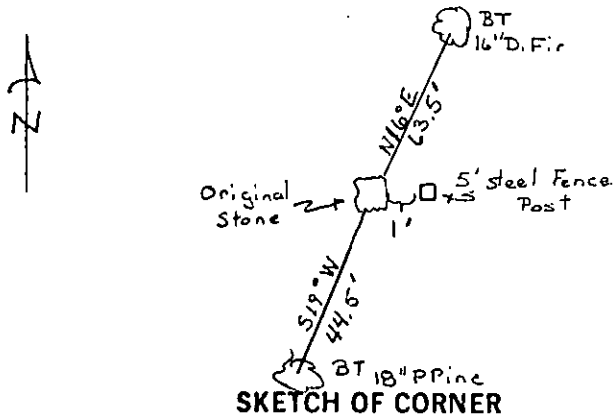
EVIDENCE FOUND

Found Original Stone with Scribing Visible. From which a 18" P. Pine bears S 19° W, 44.5'. A 16" D. Fir bears N 16° E, 63.5'

PERPETUATION

Left Stone in place and set 5' Steel Fence Post 1' East of monument. Tagged both BT's with MARLS Land Monument Sign and Painted Red Band around Trees.

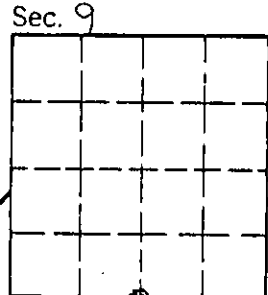
Note: Declination used - 18° E
Measurements taken to center of Tree



SKETCH OF CORNER

CERTIFICATION
I, Glenn R. Howard
certify the information shown herein is true and correct.
Glenn R. Howard
Signature Ground Party
TERRY L. DRUYVESTEIN
I, Terry L. Druyvestein
certify that this Corner Record correctly represents a survey performed by me or under my direction in compliance with the "Corner Recordation Act" (70-22-101, et seq., M.C.A.)
Terry L. Druyvestein
Signature of Surveyor & Seal
Date: 07/90 Reg. No. 2927
Employer: STENSATTER DRUYVESTEIN & ASSOCIATES

Office of Clerk and Recorder, County of Lincoln. This "corner record" was filed for record on 1-4-91 was noted on the cross-index plat and is assigned page No. 4406, in book No. _____
Grant BT Sugil by Bill Beck
County Official



Cross Index No. J-11 T. 26 N R. 27 W P.M.M. • - corner this sheet