

INSTRUCTIONS

1. Original and/or subsequent record used to evaluate the corner position.
2. Description of evidence found, note discrepancies in the record, state method of establishing lost or obliterated corners.
3. Description of monument and accessories set to perpetuate the corner position.
4. Sketch of corner, show all pertinent data which can best be shown in a sketch example, corner marking, topography lies, position of accessories, etc.
5. Certification must be signed and sealed by Land Surveyor registered in the State of Montana.
6. Fill in Cross Index & Section Diagram at bottom of sheet.

CERTIFIED CORNER RECORDATION

Corner S 8 $\frac{1}{4}$ S 9 T. 26 N R. 27 W P.M.M. LINCOLN County

ORIGINAL AND/OR
SUBSEQUENT RECORD

ORIGINAL RECORD: Set a Limestone, 17" x 12" x 6", 12" in the ground marked $\frac{1}{4}$ on W, face;

From Which:

A Tamarack, 15" in diam. bears N 12° 30' E, 20 lks. dist. marked $\frac{1}{4}$ S 9 B.T.

A Tamarack, 10" in diam. bears S 73° W, 16 lks. dist. marked $\frac{1}{4}$ S 8 B.T.

EVIDENCE FOUND

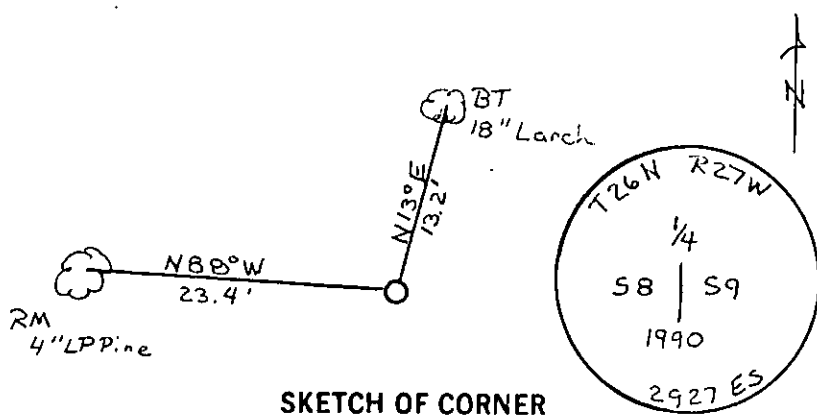
Original Stone Note Found. Found original BT with grown over blaze and Anaconda F.P. Tag dated 1967, bears N 13° E, 13.2'.

PERPETUATION

Set 3 1/4" Alum. Cap on 3/4" x 24" Rebar from Original BT. Established New RM Tree on 4" LP. Pine bears N 88° W, 23.4'. Painted and placed a MARLS Land Monument Sign on the original BT and New RM Tree

Note: Declination used - 20° E

Measurements taken to center of Tree.



SKETCH OF CORNER

CERTIFICATION

1. Rod Cone

certify the information shown herein is true and correct.

Signature Ground Party (Child)

TERRY L. DRUYVESTEIN

certify that this Corner Record correctly represents work performed by me or under my direction in compliance with the "Corner Recordation Act" (70-22-101 et seq.), M.C.A. DRUYVESTEIN

Signature of Surveyor & Seal

Date: 07/90 Reg. No. 2927 ES

Employer: STENSATTER DRUYVESTEIN ASSOCIATES REGISTERED SURVEYOR

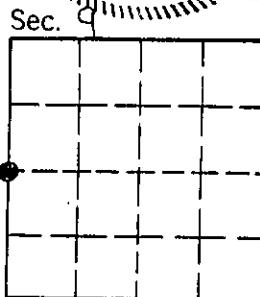
Office of Clerk and Recorder, County of Lincoln. This "corner record" was filed for record on 1-4-91

was noted on the cross-index plat and is assigned page No. 4403, in

book No. _____

Janet BT Angel by Bill Buckell
County Official

Cross Index No. G-9 T. 26 N R. 27 W P.M.M.



• - corner this sheet