

INSTRUCTIONS

1. Original and/or subsequent record used to evaluate the corner position.
2. Description of evidence found, note discrepancies in the record, state method of establishing lost or obliterated corners.
3. Description of monument and accessories set to perpetuate the corner position.
4. Sketch of corner, show all pertinent data which can best be shown in a sketch example, corner marking, topography ties, position of accessories, etc.
5. Certification must be signed and sealed by Land Surveyor registered in the State of Montana.
6. Fill in Cross Index & Section Diagram at bottom of sheet.

CERTIFIED CORNER RECORDATION

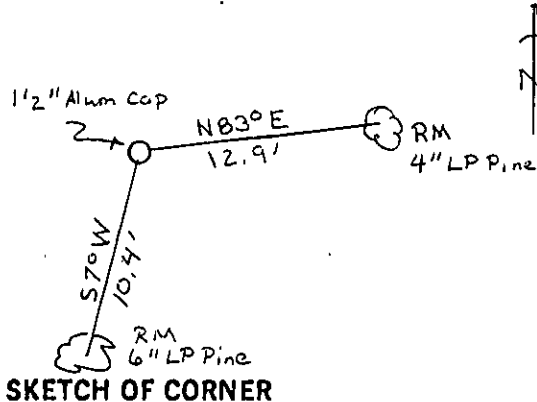
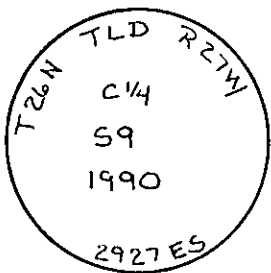
Corner C 1/4 Sec 9 T. 26 N R. 27 W P.M.M. LINCOLN County

ORIGINAL AND/OR  
SUBSEQUENT RECORD None

EVIDENCE FOUND None

PERPETUATION Set 1 1/2" Alum. Cap on 5/8" x 24" Rebar. Established Two RM's a 6" LP Pine bears 57°W, 10.4', and a 4" LP Pine bears N83°E, 12.9'. Both RM Trees Blazed and tagged with MARLS Land Monument Sign.

Note: Declination used - 18°E  
Measurements taken to center of tree.



CERTIFICATION

I, Red Cone  
certify the information shown herein is true and correct.

Red Cone  
Signature Ground Party Chief

**TERRY L. DRUYVESTEIN**  
MONTANA  
certify that this Corner Record correctly depicts the work performed by me or under my direction in compliance with the "Corner Recordation Act" (70-22-101, et seq., M.C.A.)

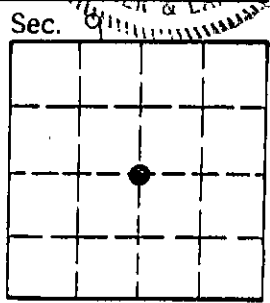
Terry L. Druyvestein  
Signature of Surveyor & Seal 2927ES

Date: 07/90 Reg. No. 2927 ES  
Employer: STENSATER DRUYVESTEIN & ASSOCIATES

Professional Engineer & Land Surveyor

Office of Clerk and Recorder, County of Lincoln. This "corner record" was filed for record on 1-4-91 was noted on the cross-index plat and is assigned page No. 4396 in book No. \_\_\_\_\_

Janet St. Angel by Bill Beckoff  
County Official



Cross Index No. G-11 T. 26 N R. 27 W P.M.M.

• corner this sheet