

## INSTRUCTIONS

1. Original and/or subsequent record used to evaluate the corner position.
2. Description of evidence found, note discrepancies in the record, state method of establishing lost or obliterated corners.
3. Description of monument and accessories set to perpetuate the corner position.
4. Sketch of corner, show all pertinent data which can best be shown in a sketch example, corner marking, topography ties, position of accessories, etc.
5. Certification must be signed and sealed by Land Surveyor registered in the State of Montana.
6. Fill in Cross Index & Section Diagram at bottom of sheet.

## CERTIFIED CORNER RECORDATION

Corner S 4  $\frac{1}{4}$  S 3 T. 26 N R. 27 W P.M.M. LINCOLN County

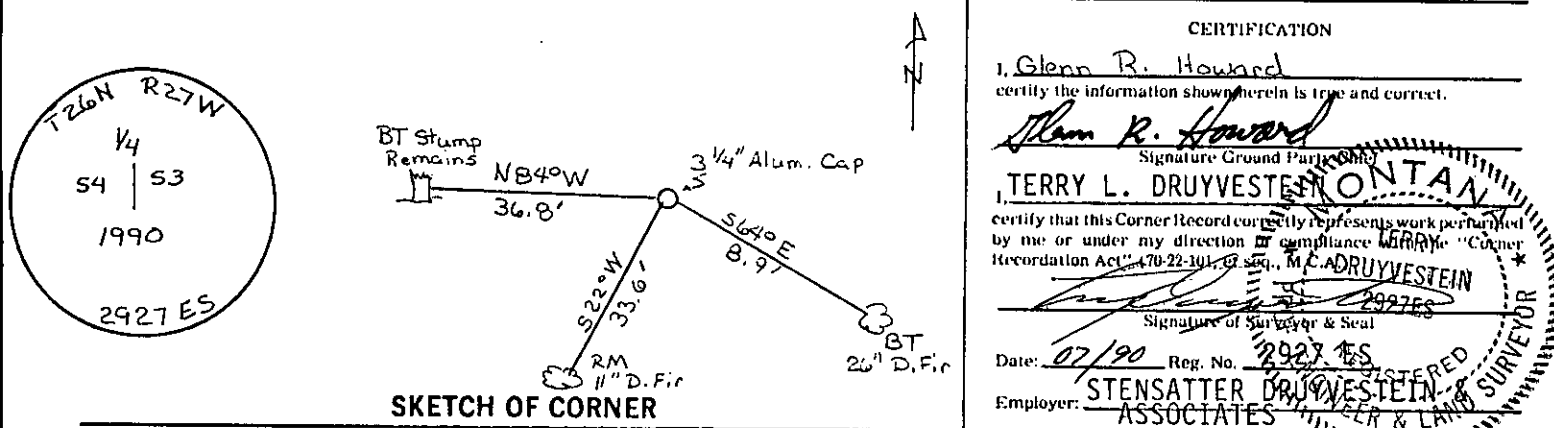
ORIGINAL AND/OR  
SUBSEQUENT RECORD

ORIGINAL RECORD: Set a Lime Stone 15"x12"x6", 10" in the ground, marked  $\frac{1}{4}$  on W face,  
From Which:  
A fir, 10" in diam. bears S57°30'E 121ks. dist. marked  $\frac{1}{4}$  S3 B.T.  
A fir, 12" in diam. bears N76°W 55' 1ks. dist. marked  $\frac{1}{4}$  S4 B.T.

EVIDENCE FOUND Original Stone not found. Found original BT bears S64°E, 8.9'.  
Original BT stump remains bears N84°W, 36.8'.

PERPETUATION Set 3 $\frac{1}{4}$ " Alum. cap from two original BT's. Set a 5' steel fence post at 1' North of monument, and mounded stones around the monument.  
Established new RM Tree, An 11" D. Fir bears S22°W 33.6', placed a MARLS Land Monument on the original BT and new RM tree

NOTE: Declination used - 19° E  
Measurements taken to the center of the Tree.

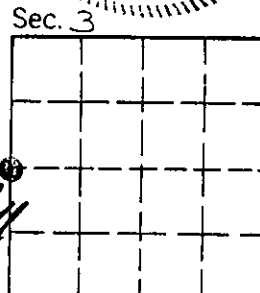


Office of Clerk and Recorder, County of Lincoln. This "corner record" was filed for record on 1-4-91

was noted on the cross-index plat and is assigned page No. 4391, in

book No. \_\_\_\_\_

Janet BF Sigel by Bill Buckoff  
County Official



Cross Index No. C-13 T. 26 N R. 27 W P.M.M.

• - corner this sheet