

CERTIFIED CORNER RECORDATION

Corner W 1/4 Cor S 5 T 26 N. R. 27 W. P.M.M. LINCOLN County

I. Record: 1902 GLO survey by Burton Adams :Set a limestone 20x8x5 ins., 15 ins. in the ground, marked 1/4 on W. face from which:

- A pine, 8 ins. diam., bears N.36°E., 14 lks. dist. (9.24 ft.) mkd. 1/4 S. 5 BT.
- A pine, 8 ins. diam., bears N.30°W., 23 lks. dist. (15.18 ft.) mkd. 1/4 S. 6 BT.

1991 Corner Recordation by Terry Druyvestein: Found original stone and the remains of original bearing trees, establish two new trees:

- A fir, 5 ins. diam., bears S.83°E., 5.80 ft. dist., marked RM.
- A Larch 8 ins. diam., bears S.56°W., 9.60 ft. dist., marked RM.

II. Found: A limestone 19x7x3 ins., loosely set, 3x7 ins. above ground with 1/4 mkd. on the W. face From which:

- A fir 7 ins. diam., bears S.83°E., 5.80 ft. dist., with visible scribing.
- A Larch, 8 ins. diam., bears S.56°W., 9.60 ft. dist., with visible scribing.
- A Lodgepole pine snag, 10 ins. diam. bears N.25°E., 8.50 ft. dist. with visible scribing.
- A Lodgepole pine stump, 10 ins. diam. bears N.28°W., 16.00 ft. dist. with visible scribing.

III. Perpetuation: At the found stone,s position, we set a 2 1/2 in. diam. Alum. pipe 30 ins. long 24 ins. in the ground, with a 3 1/4 in. diam. Alum. cap mkd. as shown below.

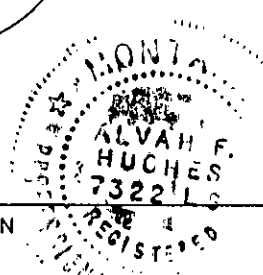
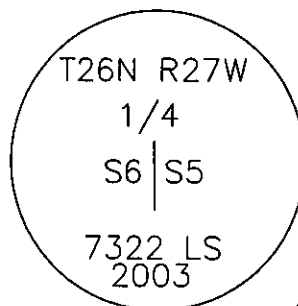
Raise a collar of stone 2 ft. base 1 ft. high and bury original stone along side.

Painted faces and 6 in. wide red bands to all bearing trees and attached Land Survey Monument and Bearing Tree signs.

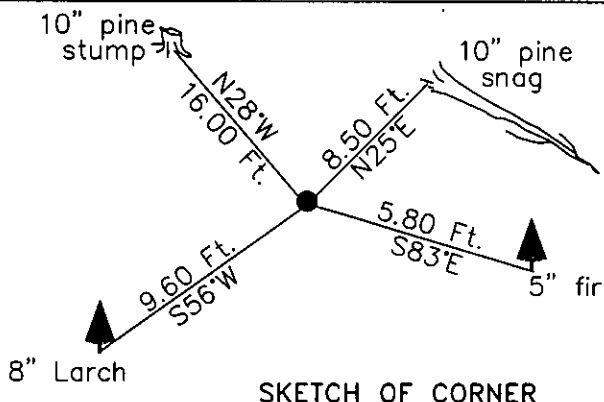
A steel post bears S. 1 ft. dist.

Magnetic declination: 18' East assumed

Equipment used: Hand compass and loggers tape



Kootenai Surveyors Inc., 314 California Av., Libby, MT. 59923 (406) 293-4354



CERTIFICATION

I, John Damon
certify the information shown herein is true and correct.
John Damon
Signature Ground Party Chief

I, Alvah F. Hughes
certify that this Corner Record correctly represents work performed by me or under my direction in compliance with the "Corner Recordation Act" (70-22-101, et seq., M.C.A.)
Alvah F. Hughes 7322 LS
Signature of Surveyor & Seal

Date: 12/15/04 Reg. No. 7322-LS
Employer: Kootenai Surveyors Inc.

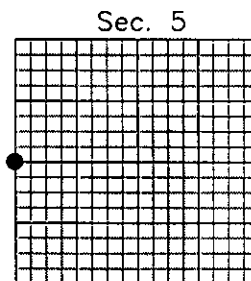
Office of Clerk and Recorder, County of Lincoln This "corner

record" was filed for reco
was noted on the cross-
book No. _____

181360 BOOK: CCR CC&R'S PAGE: 10755 Pages: 1
STATE OF MONTANA LINCOLN COUNTY
RECORDED: 12/17/2004 10:10 KOI: CC&R'S
CORAL M. CUMMINGS CLERK AND RECORDER
FEE: \$0.00 BY: *Coral M. Cummings*

Cross Index No. C 05 T. 26N. R. 27W. P.M., MT

Adopted July 1, 1981, Montana Board of Professional Engineers & Land Surveyors



• corner this sheet