

# CERTIFIED CORNER RECORDATION

Corner NW Sec Cor S 8 T 26 N. R. 27 W. P.M.M. LINCOLN County

I. Record: 1902 GLO survey by Burton Adams :Set a limestone 15x8x8 ins., 10 ins. in the ground marked with 5 notches on S. and 5 notches on E. edges from which:

- A pine, 15 ins. diam. bears N.29°30'E. 23 lks. dist. (15.18 ft.) mkd. T26N R27W S5 BT.
- A pine, 12 ins. diam. bears S.12°E. 41 lks. dist. (27.06 ft.) mkd. T26N R27W S8 BT.
- A pine, 15 ins. diam. bears S.59°W. 47 lks. dist. (31.02 ft.) mkd. T26N R27W S7 BT.
- A pine, 20 ins. diam. bears N.45°15'W. 53 lks. dist. (34.98 ft.) mkd. T26N R27W S6 BT.

## II. Found:

- A pine stump, 21 ins. diam. bears N.29°E., 15.18 ft. dist. with visible scribes.
- A pine stump, 24 ins. diam. bears N.45°W., 34.98 ft. dist. with visible scribes.

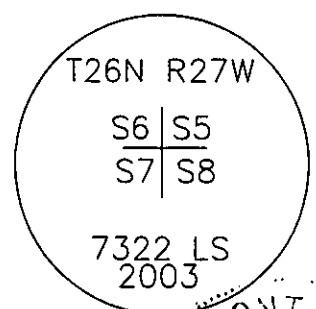
III. Perpetuation: At position determined by a distance distance intersection from original found bearing trees, we set a 2 1/2 in. diam. Alum. pipe 30 ins. long 24 ins. in the ground, with a 3 1/4 in. diam. Alum. cap mkd. as shown below from which:

- A Douglas fir, 6 ins. diam., bears N.41°E., 32.40 ft. dist., scribed T26N R27W S5 BT.
- A Larch, 6 ins. diam., bears S.49°E., 25.10 ft. dist., scribed T26N R27W S8 BT.
- A Larch, 3 ins. diam., bears S.56°W., 30.16 ft. dist., scribed X BT.
- A Douglas fir, 4 ins. diam., bears N.17°W., 49.00 ft. dist., scribed T26N R27W S6 BT.

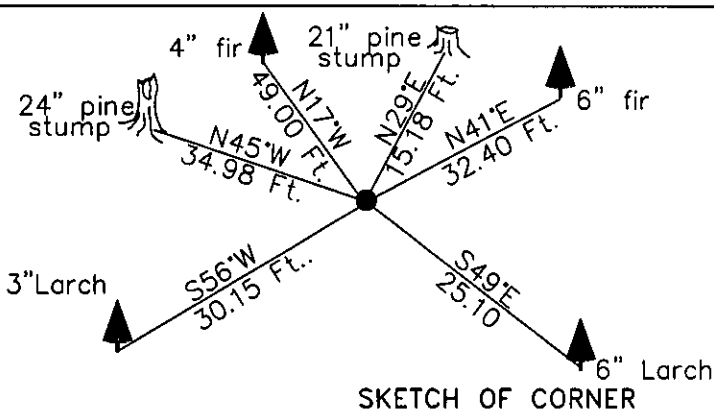
Painted faces and 6 in. wide red bands to all bearing trees and attached Land Survey Monument and Bearing Tree signs.  
Raise a collar of stone 2 ft. base 1 ft. high around set monument.

Magnetic declination: 18° East assumed

Equipment used: Hand compass and loggers tape



Kootenai Surveyors Inc., 314 California Av., Libby, MT. 59923 (406) 293-4354



CERTIFICATION

I, John Damon  
certify the information shown herein is true and correct.

John Damon  
Signature Ground Party Chief

I, Alvah F. Hughes  
certify that this Corner Record correctly represents work performed by me or under my direction in compliance with the "Corner Recordation Act" (70-22-101, et seq., M.C.A.)

Alvah F. Hughes  
Signature of Surveyor & Seal

Date: 12/15/04 Reg. No. 7322-LS  
Employer: Kootenai Surveyors Inc.

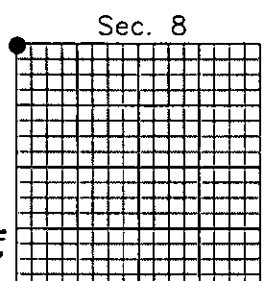
Office of Clerk and Recorder, County of Lincoln This "corner record" was filed for rec

was noted on the cross- 181359 BOOK: CCR CC&R'S PAGE: 10754 Pages: 1  
book No. STATE OF MONTANA LINCOLN COUNTY

RECORDED: 12/17/2004 10:09 KOI: CC&R'S  
CORAL M. CUMMINGS CLERK AND RECORDER  
FEE: \$0.00 BY: [Signature]

Cross Index No. E 05 T. 26N. R. 27W. P.M., MT

Adopted July 1, 1981, Montana Board of Professional Engineers & Land Surveyors



• corner this sheet