

INSTRUCTIONS

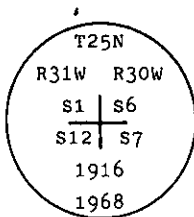
1. Original and/or subsequent record used to evaluate the corner position.
2. Description of evidence found, note discrepancies in the record, state method of establishing lost or obliterated corners.
3. Description of monument and accessories set to perpetuate the corner position.
4. Sketch of corner, show all pertinent data which can best be shown in a sketch example, corner marking, topography ties, position of accessories, etc.
5. Certification must be signed and sealed by Land Surveyor registered in the State of Montana.
6. Fill in Cross Index & Section Diagram at bottom of sheet.

CERTIFIED CORNER RECORDATION

Corner NW Cor. of Sec. 7 T. 25 N. R. 30 W. P.M.M. Lincoln County

I. 1916 G.L.O. record by S. Frank Walters: Set a iron post monument and four bearing trees.

1968 B.L.M. remonumentation record by Woodrow E. Damn et al: "The cor. of secs. 1, 6, 7 and 12, on the W. bdy. of the tp., monumented with an iron post, 3 ins. diam., firmly set, with 6 ins. protruding above the surface of the ground and witnessed by the remains of the original SW bearing tree, with the brass cap mkd. Add additional marks 1968 to brass cap.



from which:

The original bearing tree:

A stump hole, bears S61 1/4° W, 32 lks. dist., with fallen log mkd. T25N R31W S12 BT. (Record)

The new bearing trees:

A fir, 6 ins. diam., bears S51° W, 60 lks. dist., mkd. X BT.

A fir, 6 ins. diam., bears S16 1/2° W, 9 lks. dist., mkd. T25N R31W S12 BT."

II. Found a 3 ins. diam. iron pipe, 6 ins. above the ground, with 3 1/4 ins. diam. G.L.O. brass cap, marked as shown above, except 1968 not marked; from which:

A fir, 11 ins. diam., bears S51° W, 39.6 ft. (60 lks.) dist., healed face.

A fir, 14 ins. diam., bears S16 1/2° W, 6.0 ft. (9 lks.) dist., healed face.

III. Establish two new bearing trees:

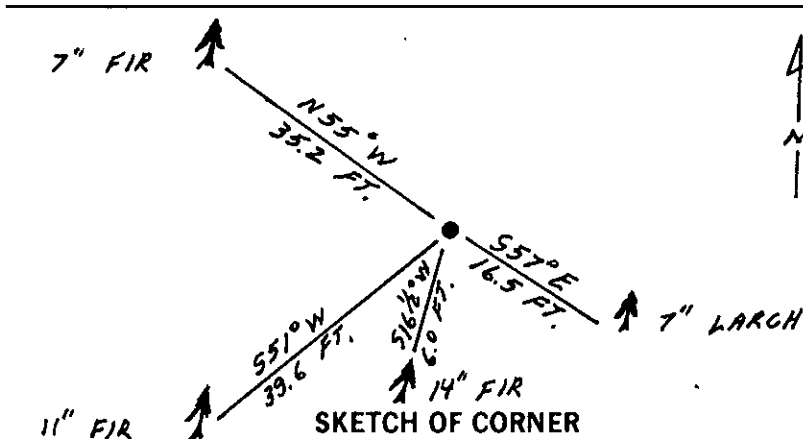
A larch, 7 ins. diam., bears S57° E, 16.5 ft. dist., mkd. T25N R30W S7 BT.

A fir, 7 ins. diam., bears N55° W, 35.2 ft. dist., mkd. T25N R31W S1 BT.

Set a 6 ft. galvanized steel guard post with Land Survey Marker and Property Boundary decals. East, 3 ft.

Painted red bands around the bearing trees and attached Land Survey Monument and Bearing Tree signs.

Magnetic Declination: 20° East



CERTIFICATION

I, Thomas M. Hommel
certify the information shown herein is true and correct.

Thomas M. Hommel
Signature Ground Party Chief

I, Alvah F. Hughes
certify that this Corner Record correctly represents work performed by me or under my direction in compliance with the "Corner Recordation Act" (70-22-101, et seq., M.C.A.)

Alvah F. Hughes
Signature of Surveyor & Seal

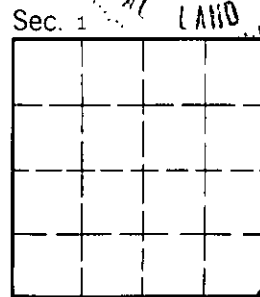
Date: 12/3/92 Reg. No. 7322 LG

Employer: U.S. FOREST SERVICE

Office of Clerk and Recorder, County of Lincoln. This "corner record" was filed for record on 12-14-92 was noted on the cross-index plat and is assigned page No. 5139, in book No. Coral M. Cummings by BB

County Official

E-01 25 N 30 W
Cross Index No. T. R. PMM



• - corner this sheet