

## INSTRUCTIONS

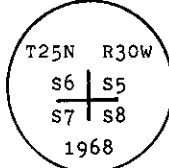
1. Original and/or subsequent record used to evaluate the corner position.
2. Description of evidence found, note discrepancies in the record, state method of establishing lost or obliterated corners.
3. Description of monument and accessories set to perpetuate the corner position.
4. Sketch of corner, show all pertinent data which can best be shown in a sketch example, corner marking, topography ties, position of accessories, etc.
5. Certification must be signed and sealed by Land Surveyor registered in the State of Montana.
6. Fill in Cross Index & Section Diagram at bottom of sheet.

## CERTIFIED CORNER RECORDATION

Corner Sec. Cor. of Secs. 5, 6, 7, & 8 T. 25 N. R. 30 W. P.M.M. Lincoln County

I. 1916 G.L.O. record by S. Frank Walters et al: Set a stone monument and four bearing trees.

1968 B.L.M. remonumentation record by Woodrow E. Damn et al: "The cor. of secs. 5, 6, 7 and 8, monumented with a limestone, 20x7x4 ins., firmly set, mkd. with 5 notches on the E. and S. edges, and witnessed by the remains of the original bearing trees. At the corner point, set an iron post, 30 ins. long, 2 1/2 ins. diam., 24 ins. in the ground, with brass cap mkd.



from which:

The original bearing tree:

- A stump, 18 ins. diam., bears N43 3/4° E, 167 lks. dist., mkd. T25N R30W S5 BT. (Record)
- A larch, 20 ins. diam., bears S12 3/4° E, 304 lks. dist., mkd. T25N R30W S8 BT. (Record)
- A snag, 30 ins. diam., bears N6 3/4° W, 120 lks. dist., mkd. T25N R30W S6 BT. (Record)

The new bearing trees:

- A larch, 5 ins. diam., bears N26 3/4° E, 20 lks. dist., mkd. T25N R30W S5 BT.
- A fir, 6 ins. diam., bears S63° E, 13 lks. dist., mkd. T25N R30W S8 BT.
- A pine, 10 ins. diam., bears S39 1/4° W, 13 lks. dist., mkd. T25N R30W S7 BT.
- A fir, 10 ins. diam., bears N11° W, 34 lks. dist., mkd. T25N R30W S6 BT.

Bury the original stone alongside the iron post."

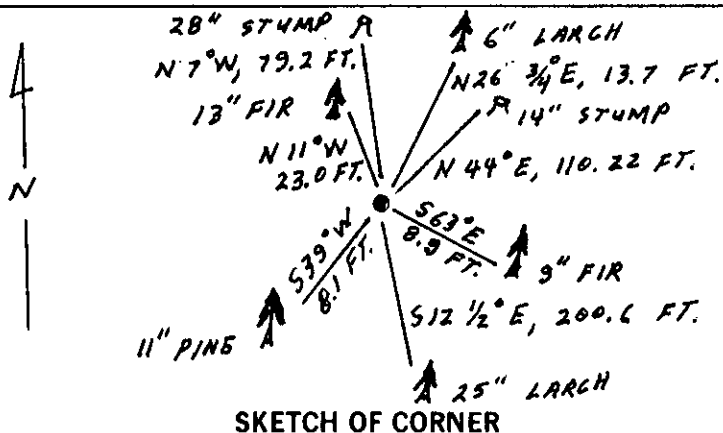
II. Found a 2 1/2 ins. diam. iron pipe, 8 ins. above the ground, with 3 1/4 ins. diam. B.L.M. brass cap, marked as shown above; from which:

- A larch stump, 14 ins. diam., bears N44° E, 110.22 ft. (167 lks.) dist., visible scribe.
- A larch, 25 ins. diam., bears S12 1/2° E, 200.6 ft. (304 lks.) dist., mkd. T25N R30W S8 BT.
- A larch stump, 28 ins. diam., bears N7° W, 79.2 ft. (120 lks.) dist., no visible scribe.
- A larch, 6 ins. diam., bears N26 3/4° E, 13.7 ft. (21 lks.) dist., healed face.
- A fir, 9 ins. diam., bears S63° E, 8.9 ft. (13 lks.) dist., visible scribe.
- A pine, 11 ins. diam., bears S39° W, 8.1 ft. (12 lks.) dist., mkd. T25N R30W S7 BT.
- A fir, 13 ins. diam., bears N11° W, 23.0 ft. (35 lks.) dist., healed face.

III. Set a 6 ft. galvanized steel guard post with Land Survey Marker and Property Boundary decals, West, 3 ft.

Painted red bands around the bearing trees and attached Land Survey Monument and Bearing Tree signs.

Magnetic Declination: 20° East



SKETCH OF CORNER

## CERTIFICATION

I, Thomas M. Hommel

certify the information shown herein is true and correct.

Thomas M. Hommel  
Signature Ground Party Chief

I, Alvah F. Hughes

certify that this Corner Record correctly represents work performed by me or under my direction in compliance with the "Corner Recordation Act" (70-22-101, et seq., M.C.A.)

Alvah F. Hughes  
Signature of Surveyor

Date: 12/3/92 Reg. No. 7323 LS

Employer: U.S. FOREST SERVICE

Office of Clerk and Recorder, County of Lincoln. This "corner record" was filed for record on 12-14-92 was noted on the cross-index plat and is assigned page No. 5138, in book No. Coral M. Cummings by TB

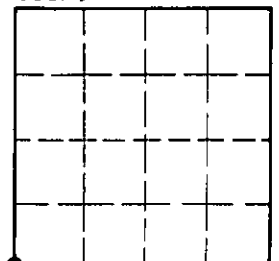
County Official

E-05

25 N 30 W

Cross Index No. \_\_\_\_\_ T. \_\_\_\_\_ R. \_\_\_\_\_ PMM

Sec. 5



• - corner this sheet