

INSTRUCTIONS

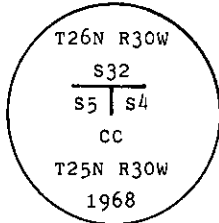
1. Original and/or subsequent record used to evaluate the corner position.
2. Description of evidence found, note discrepancies in the record, state method of establishing lost or obliterated corners.
3. Description of monument and accessories set to perpetuate the corner position.
4. Sketch of corner, show all pertinent data which can best be shown in a sketch example, corner marking, topography ties, position of accessories, etc.
5. Certification must be signed and sealed by Land Surveyor registered in the State of Montana.
6. Fill in Cross Index & Section Diagram at bottom of sheet.

CERTIFIED CORNER RECORDATION

Corner CC of Secs. 4 and 5 T. 25 N. R. 30 W. P.M.M. Lincoln County

I. 1916 G.L.O. record by S. Frank Walters et al: Set a stone monument and mound of stone.

1968 B.L.M. remonumentation record by Woodrow E. Damn et al: "The closing cor. of secs. 4 and 5 of the N. bdy. of the tp., monumented with a limestone, 16x8x4 ins., firmly set, mkd. with 4 notches on the E. and 2 notches on the W. edges and CC on the S. face, and witnessed by a mound of stone S. At corner point; set an iron post, 30 ins. long, 2 1/2 ins. diam., 24 ins. in the ground, with brass cap mkd.



from which:

- A pine, 10 ins. diam., bears $S46^{\circ}E$, 47 lks. dist., mkd. T25N R30W S4 CC BT.
- A pine, 8 ins. diam., bears $S63^{\circ}W$, 9 lks. dist., mkd. T25N R30W S5 CC BT.

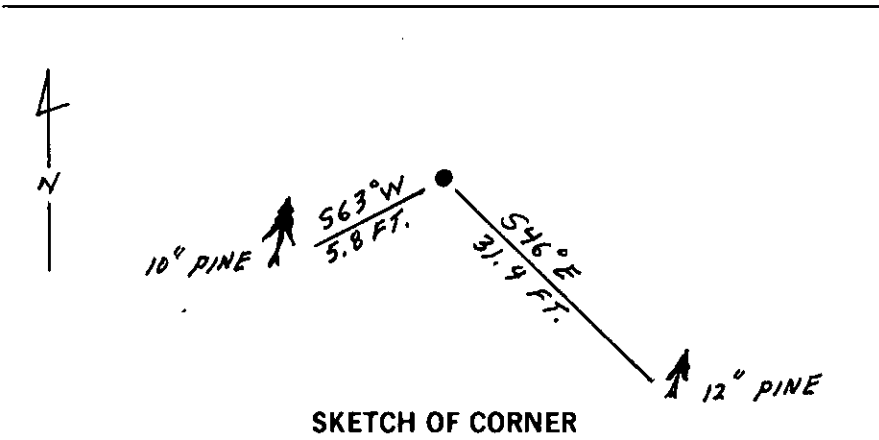
Bury the original stone alongside the iron post."

II. Found a 2 1/2 ins. diam. iron pipe, 6 ins. above the ground, with 3 1/4 ins. diam. B.L.M. brass cap, marked as shown above; from which:

- A lodgepole pine, 12 ins. diam., bears $S46^{\circ}E$, 31.4 ft. (47 lks.) dist., mkd. T25N R30W S4 CC BT.
- A lodgepole pine, 10 ins. diam., bears $S63^{\circ}W$, 5.8 ft. (9 lks.) dist., mkd. T25N R30W S5 CC BT.

III. Painted red bands around the bearing trees and attached Land Survey Monument and Bearing Tree signs.

Magnetic Declination: 20° East



SKETCH OF CORNER

CERTIFICATION

I. Thomas M. Hommel
 certify the information shown herein is true and correct.
Thomas M. Hommel
 Signature Ground Party Chief

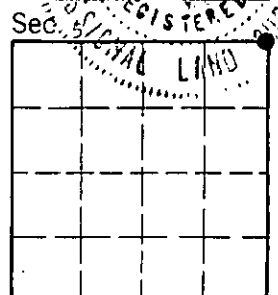
II. Alvah F. Hughes
 certify that this Corner Record correctly represents work performed by me or under my direction in compliance with the "Corner Recordation Act" (70-22-101, et seq., M.C.A.)
Alvah F. Hughes
 Signature of Surveyor

Date: 12/3/92 Reg. No. 7322LS
 Employer: U.S. FOREST SERVICE

Office of Clerk and Recorder, County of Lincoln. This "corner record" was filed for record on 12-14-92 was noted on the cross-index plat and is assigned page No. 5136, in book No. Coral M Cummings by RB

County Official

A-09 25 N 30 W
 Cross Index No. _____ T. _____ R. _____ PMM



• - corner this sheet