

INSTRUCTIONS

Q:CO-STD/152
Created 4/8/92

1. Original and/or subsequent record used to evaluate the corner position.
2. Description of evidence found, note discrepancies in the record, state method of establishing lost or obliterated corners.
3. Description of monument and accessories set to perpetuate the corner position.
4. Sketch of corner, show all pertinent data which can best be shown in a sketch example, corner marking, topography ties, position of accessories.
5. Certification must be signed and sealed by Land Surveyor registered in the State of Montana.
6. Fill in Cross Index & Section Diagram at bottom of sheet.

CERTIFIED CORNER RECORDATION

Corner No. 3 Monarch MS 6185 T. 25 N. R. 30 W. P.M.M. LINCOLN County

RECORD:

MS NO. 6185 Monarch, Robert C. Williams, U.S. Deputy Mineral Surveyor, 1901
Corner No.3

600 N.E. location corner, set a post, 4 1/2 ins. square, 5 ft. long, 2 ft. deep, marked 3-6185, for Cor. No. 3, and raised a mound of stone and earth around post.

A blazed fir tree, 10 ins. diam., marked B.T.3-6185, bears N.22°35'E., 24 ft.

FOUND:

Found no remaining evidence of the original post, mound of stone, or the bearing trees.

TO PERPETUATE:

At record position a hemlock, 10" in diameter is found. We utilize this tree, being in good health and with no visible damage, as the corner monument. Scribe "X" at breast height facing into the claim (Monarch). Blazed and scribed corner tree on two sides, each facing the property lines. The westerly facing blaze is scribed "MS 6185", and the southerly facing blaze is scribed "COR 3 MONARCH".

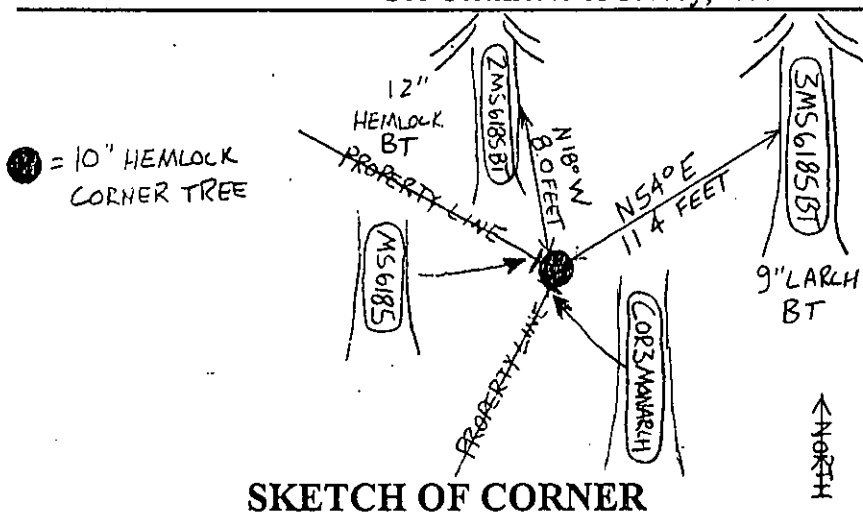
From which new bearing trees:

A larch, 9" in diam., bears N.54°E., 11.4', blazed and scribed "3 MS 6185 BT".

A hemlock, 12" in diam., bears N.18°W., 8.0', blazed and scribed "2 MS 6185 BT".

Place a "Land Survey Monument" (54-9) and "Property Boundary" (54-2) signs on the corner tree. Place a "Land Survey Monument" (54-9), and a "Bearing Tree" (54-3) sign on the bearing trees. Painted all blazes red, and a 6" red band above the "Bearing Tree" signs.

See Certificate of Survey, recorded in Lincoln County



SKETCH OF CORNER

CERTIFICATION

I, Matt Jacobson
certify the information shown herein is true and correct.

Signature Ground Party Chief

I, R.A. Ainsworth
certify that this Corner Record correctly represents work performed by me or under my direction in compliance with the "Corner Recordation Act" (70-22-101, et seq., M.C.A.)

Signature of Surveyor & Seal

Date 11/00 Reg. No. 2923SEmployer: Professional Consultants, Inc.Office of Clerk and Recorder, County of Lincoln. This "corner record" was filed for record on Jan 10, 2001 was noted on the cross-index plat and is assigned page No. 10488, in book No. Coral M. Cummins by RLB

County Official

Sec.17

