

INSTRUCTIONS

Q:CO-STD/152
Created 4/8/92

1. Original and/or subsequent record used to evaluate the corner position.
2. Description of evidence found, note discrepancies in the record, state method of establishing lost or obliterated corners.
3. Description of monument and accessories set to perpetuate the corner position.
4. Sketch of corner, show all pertinent data which can best be shown in a sketch example, corner marking, topography ties, position of accessories.
5. Certification must be signed and sealed by Land Surveyor registered in the State of Montana.
6. Fill in Cross Index & Section Diagram at bottom of sheet.

CERTIFIED CORNER RECORDATION

Corner No. 3 Cariboo MS 6190 T. 25 N. R. 30 W. P.M.M. LINCOLN County

RECORD:

MS No. 6190 Cariboo, Robert C. Williams, U.S. Deputy Mineral Surveyor, 1901

703.7 N.E. location corner. Set a post, 4 1/2 ins. square, 5 ft. long, 2 ft. deep, marked 3-6190, for Cor. No. 3, and raised a mound of earth and stone around post.

A blazed pine tree, 10 ins. diam., marked B.T. 3-6190, bears N.30°W., 21 ft.

FOUND:

Found no remaining evidence of post, mound of stone, or the bearing tree.

TO PERPETUATE:

At record position, set a 5/8" x 24" rebar, with a USFS 3-1/4" aluminum cap 22" in the ground, marked as shown below.

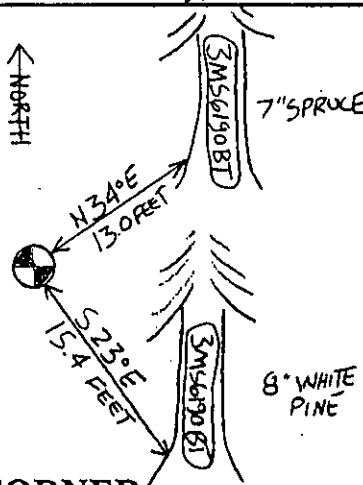
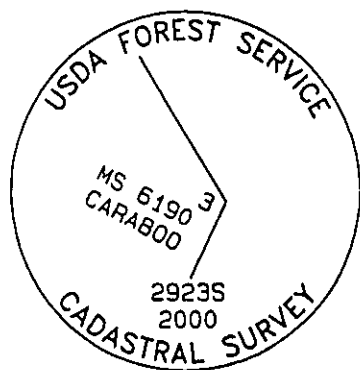
From which new trees:

A spruce, 7" in diam., bears N.34°E., 13.0', blazed and scribed "3 MS 6190 BT".

A white pine, 8" in diam., bears S.23°E., 15.4', blazed and scribed "3 MS 6190 BT".

Place a "Land Survey Monument" (54-9), and a "Bearing Tree" (54-3) sign on the bearing trees. Painted all blazes red, and a 6" red band above the "Bearing Tree" signs. Placed 6' steel posts on property line, 2' +/- from the corner with "Land Survey Marker" (54-9), and "Property Boundary" (54-2) decals.

See Certificate of Survey, recorded in Lincoln County



SKETCH OF CORNER

CERTIFICATION

I, Matt Jacobson
certify the information shown herein is true and correct.

Signature Ground Party Chief

I, R.A. Ainsworth
certify that this Corner Record correctly represents work performed by me or under my direction in compliance with the "Corner Recordation Act" (70-22-101, et seq., M.C.A.)

Signature of Surveyor & Seal

AINS WORTH

Date: 11/00 Reg. No: 2923SEmployer: Professional Consultants, Inc.

SURV. Sec. 8

Office of Clerk and Recorder, County of Lincoln. This "corner record" was filed for record on Jan 10, 2001 was noted on the cross-index plat and is assigned page No. 10487, in book No. Oral M. Cummins & Co

County Official

