

## INSTRUCTIONS

Q:CO-STD/152  
Created 4/8/92

1. Original and/or subsequent record used to evaluate the corner position.
2. Description of evidence found, note discrepancies in the record, state method of establishing lost or obliterated corners.
3. Description of monument and accessories set to perpetuate the corner position.
4. Sketch of corner, show all pertinent data which can best be shown in a sketch example, corner marking, topography ties, position of accessories.
5. Certification must be signed and sealed by Land Surveyor registered in the State of Montana.
6. Fill in Cross Index & Section Diagram at bottom of sheet.

## CERTIFIED CORNER RECORDATION

Corner No. 4 Cariboo MS 6190 T. 25 N. R. 30 W. P.M.M. LINCOLN County

## RECORD:

MS No. 6190 Cariboo, Robert C. Williams, U.S. Deputy Mineral Surveyor, 1901

1500 N.W. location corner, a point in the 2<sup>nd</sup> course of Sur. No. 6189. Set a post, 4 1/2 ins. square, 5 ft. long, 2 ft. deep, marked 4-6190, for Cor. No. 4, and raised a mound of earth and stone around post.

## FOUND:

Found no remaining evidence of post or the mound of stone.

## TO PERPETUATE:

At record position, set a 5/8" x 24" rebar, with a USFS 3-1/4" aluminum cap, 22" in the ground, marked as shown below.

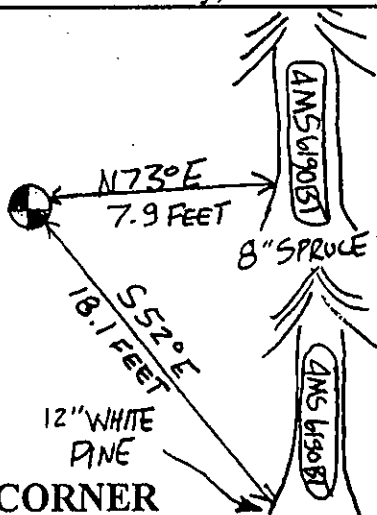
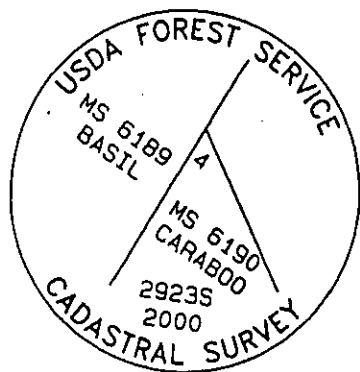
From which new trees:

A spruce, 8" in diam., bears N.73°E., 7.9', blazed and scribed "4 MS 6190 BT".

A white pine, 12" in diam., bears S.52°E., 18.1', blazed and scribed "4 MS 6190 BT".

Place a "Land Survey Monument" (54-9), and a "Bearing Tree" (54-3) sign on the bearing trees. Painted all blazes red, and a 6" red band above the "Bearing Tree" signs. Placed 6' steel posts on property line, 2' +/- from the corner with "Land Survey Marker" (54-9), and "Property Boundary" (54-2) decals.

See Certificate of Survey, recorded in Lincoln County



SKETCH OF CORNER

## CERTIFICATION

I, Matt Jacobson  
certify the information shown herein is true and correct.

Signature Ground Party Chief

I, R.A. Ainsworth  
certify that this Corner Record correctly represents work performed by me or under my direction in compliance with the "Corner Recordation Act" (70-22-101, et seq., M.C.A.)

Signature of Surveyor &amp; Seal

Date: 11/00 Reg. No. 2923SEmployer: Professional Consultants, Inc.Office of Clerk and Recorder, County of Lincoln. This "corner record" was filed for record on Jan 19, 2001 was noted on the cross-index plat and is assigned page No. 10480, in book No. Coral M. Cumming

County Official

