

- INSTRUCTIONS**
1. Original and subsequent record used to evaluate the corner position.
 2. Description of evidence found, note discrepancies in the record, state method of establishing lost or obliterated corners.
 3. Description of monument and accessories set to perpetuate the corner position.
 4. Sketch or corner, show all pertinent data which can best be shown in a sketch example, corner marking, topography lies, position of accessories, etc.
 5. Certification must be signed and sealed by Registered Land Surveyor in State of Montana.
 6. Fill in Cross Index & Section Diagram at bottom of sheet.

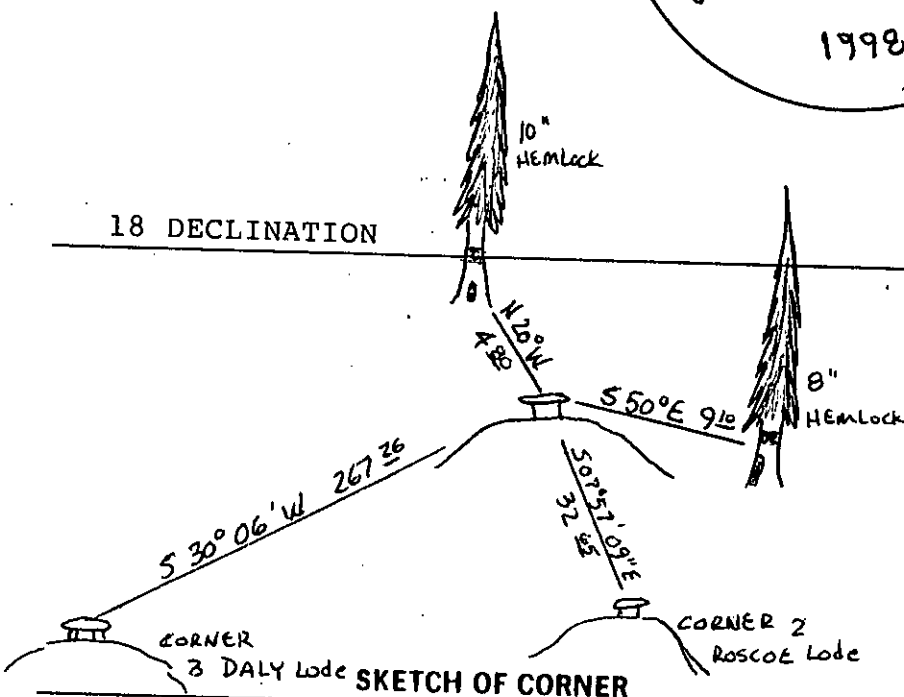
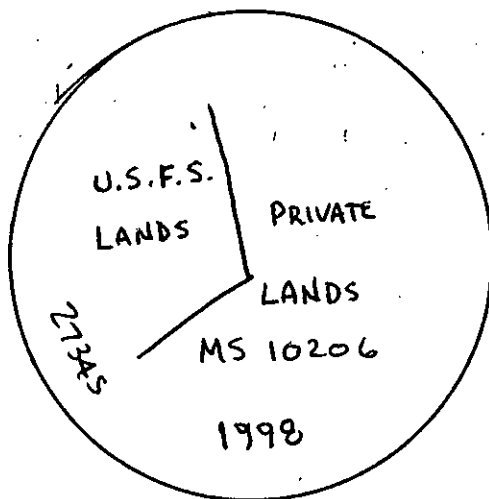
CERTIFIED CORNER RECORDATION

Corner INTERSECTION POINT T. 25n R. 30W P.M.M. LINCOLN County
 LINE 2-3 ROSCOE LODE
 LINE 3-4 DALY LODE

RECORD: NOVEMBER 1918; CORNER 3 DALY; THENCE N29° 52'E 273.0' INTERSECT LINE 2-3 OF THE ROSCOE LODE.
 CORNER 2 ROSCOE; THENCE N08° 06'W 37.70' INTERSECT LINE 3-4 OF THE DALY LODE, NOTHING SET AT THE INTERSECTION POINT.

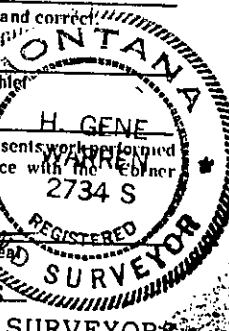
FOUND: NOTHING WAS FOUND AT THIS POSITION.

MAINTENANCE: AT THE INTERSECTION POINT SET A STANDARD 3 1/4 INCH ALUM. CAP ON A 30 INCH LONG PIPE 26 INCHES INTO THE GROUND AND STAMPED AS SHOWN, FROM WHICH;
 A 10 INCH HEMLOCK BEARS N20° W 4.80' AND SCRIBED X BT
 A 8 INCH HEMLOCK BEARS S50° E 9.10' AND SCRIBED X BT.
 CORNER 2 ROSCOE LODE BEARS S07° 57' 09" E 32.65'
 CORNER 3 DALY LODE BEARS S30° 06' W 267.26'
 SET STEEL POSTS ON THE PROPERTY LINES 3 FEET FROM CORNER.
 ATTACHED REQUIRED SIGNS AND PAINT TO BEARING TREES.



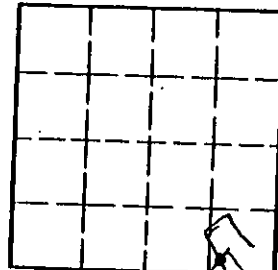
CERTIFICATION

I, DAN CROFT
 certify the information shown herein is true and correct.
 Signature Ground Party Officer
 I, H. GENE WARREN
 certify that this Corner Record correctly represents work performed by me or under my direction in compliance with the "Corner Recordation Act" (70-22-101, et seq., M.C.A.)
 Signature of Surveyor
 Date: 11-30-98 Reg. No. 2734S
 Employer: ROCKY MOUNTAIN SURVEYORS



Office of Clerk and Recorder, County of LINCOLN. This "corner record" was filed for record on the 2nd day of December 1998 was noted on the cross-index plat and is assigned page No. 10278, in book No. _____
Coral M. Cummins, P.E.B.
 County Official

Sec. 16



Cross Index No. N-12 T. 25N R. 30W P.M.M.

• corner this sheet