

CERTIFIED CORNER RECORDATION

Corner 1/4 Cor. |S12 T. 25 N., R. 29 W., P.M.M. Lincoln County

Record :

1916 GLO Survey by S. Walters, C. Dyson and D. MacRae: set a stone and 2 (two) Bearing Trees.

1916 GLO re-survey by C. Dyson and D. MacRae.

1978 BLM remonumentation " The 1/4 sec. cor. of Sec. 12 only, monumented with a limestone, 12x10x5 ins., loosely set 6 ins. in the ground, mkd. 1/4 on the W. face, and witnessed by the original Bearing Trees:

A Larch, 16 ins. diam., bears S 54° E, 37 lks. dist., mkd. 1/4 S12 BT.

A Pine, 16 ins. diam., bears N 58 1/2° W, 41 lks. dist., with a chopped out blaze.

At the corner point set an iron post, 30 ins. long, 2 1/2 ins. diam., 22 ins. In the ground with brass cap, from which a new Bearing Tree:

A Pine, 6 ins. diam., bears N 44° E, 70 lks. dist., mkd. X BT.

Bury the original stone alongside and raise a flat mound of stone, 3 ft. diam. around the iron post.

Found Evidence :

A 2 1/2 inch diam. steel pipe with a 3 1/4 inch diam. brass cap, 12 ins. exposed above collar of stone, marked as shown below, from which:

A White Pine, 18 ins. diam., bears N 58°30' W 24.40 ft. dist. (27.06 ft. 1978 BLM remon. notes), with chopped out face.

A Lodgepole Pine, 8 1/2 ins. diam., bears N 42°30' E, 46.20 ft. dist., with visible scribing.

A Douglas Fir snag, 12 1/2 ins. diam., bears N 59° E, 47.70 ft. dist., with visible scribing. Origin unknown.

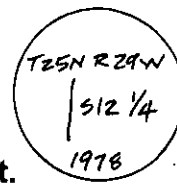
A Larch, 21 ins. diam., bears S 56° E, 27.00 ft. dist. (S 54° E 24.42 ft. 1978 BLM remon. notes), with visible scribing.

Perpetuation :

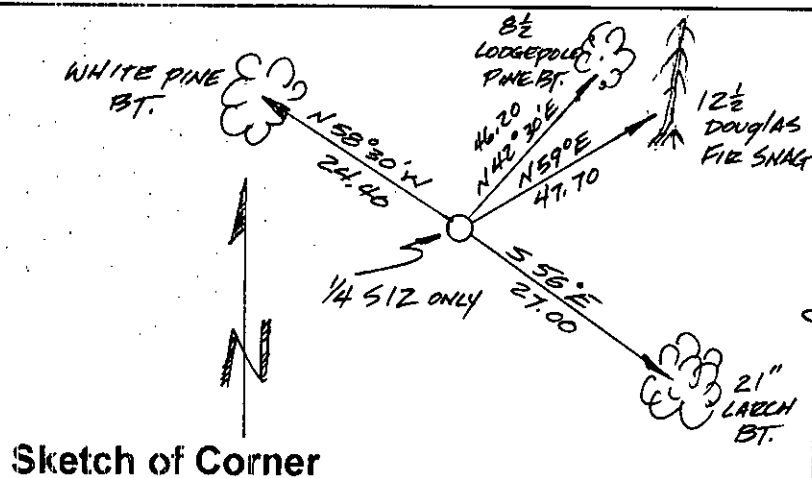
Painted scribed faces red and 6 inch wide bands around all Bearing Trees.

Attached Land Survey Monument signs to all Bearing Trees.

Set a steel post with attached Land Survey Monument decal south 2 foot dist.



Magnetic Declination 18° East



Sketch of Corner

CERTIFICATION

I, John Damon

certify the information shown herein is true and correct

John Damon
Signature of Ground Party Chief

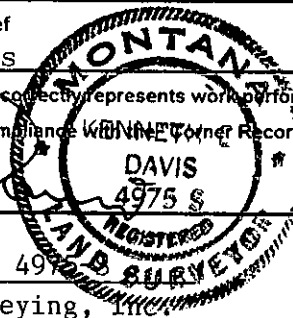
I, Kenneth E. Davis

certify that this Corner Record correctly represents work performed by me or under my direction in compliance with the "Corner Recordation Act" (70-22-101, et seq., M.C.A.)

Signature of Surveyor & Seal

Date: 12/5/97 Reg. No. 4975

Employer: Davis Surveying, Inc.

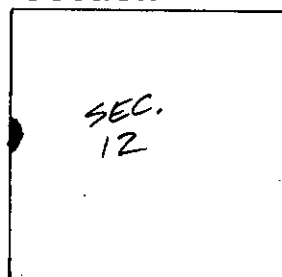


Office of Clerk and Recorder, County of Lincoln

This "corner record" was filed for record on 12-26-97
was noted on the cross-index plat and is assigned page No. 9993
in book No. Coral M. Cumming & RB

County Official

Section



Cross Index No. 1/4 Cor. |S12 T. 25 N., R. 29 W., PMM

• THIS CORNER