

CERTIFIED CORNER RECORDATION

Corner S3
1/4 S10 T. 25 N., R. 29 W., P.M.M. Lincoln County

Record :

1916 GLO record by S.F. Walter, C. Dyson, D. MacRae:
 "Set a slatestone, 16x12x4 ins., 10 ins. in the ground, for 1/4 sec. cor. marked 1/4 on the N. face, from which:
 A tamarack, 18 ins. in diam., bears N. 3 1/2° W., 17 lks. dist. marked 1/4 S3 BT.
 A tamarack, 18 ins. in diam., bears S. 36 1/4° W., 63 lks. dist. marked 1/4 S 10 BT.

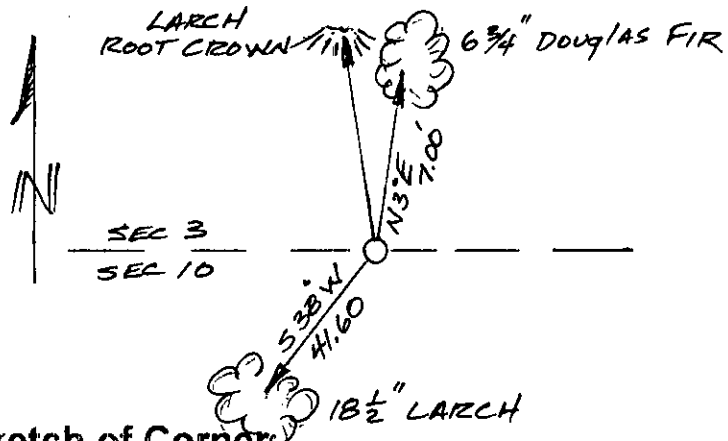
Found Evidence :

A slatestone 12x4 ins., 6 ins. exposed above ground, firmly set, marked 1/4 on the N. face, from which:
 A Larch, 18 1/2 ins. diam., bears S. 38° W., 41.60 feet dist., with visible scribing.
 A well rotted Larch root crown bears N. 2° W., 11.30 feet dist.

Perpetuation :

At the position of the found stone, set a 2 1/2 inch diam. x 30 inch long alum. pipe, 27 ins. in the ground, with a 3 1/4 inch diam. alum. cap marked as shown below. Buried the original stone alongside the alum. monument, from which:
 A Douglas Fir, 6 3/4 ins. diam., bears N. 3° E., 7.00 feet dist., scribed (1/4 S3 BT).
 Painted 6 inch wide red bands around both Bearing Trees and painted scribed faces red.
 Attached Bearing Tree signs and Land Survey Monument signs to both trees.
 Set a steel post with Property Line and Land Survey Monument stickers west on line, 2.00 feet dist.

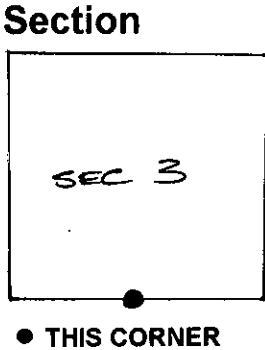
Magnetic Declination: 18° East



CERTIFICATION
 I, John Damon
 certify the information shown herein is true and correct
John Damon
 Signature of Ground Party Chief
 I, Ken E. Davis
 certify that this Corner Record correctly represents work performed by me or under my direction in compliance with the "Corner Recordation Act" (70-22-101, et seq., M.C.A.)
Ken E. Davis
 Signature of Surveyor & Seal
 Date: 4/5/97 Reg. No. 4975-S
 Employer: Davis Surveying, Inc.

Sketch of Corner

Office of Clerk and Recorder, County of Lincoln
 This "corner record" was filed for record on 12-26-97
 was noted on the cross-index plat and is assigned page No. 9992
 in book No. Coal M. Cumming
 County Official Debb



Cross Index No. S3
1/4 S10 T. 25 N., R. 29 W., PMM