

# CERTIFIED CORNER RECORDATION

Corner S 1/16 Cor. T. 25 N., R. 29 W., P.M.M. Lincoln County

## Record :

No other monuments set as of record.

## Found Evidence :

No monuments were found during field search of area.

## Perpetuation :

The S 1/16 Corner for Section 12, T. 25 N., R. 29 W., only, was set by computed location from a mid-split between the section corner for Sections 12 and 13 only, and the 1/4 corner for Section 12 only.

At the computed location, set a 5/8 inch diam. alum. rod 30 ins. long, 26 ins. in the ground, with a 3 1/4 inch diam. alum. cap marked as shown below, from which:

A Grand Fir, 4 3/4 ins. diam., bears N 50° E., 8.10 ft. dist., scribed (S 1/16 S12 BT).

A Grand Fir, 7 3/4 ins. diam., bears S 48° E., 18.40 ft. dist., scribed (S 1/16 S12 BT).

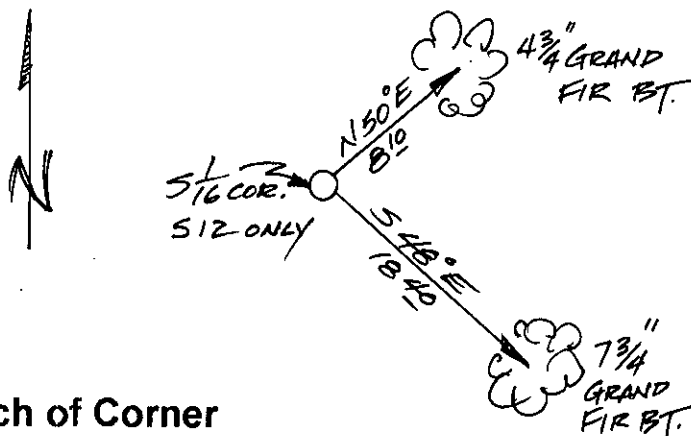
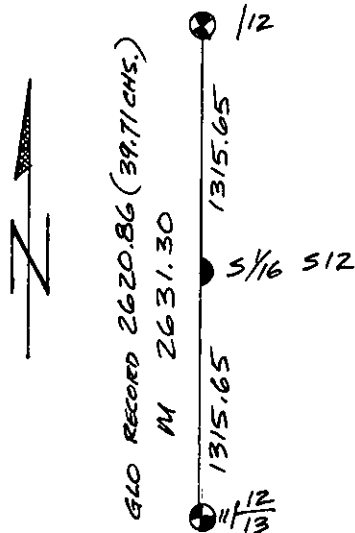
Painted scribed faces red and 6 inch wide red bands around both trees.

Attached Bearing Tree signs and Land Survey Monument signs to both Bearing Trees.

Set a steel post with attached Property and Land Survey Monument stickers south 1 foot.



Magnetic Declination: 18° East



Sketch of Corner

## CERTIFICATION

I, John Damon

certify the information shown herein is true and correct

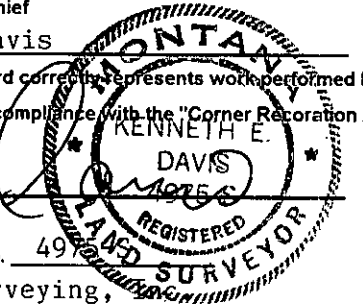
John Damon  
Signature of Ground Party Chief

I, Kenneth E. Davis

certify that this Corner Record correctly represents work performed by me or under my direction in compliance with the "Corner Restoration Act" (70-22-101, et seq., M.C.A.)

Kenneth E. Davis  
Signature of Surveyor & Seal

Date: 12/5/97 Reg. No. 49  
Employer: Davis Surveying,

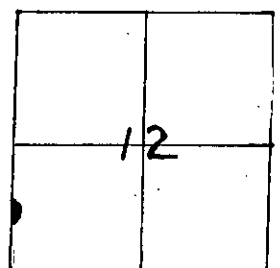


Office of Clerk and Recorder, County of Lincoln

This "corner record" was filed for record on 12-26-97  
was noted on the cross-index plat and is assigned page No. 9900  
in book No. Cora M. Lumley, R. 29 W.

County Official

## Section



Cross Index No. S 1/16 Cor. T. 25 N., R. 29 W., PMM

• THIS CORNER