

# CERTIFIED CORNER RECORDATION

Corner 1/4 Cor. S11 T. 25 N., R. 29 W., P.M.M. Lincoln County

## Record :

1916 GLO Survey by S. Walters, C. Dyson and D. MacRae: set a stone and 2 (two) Bearing Trees.

1916 GLO Survey by C. Dyson and D. MacRae.

1978 BLM remonumentation: "The 1/4 sec. cor. of sec. 11, only, monumented with a sandstone, 12x10x5 ins., firmly set 8 ins. in the ground, mkd. 1/4 on the W. face, and witnessed by the remains of the original bearing trees:

A Fir snag, 18 ins. diam., bears S 50 1/2° W., 22 lks. dist., mkd. 1/4 S11 BT (Record: 122 lks.)  
A Larch 16 ins. diam., bears N 65° W, 116 lks. dist., mkd. 1/4 S11 BT.

At the corner point, set a iron post, 30 ins. long, 2 1/2 ins. diam., 22 ins. in the ground, with brass cap from which a new bearing tree:

A Pine 6 ins. diam., bears S 49° W, 30 lks. dist., mkd. X BT.

Bury the original stone alongside and raise a flat mound of stone, 2 1/2 ft. diam. around the iron post."

## Found Evidence :

A 2 1/2 inch diam. steel pipe with a 3 1/4 inch diam. brass cap, 6 ins. exposed above the ground, marked as shown below, with a collar of stone, from which:

A Lodgepole Pine 7 3/4 ins. diam., bears S 49° W, 19.80 ft. dist., with visible scribing.  
A Douglas Fir snag, 16 1/2 ins. diam., bears S 50°30' W, 14.52 ft. dist., with visible scribing.  
A Larch, 17 1/2 ins. diam., bears N 65° W, 76.56 feet dist., with overgrown face.

## Perpetuation :

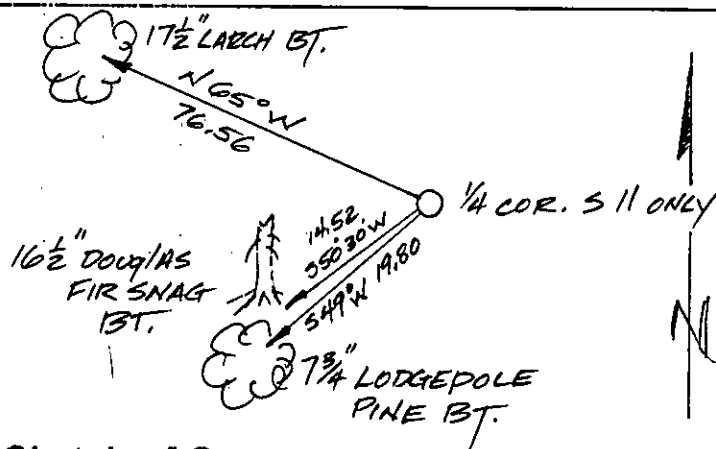
Painted scribed faces red and 6 inch wide bands around both Bearing Trees.

Attached Land Survey Monument signs to all Bearing Trees.

Set a steel post with attached Land Survey Monument decal south 2 foot dist.



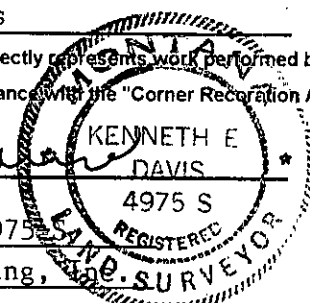
Magnetic Declination: 18° East



Sketch of Corner

## CERTIFICATION

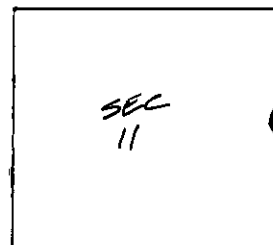
I, John Damon  
certify the information shown herein is true and correct  
Signature of Ground Party Chief  
I, Kenneth E. Davis  
certify that this Corner Record correctly represents work performed by me or under my direction in compliance with the "Corner Recordation Act" (70-22-101, et seq., M.C.A.)  
Signature of Surveyor & Seal  
Date: 11/5/97 Reg. No. 4975 S  
Employer: Davis Surveying, Inc.



## Section

Office of Clerk and Recorder, County of Lincoln  
This "corner record" was filed for record on 12-26-97  
was noted on the cross-index plat and is assigned page No. 9989  
in book No. Coral M. Cunningham By AUB

County Official



Cross Index No. 1/4 Cor. S11 T. 25 N., R. 29 W., PMM • THIS CORNER