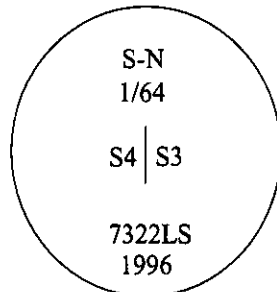


CERTIFIED CORNER RECORDATION

Corner S-N 1/64 Sec. 3&4 T. 25N R. 29 W P.M., MT Lincoln County

- I. No previous history.
- II. No evidence found.
- III. At the position determined by survey, set a 30 in. long, 3/4 in. diam. alum. rod, 28 ins. in the ground, with a 3 1/4 in. diam. alum. cap mkd. as shown:

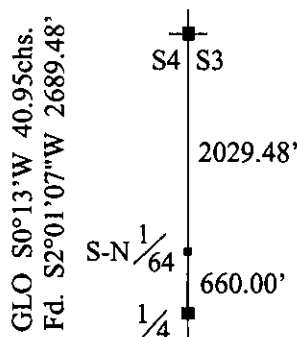


From which:

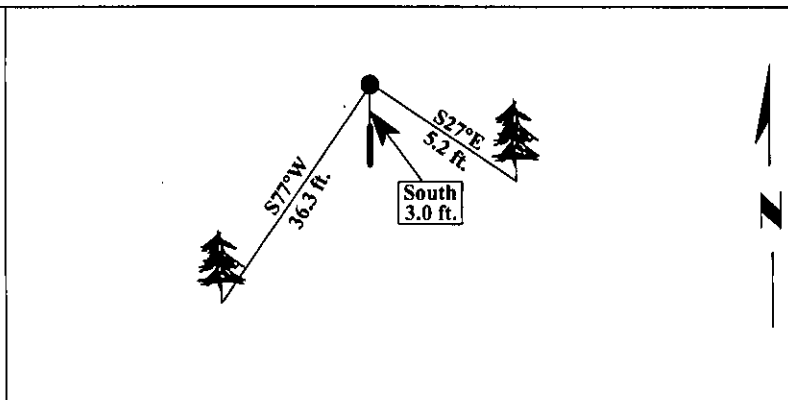
- A Larch, 9 ins. diam., bears S27°E, 5.2 ft. dist., mkd. "S-N 1/64 S3 BT".
- A Larch, 6 ins. diam., bears S77°W, 36.3 ft. dist., mkd. "X BT".

Painted bearing trees and attached Land Survey Monument and Bearing Tree signs.

Set a 6 ft. steel guard post, 3 ft. South, with Land Survey Monument and Property Boundary decals.



Magnetic Declination: 20° East



SKETCH OF CORNER

CERTIFICATION	
I, Mark Federman	certify the information shown herein is true and correct.
<i>Mark Federman</i>	
I, Alvah F. Hughes	certify that this Corner Record correctly represents work performed by me or under direction in compliance with the "Corner Recordation Act" (70-22-101, et seq., M.C.A.)
<i>Alvah F. Hughes</i>	
Date: 12/17/96	Signature of Surveyor & Recorder
Reg. No.: 7322LS	7322 LS
Employer: U.S. FOREST SERVICE	REGISTERED

Office of Clerk and Recorder, County of **LINCOLN**. This "corner record" was filed for record on **FEB 3, 1997** and was noted on the cross-index plat and is assigned page No. **9113** in book No. **CORAL M. CUMMINGS**

County Official *By OLB*

