

INSTRUCTIONS

1. Original and/or subsequent record used to evaluate the corner position.
2. Description of evidence found, note discrepancies in the record, state method of establishing lost or obliterated corners.
3. Description of monument and accessories set to perpetuate the corner position.
4. Sketch of corner, show all pertinent data which can best be shown in a sketch example, corner marking, topography ties, position of accessories, etc.
5. Certification must be signed and sealed by Land Surveyor registered in the State of Montana.
6. Fill in Cross Index & Section Diagram at bottom of sheet.

**CERTIFIED CORNER RECORDATION**

Corner NE Sec. Cor. of S14 T. 25 N. R. 29 W. Lincoln County

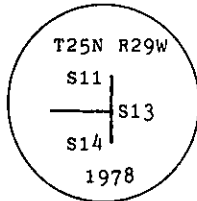
I. 1916 G.L.O. record by S. Walters et al: Set a stone and two bearing trees.

1978 BLM remonumentation : The cor. of sec. 11 and 14 only, monumented with a limestone, 12x10x6 ins., firmly set 8 ins. in the ground, mkd. with 1 notch on the E and 4 notches on the S edges, and witnessed by the remains of the original bearing trees:

A pine, 26 ins. diam., bears S9 1/2° W, 117 lks. (77.22 ft.) dist., with 29W S14 B visible on partially overgrown blaze.

A fir stump, 24 ins. diam., bears N54 1/2° W, 130 lks. (85.80 ft.) dist., mkd. T25N R29W S11 BT.

At the corner point, set an iron post, 30 ins. long, 2 1/2 ins. diam., 22 ins. in the ground, with brass cap mkd.



from which a new bearing tree:

A pine, 8 ins. diam., bears N50° W, 47 lks. (31.02 ft.) dist., mkd. T25N R29W S11 BT.

Bury the original stone alongside and raise a flat mound of stone, 2 ft. diam., around the iron post.

II. Found a 2 1/2 ins. diam. pipe, 12 ins. above the ground, with BLM brass cap mkd. as shown, from which

A ponderosa pine, 28 ins. diam., bears S11° W, 78.4 ft. dist., visible scribing. (Original)

A lodgepole pine, 10 ins. diam., bears N50° W, 31.3 ft. dist., visible scribing.

A rotten stump, bears N54° W, 85.5 ft. dist., visible scribing. (Original)

III. Painted red bands around the bearing trees and attached Land Survey Monument and Bearing Tree signs.

Set a 6 ft. galvanized steel guard post with Land Survey Marker and Property Boundary decals, South, 3 ft.

Magnetic Declination: 20° East

CERTIFICATION

I, Kevin A. Todd  
certify the information shown herein is true and correct.

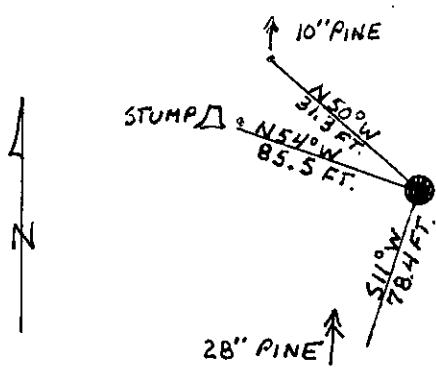
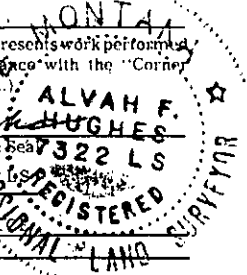
Kevin A. Todd  
Signature Ground Party Chief

I, Alvah F. Hughes  
certify that this Corner Record correctly represents work performed by me or under my direction in compliance with the "Corner Recordation Act" (70-22-101, et seq., M.C.A.).

Alvah F. Hughes  
Signature of Surveyor & Seal

Date: 1/8/91 Reg. No. 7322 LS

Employer: U.S. FOREST SERVICE



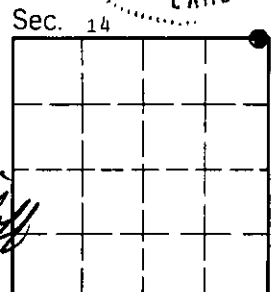
SKETCH OF CORNER

Office of Clerk and Recorder, County of Lincoln. This "corner

record" was filed for record on 1-10-91

was noted on the cross-index plat and is assigned page No. 4484, in

book No. \_\_\_\_\_ Coral M. Cummings by Bill Beckhoff  
County Official



J-21 25 N 29 W  
Cross Index No. \_\_\_\_\_ T. \_\_\_\_\_ R. \_\_\_\_\_ PMM

• - corner this sheet