

INSTRUCTIONS

1. Original and/or subsequent record used to evaluate the corner position.
2. Description of evidence found, note discrepancies in the record, state method of establishing lost or obliterated corners.
3. Description of monument and accessories set to perpetuate the corner position.
4. Sketch of corner, show all pertinent data which can best be shown in a sketch example, corner marking, topography ties, position of accessories, etc.
5. Certification must be signed and sealed by Land Surveyor registered in the State of Montana.
6. Fill in Cross Index & Section Diagram at bottom of sheet.

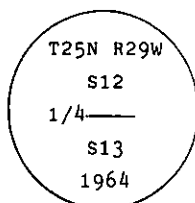
CERTIFIED CORNER RECORDATION

Corner S. 1/4 of S12 T. 25 N. R. 29 W. P.M.M. Lincoln County

I. 1903 G.L.O. record by C. Albee et al: Set a stone and two bearing trees.

1964 BLM remonumentation : The 1/4 sec. cor. of secs. 12 and 13, as determined from the original bearing trees.

At the corner point, set an iron post, 30 ins. long, 2 1/2 ins. diam., 27 ins. in the ground, with brass cap mkd.



from which the original trees:

A fir, 14 ins. diam., bears N14 1/2° E, 9 lks. (5.94 ft.) dist., mkd. 1/4 S12 BT. (Record)

A fir, 16 ins. diam., bears S34° E, 15 lks. (9.90 ft.) dist., with an overgrown blaze. (Record)

II. Found a 2 1/2 ins. diam. pipe, 6 ins. out of the ground, with BLM brass cap mkd. as shown, from which

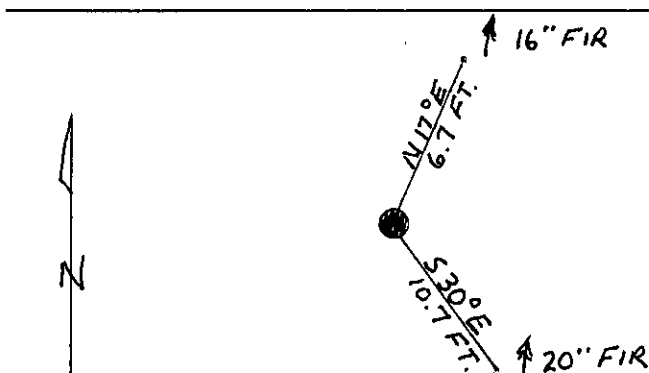
A fir, 16 ins. diam., bears N17° E, 6.7 ft. dist., visible scribing.

A fir, 20 ins. diam., bears S30° E, 10.7 ft. dist., overgrown blaze.

III. Painted red bands around the bearing trees and attached Land Survey Monument and Bearing Tree signs.

Set a 6 ft. galvanized steel guard post with Land Survey Marker and Property Boundary decals, East, 3 ft.

Magnetic Declination: 20° East



SKETCH OF CORNER

CERTIFICATION

I, Kevin A. Todd
certify the information shown herein is true and correct.

Kevin A. Todd
Signature Ground Party Chief

I, Alvah F. Hughes
certify that this Corner Record correctly represents work performed by me or under my direction in compliance with the Montana
Recordation Act" (70-22-101, et seq., M.C.A.)

Alvah F. Hughes
Signature of Surveyor & Seal

Date: 1/8/91 Reg. No. 7322 LS

Employer: U.S. FOREST SERVICE

Office of Clerk and Recorder, County of Lincoln. This "corner

record" was filed for record on 1-10-91

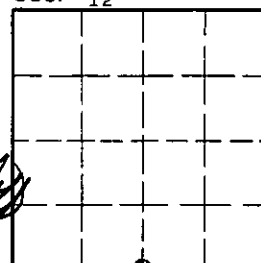
was noted on the cross-index plat and is assigned page No. 4480, in

book No. Coral Cummings by Bill Buckhoff

County Official

J-23 25 N 29 W
Cross Index No. T. R. PMM

Sec. 12



• - corner this sheet