

INSTRUCTIONS

1. Original and/or subsequent record used to evaluate the corner position.
2. Description of evidence found, note discrepancies in the record, state method of establishing lost or obliterated corners.
3. Description of monument and accessories set to perpetuate the corner position.
4. Sketch of corner, show all pertinent data which can best be shown in a sketch example, corner marking, topography ties, position of accessories, etc.
5. Certification must be signed and sealed by Land Surveyor registered in the State of Montana.
6. Fill in Cross Index & Section Diagram at bottom of sheet.

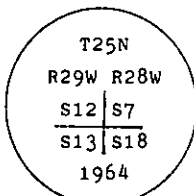
CERTIFIED CORNER RECORDATION

Corner SE Sec. Cor. of S12 T. 25 N. R. 29 W. P.M.M. Lincoln County

- I. 1903 G.L.O. record by C. Albee et al: Set a stone and four bearing trees.

1964 BLM remonumentation: The cor. of secs. 7, 12, 13 and 18, on the E. body of the Tp., monumented with a limestone, 16x10x5 ins., loosely set and mkd. with 2 grooves on the N and 4 grooves on the S faces, and witnessed by the original bearing trees.

At the corner point, set an iron post, 30 ins. long, 2 1/2 ins. diam., 27 ins. in the ground, with brass cap mkd.



From which the original bearing trees:

A fir, 16 ins. diam., bears N47° E, 57 lks. (37.62 ft.) dist., with an overgrown blaze.
(Record: N47° 05' E, 57 lks.)

A pine, 14 ins. diam., bears S49 3/4° E, 78 lks. (51.48 ft.) dist., mkd. T25N R28W S18 BT. (Record)

A pine, 34 ins. diam., bears S86° W, 165 lks. (108.90 ft.) dist., mkd. T25N R29W S13 BT. (Record)

A pine, 36 ins. diam., bears N77° W, 126 lks. (83.16 ft.) dist., mkd. T25N R29W S12 BT.
(Record: N82° 10' W, 126 lks.)

Bury the original stone alongside of the iron post.

- II. Found a 2 1/2 ins. diam. pipe, 6 ins. out of the ground, with BLM brass cap mkd. as shown, from which

A fir, 18 ins. diam., bears N50° E, 38.9 ft. dist., overgrown blaze.

A ponderosa pine, 16 ins. diam., bears S50° E, 52.0 ft. dist., visible scribing.

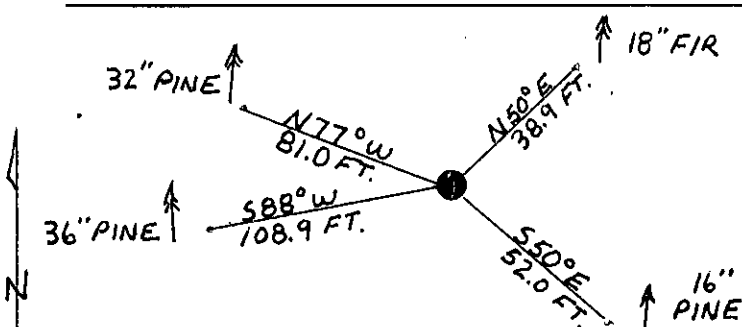
A ponderosa pine, 36 ins. diam., bears S88° W, 108.9 ft. dist., visible scribing.

A ponderosa pine, 32 ins. diam., bears N77° W, 81.0 ft. dist., visible scribing.

- III. Painted red bands around the bearing trees and attached Land Survey Monument and Bearing Tree signs.

Set a 6 ft. galvanized steel guard post with Land Survey Marker and Property Boundary decals, South, 3 ft.

Magnetic Declination: 20° East



SKETCH OF CORNER

CERTIFICATION

1. Kevin A. Todd
certify the information shown herein is true and correct.

Kevin A. Todd
Signature Ground Party Chief

1. Alvah F. Hughes
certify that this Corner Record correctly represents work performed by me or under my direction in compliance with the "Corner Recordation Act" (70-22-101, et seq., M.C.A.)

Alvah F. Hughes
Signature of Surveyor

Date: 1/8/91 Reg. No. 7322

Employer: U.S. FOREST SERVICE

Office of Clerk and Recorder, County of Lincoln. This "corner

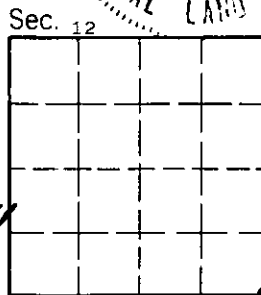
record" was filed for record on 1-10-91

was noted on the cross-index plat and is assigned page No. 4479, in

book No. _____

Coral McCummings by Bill Buckoff
County Official

J-25 25 N 29 W
Cross Index No. _____ T. _____ R. _____ PMM



• - corner this sheet