

INSTRUCTIONS

1. Original and/or subsequent record used to evaluate the corner position.
2. Description of evidence found, note discrepancies in the record, state method of establishing lost or obliterated corners.
3. Description of monument and accessories set to perpetuate the corner position.
4. Sketch of corner, show all pertinent data which can best be shown in a sketch example, corner marking, topography ties, position of accessories, etc.
5. Certification must be signed and sealed by Registered Land Surveyor in State of Montana.
6. Fill in Cross Index & Section Diagram at bottom of sheet.

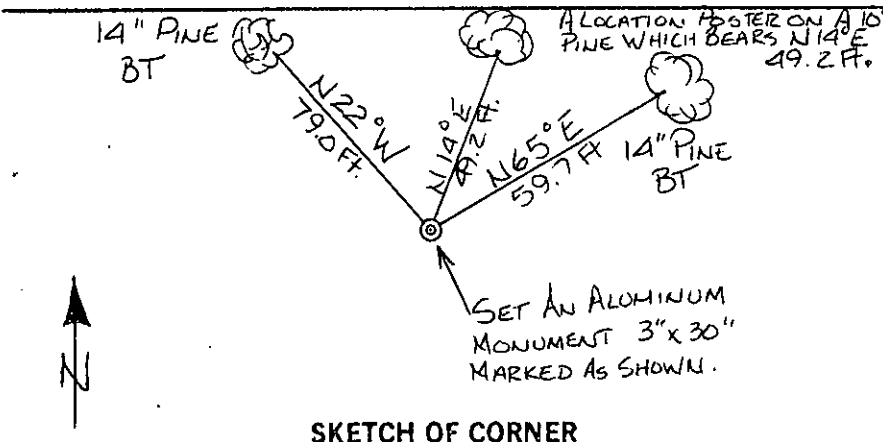
CERTIFIED CORNER RECORDATION

Corner N 1/16 Corner Sec. 2 T. 25N R. 29W P.M.M. Lincoln County

1. This corner not previously set.
2. Set: A 3" X 30" aluminum capped monument marked as shown below from which,
  - A 14" Pine bears N 22°W 79.0 feet scribed N 1/16 S3B.T. and posted.
  - A 14" Pine bears N 65°E 59.7 feet scribed N 1/16 S2B.T. and posted.
  - A location poster on a 10" Pine bears N 14°E 49.2 feet.
 Painted monuments and accessories with bright red paint.



Set 3" aluminum monument marked as shown.



CERTIFICATION

Walt Gibbons  
 certify the information shown herein is true and correct.  
*Walt Gibbons*  
 Signature Ground Party Chief

Jack H. Ninneman  
 certify that this Corner Record correctly represents work performed by me or under by direction in compliance with the "Corner Recordation Act" (70-22-101, et seq., M.D.A.)  
*Jack H. Ninneman*  
 Signature of Surveyor & Seal

Date: Aug. '82 Reg. No. 4661S

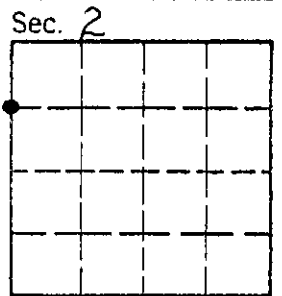
Employer: Ninneman Engineering Inc.

SKETCH OF CORNER

Office of Clerk and Recorder, County of LINCOLN. This "corner record" was filed for record on the SEPT 10. day of 1982 was noted on the cross-index plat and is assigned page No. 1892, in book No. \_\_\_\_\_

Eleanor L. Vaughn by Betty L. Conner  
 County Official *deputy*

Cross Index No. B-17 T. 25N R. 29W P.M.M.



• corner this sheet