

INSTRUCTIONS

1. Original and/or subsequent record used to evaluate the corner position.
2. Description of evidence found, note discrepancies in the record, state method of establishing lost or obliterated corners.
3. Description of monument and accessories set to perpetuate the corner position.
4. Sketch of corner, show all pertinent data which can best be shown in a sketch example, corner marking, topography ties, position of accessories, etc.
5. Certification must be signed and sealed by Registered Land Surveyor in State of Montana.
6. Fill in Cross Index & Section Diagram at bottom of sheet.

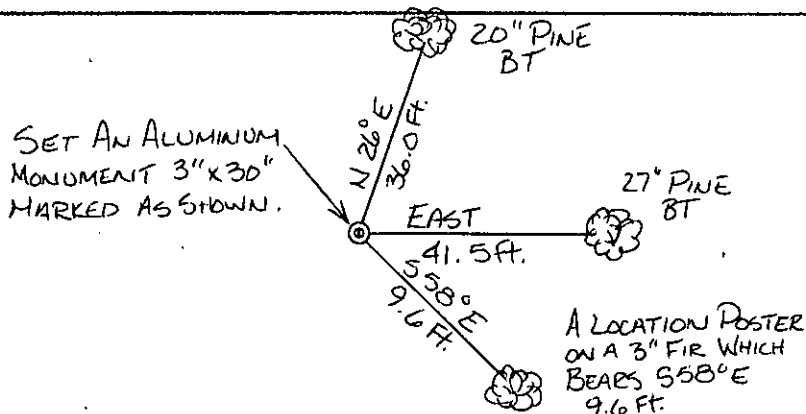
CERTIFIED CORNER RECORDATION

Corner CN 1/16 Corner Sec. 2 T. 25N R. 29W P.M.M. Lincoln County

1. This corner not previously set.
2. Set: A 3" X 30" aluminum capped monument marked as shown below from which,
A 20" Pine bears N 26°E 36.0 feet scribed CN 1/16S2 B.T. and posted.
A 27" Pine bears East 41.5 feet scribed CN 1/16S2B.T. and posted.
A location poster on a 3" Fir bears S 58°E 9.6 feet.
Painted monument and accessories with bright red paint.



Set 3" aluminum monument marked as shown.



SKETCH OF CORNER

CERTIFICATION

I, Walt Gibbons
certify the information shown herein is true and correct.

Walt Gibbons
Signature Ground Party Chief

I, Jack H. Ninneman
certify that this Corner Record correctly represents work performed
by me or under my direction in compliance with the "Corner
Recordation Act" (70-22-101, et seq., M.D.A.)

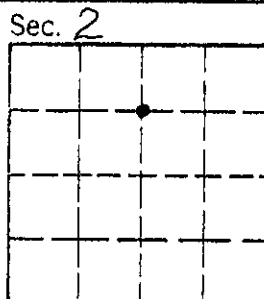
Jack H. Ninneman
Signature of Surveyor & Seal

Date Aug. '82 Reg. No. 4661S

Employer: Ninneman Engineering Inc.

Office of Clerk and Recorder, County of LINCOLN. This "corner
record" was filed for record on the SEPT. 10 day of 1982
was noted on the cross-index plat and is assigned page No. 1891, in
book No. _____
Eleanor L. Vaughan by Betty L. Conces
County Official deputy

Cross Index No. B-19 T. 25N R. 29W P.M.M.



• corner this sheet