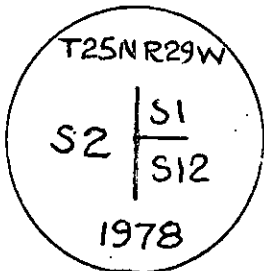


2. Description of corner and, note corner parties in the record, state method of establishment of corner.
3. Description of monument and accessories set to perpetuate the corner position.
4. Sketch of corner, show all pertinent data which can best be shown in a sketch example, corner marking, topography ties, position of accessories, etc.
5. Certification must be signed and sealed by Registered Land Surveyor in State of Montana.
6. Fill in Cross Index & Section Diagram at bottom of sheet.

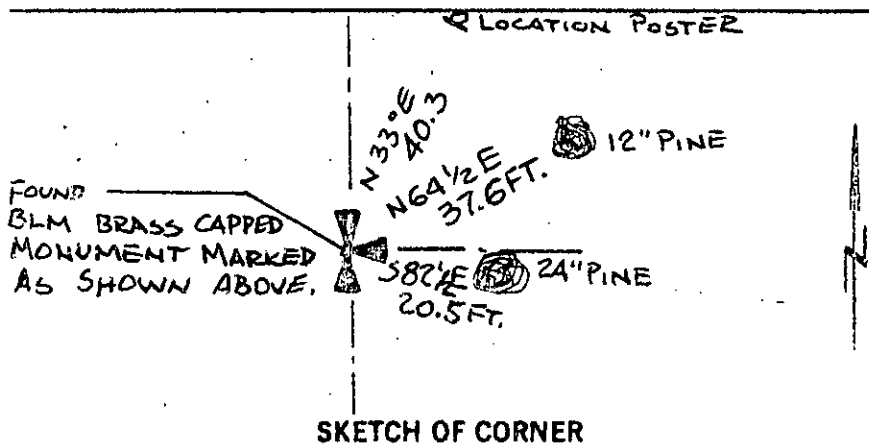
CERTIFIED CORNER RECORDATION

Corner NW Corner Section 12 T. 25N R. 29W P.M.M. Lincoln County

1. 79.55 chains (resurvey): Found the old corner for Sections 1, 2, 11 and 12, which is a Limestone 12 X 10 X 6 inches above ground, firmly set, marked and witnessed as described by the Surveyor General. Hereafter this corner will refer to Sections 1 and 12 only. I therefore obliterate the bearing trees on the West side. A Pine 8 inches diameter bears N 64°30'E 57 links distance, marked T25N., R. 29W S 1 B.T. A Pine, 13 inches, diameter, bears S 82°30'E 31 links marked T25N., R29W S 12 B.T.
2. Found: BLM brass capped monument (marked as shown) from which a 12" Pine, bears N 64½°E 37.6 feet scribed T25N., R29W, S 1 B.T. A 24" Pine bears, S 82½°E, 20.5 feet, scribed, but mostly overgrown. A location Poster bears N 33°E 40.3 feet. A mound of stone around corner monument.
3. Painted monument and accessories with bright red paint.



Found BLM brass capped monument marked as shown.



CERTIFICATION	
1. <u>Jack H. Ninneman</u>	
certify the information shown herein is true and correct.	
<u>Jack H. Ninneman</u>	Signature Ground Party Chief
1. <u>Jack H. Ninneman</u>	
certify that this Corner Record correctly represents work performed by me or under by direction in compliance with the "Corner Recordation Act" (70-22-101, et seq., M.D.A.)	
<u>Jack H. Ninneman</u>	Signature of Surveyor & Seal
Date: <u>9/4/81</u>	Reg. No. <u>4661S</u>
Employer: <u>Ninneman Engineering Inc.</u>	

Office of Clerk and Recorder, County of Lincoln. This "corner record" was filed for record on the December 7th day of 1981, was noted on the cross-index plat and is assigned page No. 1417, in book No. 1

Eleanor L. Vaughn by Betty L. Conner
County Official Deputy

Cross Index No. E-21 T. 25N R. 29W P.M.M.

Sec. 12

• - corner this sheet