

CERTIFIED CORNER RECORDATION

Corner N E Sec. Cor. S31 T. 25 N., R. 29 W., P.M.M. Lincoln County

Record :

1916 original GLO notes by S. Frank Walters.

"Set a sandstone, 14 x12 x 8 ins., 9 ins. in the ground, for cor. of secs. 29, 30, 31 and 32, marked with 5 notches on the E. and 1 notch on the S. edges, from which

A fir, 18 ins. in diam., bears N. 24 1/2° E., 215 lks. dist., marked T 25 N R 29 W S 29 B T.

A fir, 6 ins. in diam., bears S. 25 1/2° E. 56 lks. dist., marked T 25 N R 29 W S 32 B T.

A fir, 14 ins. in diam., bears S. 38 1/2° W., 65 lks. dist., marked T 25 N R 29 W S 31 B T.

A fir, 12 ins. in diam., bears N. 23 1/2° W., 189 lks. dist., marked T 25 N R 29 W S 30 B T.

Found Evidence :

Found original stone. Bearing Tree's down for Secs. 29, 30 and 32.

Perpetuation :

Established four (4) new Bearing Tree, from which:

A douglas fir, 19 ins. in diam., bears N. 64° W., 28.3 ft. dist., for Sec. 30.

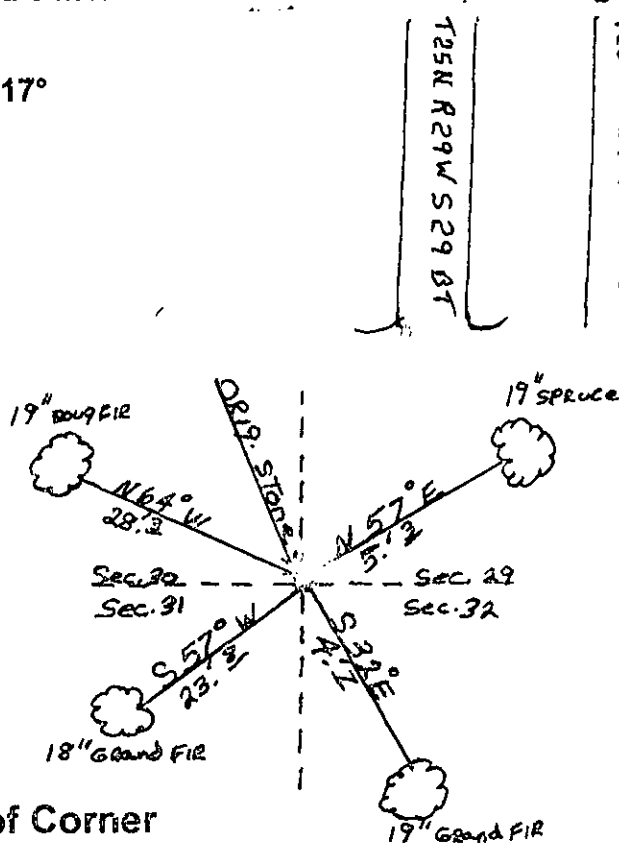
A grand fir, 18 ins. in diam., bears S. 57° W., 23.8 ft. dist., for Sec. 31.

A grand fir, 19 ins. in diam., bears S. 32° E., 4.7 ft. dist., for Sec. 32.

A spruce, 19 ins. in diam., bears N. 57° E., 5.3 ft. dist., for Sec. 29.

Painted 6 inch wide red bands around Bearing Tree with Bearing tree signs attached.

Declination: 17°



Sketch of Corner

CERTIFICATION

I, Rick Shaver

certify the information shown herein is true and correct

Rick Shaver
Signature of Ground Party Chief

I, Ken E. Davis

certify that this Corner Record correctly represents work performed by me or under my direct supervision in compliance with the "Corner Recordation" Act.

Ken E. Davis
Signature of Surveyor & Seal
Date: 2/28/2000
Employer: Davis Surveying, Inc.

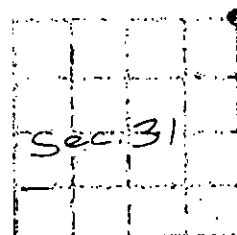
Section

Office of Clerk and Recorder, County of Lincoln

This "corner record" was filed for record on 2/28/2000

was noted on the cross-index plat and is assigned page No. 10430

in book No. Coral M. Cumming By Pub
County Official



Cross Index No. N E Sec. Cor. S31 T. 25 N., R. 29 W., PMM

© THIS CORNER