

CERTIFIED CORNER RECORDATION

Corner N 1/4 Sec. 31 T. 25 N., R. 29 W., P.M.M. Lincoln County

Record :

1916 original GLO notes by S. Frank Walters.

"Set a granitestone, 24 x 14 x 6 ins., 18 ins. in the ground, for 1/4 sec. cor., marked 1/4 on N. face; from which

A pine, 6 ins. in diam., bears S. 25 1/4° W., 23 lks. dist., marked 1/4 S 31 BT.

A pine, 6 ins. in diam., bears N. 22 1/4° W, 13 lks. dist., marked 1/4 S 30 BT."

Found Evidence :

Found original stone marked 1/4 on N. face. No original Bearing Tree's were found.

Perpetuation :

Established two (2) new Bearing Trees, from which:

A larch, 8 ins. in diam., bears N. 10° W., 13.8 ft. dist.

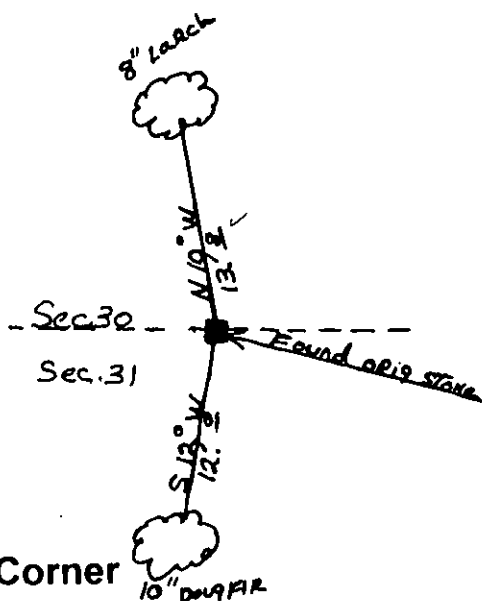
A douglas fir, 10 ins. in diam., bears S. 12° W., 12.0 ft. dist.

Painted 6 inch wide red bands around Bearing Trees with Bearing tree and warning signs attached.

Declination: 17° E

T25N R29W S31 1/4 BT

T25N R29W S30 1/4 BT



Sketch of Corner

CERTIFICATION

I, Rick Shaver

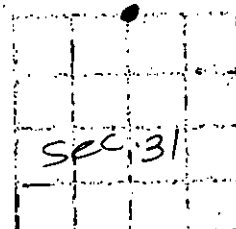
certify the information shown herein is true and correct

Rick Shaver
Signature of Ground Party Chief

I, Kenneth E. Davis
certify that this Corner Record correctly represents work performed by me or under my direction in compliance with the "Corner Recordation"

Kenneth E. Davis
(70-23181 et seq. M.C.A.)
4975-S
Signature of Surveyor & Seal
Date 2/28/2010 Reg. No. 4975-S
Employer: Davis Surveying, Inc.

Section



Office of Clerk and Recorder, County of Lincoln

This "corner record" was filed for record on 2/28/2010 10424

was noted on the cross-index plat and is assigned page No. 10424
in book No. Coral M. Cummings By PIB

County Official

Cross Index No. N 1/4 Sec. 31 T. 25 N., R. 29 W., PMM

• THIS CORNER