

CERTIFIED CORNER RECORDATION

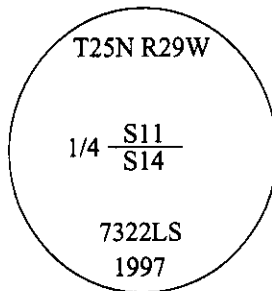
Corner 1/4 Secs. 11 & 14 T. 25N R. 29W P.M., MT Lincoln County

- I. 1916 G.L.O. Original record by Frank Walters et. al.: Set a shalestone, 18x12x6 ins., 12 ins. in the ground, for 1/4 sec. cor., mkd. "1/4" on the North face. Established two bearing trees.
- II. Found a shale stone, 18x12x6 ins., mkd. "1/4", lying loose, East, 30.0 ft. from a position as determined by distance-distance intersect, from original bearing trees.

Original bearing trees:

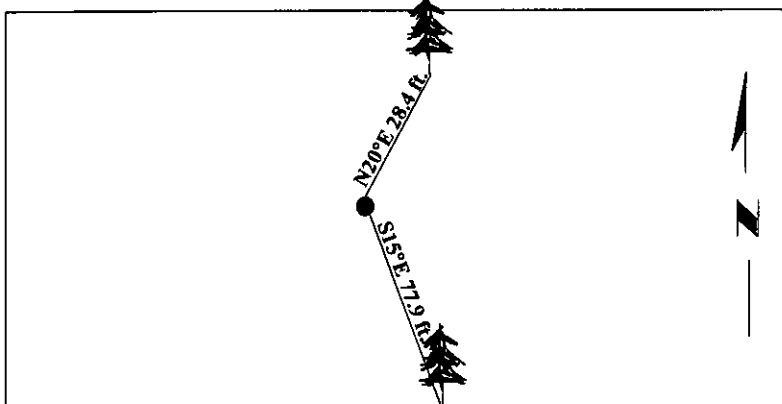
- A larch, 15 ins. diam., bears N20°E, 28.4 ft. dist., scribe visible. (record)
- A larch, 26 ins. diam., bears S15°E, 77.9 ft. dist., "14 BT" visible. (record)

- III. At the corner position, as determined by distance-distance intersect from original bearing trees, set a 30 ins. long x 2 1/2 in. diam. aluminum pipe, 10 ins. above the ground, with a 3 1/4 ins. diam. aluminum cap, surrounded with a stone collar, mkd. as shown.



Buried the original found stone alongside monument.
Painted bearing trees and attached Land Survey Monument and Bearing Tree signs.

Magnetic Declination: 20° East.



SKETCH OF CORNER

<p>CERTIFICATION</p> <p>I, <u>Jeff Hintz</u> certify the information shown herein is true and correct.</p> <hr/> <p>I, <u>Alvah F. Hughes</u> certify that this Corner Record correctly represents work performed by me or under my direction in compliance with the "Corner Recordation Act" (70-22-101, et seq., M.C.A.)</p> <p style="text-align: center;"><i>Alvah F. Hughes</i> Signature of Surveyor & Seal</p> <p>Date: <u>10/15/97</u></p> <p>Reg. No.: <u>7322LS</u></p> <p>Employer: <u>U.S. FOREST SERVICE</u></p>	
--	--

Office of Clerk and Recorder, County of Lincoln This "corner record" was filed for record on 12-26-97 was noted on the cross-index plat and is assigned page No. 10039 in book No. _____

Carol M. Cummins
County Official

