

CERTIFIED CORNER RECORDATION

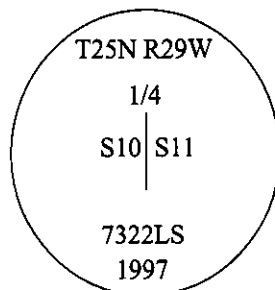
Corner 1/4 Secs. 10 and 11 T. 25N R. 29W P.M., MT Lincoln County

- I. 1916 G.L.O. Original record by Frank Walters et. al.: Set a shalestone, 20x10x6 ins., 13 ins. in the ground, for 1/4 sec. cor., mkd. "1/4" on the West face. Established two bearing trees.
- II. Found a loosely set stone, mkd. "1/4" on the West face. Stone is located 200 ft. below a flat ridgetop, on the East slope.

from which:

A fir, 22 ins. diam., bears S77°E, 13.9 ft. dist., scribe visible. (GLO-record)
A rootcrown with rotten remains, bears S74°W, 7.9 ft. dist. (GLO-record)

- III. At the corner position, as determined by the found original stone, set a 30 ins. long x 2 1/2 in. diam. aluminum pipe, 7 ins. above the ground, with a 3 1/4 ins. diam. aluminum cap, mkd. as shown.

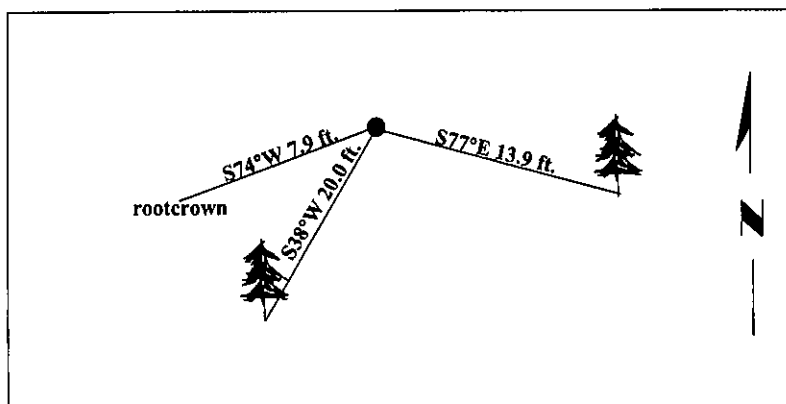


Established one new bearing tree:

A fir, 13 ins. diam., bears S38°W, 20.0 ft. dist., mkd. "1/4 S10 BT".

Buried the original found stone alongside monument.
Painted bearing trees and attached Land Survey Monument and Bearing Tree signs.

Magnetic Declination: 20° East.



SKETCH OF CORNER

CERTIFICATION	
I. <u>Thomas Hommel</u>	certify the information shown herein is true and correct.
I. <u>Alvah F. Hughes</u>	certify that this Corner Record correctly represents work performed by me or under my direction in compliance with the "Corner Recordation Act" (70-22,101, et seq., M.C.A.)
Date: <u>10/15/97</u>	Signature of Surveyor & Seal
Reg. No.: <u>7322LS</u>	
Employer: <u>U.S. FOREST SERVICE</u>	

Office of Clerk and Recorder, County of Lincoln. This "corner record" was filed for record on 12-26-97 was noted on the cross-index plat and is assigned page No. 10013 in book No. _____

Carol M. Cumming By DEB
County Official

Sec. 11			

● - corner this sheet