

## INSTRUCTIONS

1. Original and/or subsequent record used to evaluate the corner position.
2. Description of evidence found, note discrepancies in the record, state method of establishing lost or obliterated corners.
3. Description of monument and accessories set to perpetuate the corner position.
4. Sketch of corner, show all pertinent data which can best be shown in a sketch example, corner marking, topography ties, position of accessories, etc.
5. Certification must be signed and sealed by Land Surveyor registered in the State of Montana.
6. Fill in Cross Index & Section Diagram at bottom of sheet.

## CERTIFIED CORNER RECORDATION

Corner # 3/2 T. 25 N. R. 28 W. P.M.M. LINCOLN County

RECORD: 1903 Set a sandstone, 14x12x5 ins., 10 ins. in the ground, for 1/4 sec. cor., marked 1/4 on W. face: from which

A pine, 22 ins. diam., bears S.50°30'E., 10 lks.(6.60 ft.) dist., marked 1/4 S2BT.

A pine, 24 ins. diam., bears S.76°15'W., 23 lks.(15.18 ft.) dist., marked 1/4 S3BT.

RECORD: 1970. BLM. The 1/4 sec. cor. of secs. 2 and 3, monumented with a sandstone, 14x12x5 ins., firmly set, mkd. 1/4 on the W. face, and witnessed by the original bearing trees:

A matured pine, 22 ins. diam., bears S.50 1/2°E., 10 lks. dist., mkd. 1/4 S2.

A matured pine, 24 ins. diam., bears S.76 1/4°W., 23 lks. dist., mkd. with an overgrown blaze.

At the corner point

Set an iron post, 30 ins. long, 2 1/2 ins. diam., 24 ins. in the ground, with brass cap mkd.

from which new bearing trees:

A larch 6 ins. diam., bears N.53°E., 42 lks.(27.72 ft.) dist., mkd. 1/4 S2BT.

A larch, 6 ins. diam., bears S.48 1/2°W., 62 lks.(40.92 ft.) dist., mkd. 1/4 S3BT.

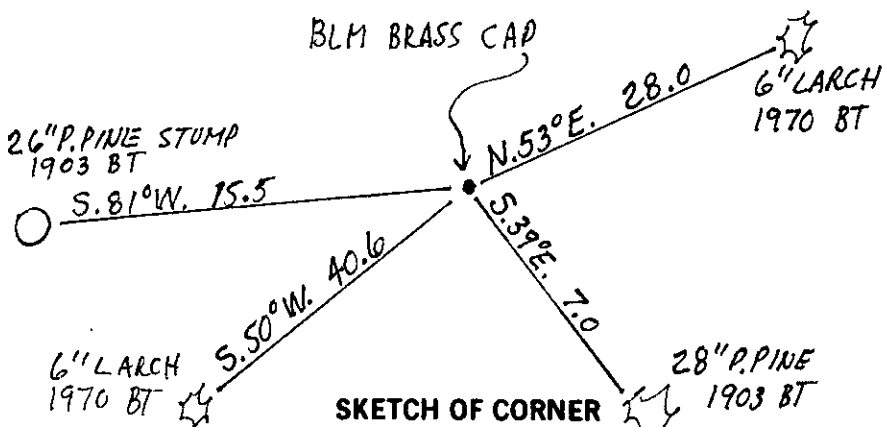
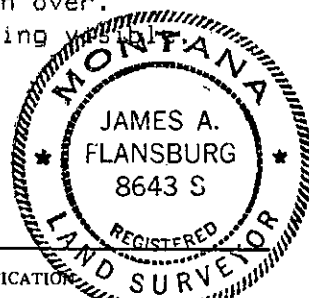
Bury the original stone alongside the iron post.

FOUND: 1993 A BLM brass cap 4 ins. above the ground marked as shown above.  
A 6 inch dia. larch bears N.53°E., 28.0 ft. scribing visible.  
A 28 inch dia. p.pine bears S.39°E., 7.0 ft. scribing visible.  
A 6 inch dia. larch bears S.50°W., 40.6 ft. scribing grown over.  
A 26 inch dia. p.pine stump bears S.81°W., 15.5 ft. scribing visible.

PERPETUATION: Placed BT and Land Survey Monument signs.

Painted the blazes red.

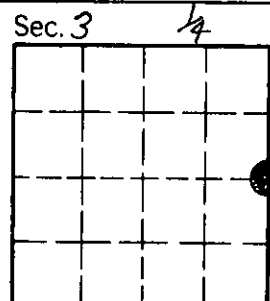
Decl. 19 1/2°E.



CERTIFICATION  
I, EDDO M. FLURI  
certify the information shown herein is true and correct.  
EDDO M. FLURI  
Signature Ground Party Chief  
I, JAMES A. FLANSBURG  
certify that this Corner Record correctly represents work performed by me or under my direction in compliance with the "Corner Recordation Act" (70-22-101, et seq., M.C.A.)  
James A. Flansburg  
Signature of Surveyor & Seal  
Date: 8-12-99 Reg. No. 8643 S  
Employer: USFS

Office of Clerk and Recorder, County of LINCOLN. This "corner record" was filed for record on JAN 12, 1995 was noted on the cross-index plat and is assigned page No. 7019, in book No. Coral M. Cummings By DIB County Official

Cross Index No. C-17 T. 25 N. R. 28 W. PMM



• - corner this sheet