

INSTRUCTIONS

1. Original and/or subsequent record used to evaluate the corner position.
2. Description of evidence found, note discrepancies in the record, state method of establishing lost or obliterated corners.
3. Description of monument and accessories set to perpetuate the corner position.
4. Sketch of corner, show all pertinent data which can best be shown in a sketch example, corner marking, topography ties, position of accessories, etc.
5. Certification must be signed and sealed by Land Surveyor registered in the State of Montana.
6. Fill in Cross Index & Section Diagram at bottom of sheet.

CERTIFIED CORNER RECORDATION

 Corner 34/35
3/2
T. 25-26N. R. 28W. P.M.M. LINCOLN County

RECORD: 1903 Set a limestone, 12x10x5 ins., 8 ins. in the ground, for cor. of secs. 2,3,34, and 35, marked with 2 notches on E. and 4 notches on W. edge: from which

A fir, 18 ins. diam., bears N.89°30'E., 23 lks.(15.18 ft.) dist., marked T26NR28WS35BT.

A fir, 10 ins. diam., bears S.1°45'E., 18 lks.(11.88 ft.) dist., marked T25NR28WS2BT.

A fir, 8 ins. diam., bears S.74°35'W., 25 lks.(16.50 ft.) dist., marked T25NR28WS3BT.

A fir, 6 ins. diam., bears N.17°20'W., 15 lks.(9.90 ft.) dist., marked T26NR28WS34BT.

RECORD: 1964. BLM. T.26N.R.28W.,P.M.,M. The cor. of secs. 2,3,34 and 35, on the S. Bdy. of the Tp., monumented with a limestone, 12x10x5 ins., firmly set and mkd. with 2 grooves on the E. and 4 grooves on the W. faces, and witnessed by the remains of the original bearing trees.

At the corner point

Set an iron post, 30 ins. long, 2 1/2 ins. diam., 27 ins. in the ground, with brass cap mkd.

from which

The remains of the original bearing trees:

A stump, 18 ins. diam., bears N.81 1/2°E., 23 lks. dist., mkd. T26NR28WS35BT. (Record: N.89 1/2°E., 23 lks.)

A stump, 10 ins. diam., bears S.6°W., 18 lks. dist., mkd. T25NR28WS2BT. (Record: S.1 3/4°E., 18 lks.)

A fir, 9 ins. diam., bears S.74 1/2°W., 29 lks.(19.14 ft.) dist., mkd. with an overgrown blaze. (Record: S.74°35'W., 25 lks.)

A fir, 6 ins. diam., bears N.17 1/2°W., 15 lks. dist., mkd. with an overgrown blaze. (Record: N.17°20'W., 15 lks.)

The new bearing trees:

A fir, 8 ins. diam., bears N.3 1/2°E., 46 lks.(30.36 ft.) dist., mkd. T26NR28WS35BT.

A fir, 7 ins. diam., bears S.15°E., 37 lks.(24.42 ft.) dist., mkd. T25NR28WS2BT

Bury the original stone alongside the iron post.

FOUND: A BLM brass cap 3 ins. above the ground marked as shown above.

An 18 inch dia. fir stump bears N.82°E. 15.2 ft. scribing visible.

A 10 inch dia. fir stump bears S.6°W., 11.7 ft. scribing visible.

A 14 inch dia. fir bears S.75°W., 18.9 ft. scribing visible.

A 5 inch dia. fir bears N.17°W., 9.6 ft. with a blaze.

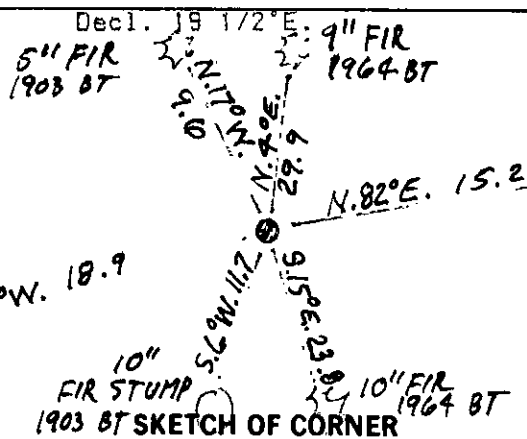
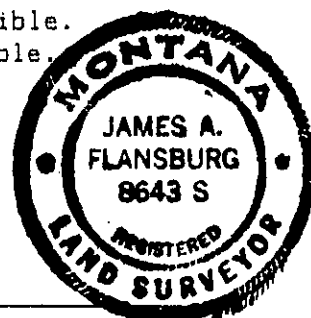
A 9 inch dia. fir bears N.4°E., 29.9 ft. scribing visible.

A 10 inch dia. fir bears S.15°E., 23.8 ft. scribing visible.

PERPETUATION: BT signs were on the trees.

Placed Land Survey Monument signs on the back of the BT's.

Painted the blazes red.



CERTIFICATION

I, EDDO M. FLURI
 certify the information shown herein is true and correct.

Edo M. Fluri
 Signature Ground Party Chief

I, JAMES A. FLANSBURG
 certify that this Corner Record correctly represents work performed by me or under my direction in compliance with the "Corner Recordation Act" (70-22-101, et seq., M.C.A.)

James A. Flansburg
 Signature of Surveyor & Seal

Date: 8-12-94 Reg. No. 8643S

Employer: USFS

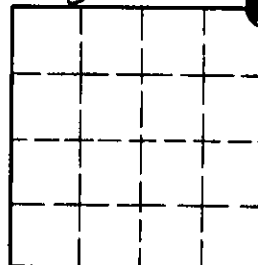
Office of Clerk and Recorder, County of LINCOLN . This "cornerrecord" was filed for record on JAN 12, 1995was noted on the cross-index plat and is assigned page No. 7018 , in

book No. _____

Coral M. Cummings
 County Official

Cross Index No. A-17 T. 25N. R. 28W. P.M.M.

Adopted July 1, 1981, Montana Board of Professional Engineers & Land Surveyors

Sec. 3

• - corner this sheet