

INSTRUCTIONS

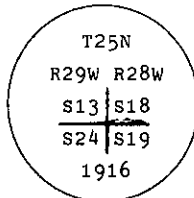
1. Original and/or subsequent record used to evaluate the corner position.
2. Description of evidence found, note discrepancies in the record, state method of establishing lost or obliterated corners.
3. Description of monument and accessories set to perpetuate the corner position.
4. Sketch of corner, show all pertinent data which can best be shown in a sketch example, corner marking, topography ties, position of accessories, etc.
5. Certification must be signed and sealed by Land Surveyor registered in the State of Montana.
6. Fill in Cross Index & Section Diagram at bottom of sheet.

CERTIFIED CORNER RECORDATION

Corner SW Sec. Cor. of S18 T. 25 N. R. 28 W. P.M.M. Lincoln County

I. 1903 G.L.O. record by C. Albee: Set a stone and 4 bearing trees.

1916 G.L.O. record by S. Walters et al: The cor. of sec. 13, 18, 19, and 24, which is a limestone 10x6x6 ins. above ground, mkd. and witnessed as described by the Surveyor General. I obliterate all traces of this old cor. and at same spot set an iron post, 3 ft. long, 3 ins. in diam., 24 ins. in the ground, for cor. of secs. 13, 18, 19, and 24, with brass cap mkd.



From which

- A tamarack, 12 ins. diam., bears N46° E, 112 lks. (73.92 ft.) dist., mkd. T25N R28W S18 BT.
- A tamarack, 14 ins. diam., bears S85 1/4° E, 90 lks. (59.40 ft.) dist., mkd. T25N R28W S19 BT.
- A fir, 20 ins. diam., bears S62 3/4° W, 125 lks. (82.50 ft.) dist., mkd. T25N R29W S24 BT.
- A pine, 6 ins. diam., bears N27° W, 81 lks. (53.46 ft.) dist., mkd. T25N R29W S13 BT.

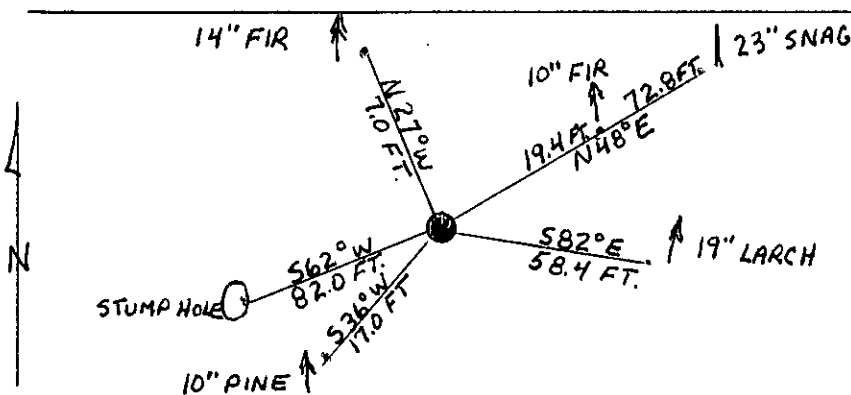
II. Found a 3 ins. diam. iron pipe, with a 3 1/2 ins. diam. brass cap, 12 ins. above the ground, mkd. as shown, from which:

- A dead larch, 23 ins. diam., bears N48° E, 72.8 ft. dist., visible scribing.
- A larch, 19 ins. diam., bears S82° E, 58.4 ft. dist., visible scribing.
- A stump hole, bears S62° W, 82.0 ft. dist.
- No evidence of S13 BT.

III. Established 3 new bearing trees:

- A douglas fir, 10 ins. diam., bears N48° E, 19.4 ft. dist., mkd. T25N R28W S18 BT.
- A ponderosa pine, 10 ins. diam., bears S36° W, 17.0 ft. dist., mkd. T25N R29W S24 BT.
- A douglas fir, 14 ins. diam., bears N27° W, 7.0 ft. dist., mkd. T25N R29W S13 BT.

Painted red bands around the bearing trees and attached Land Survey Monument and Bearing Tree signs.
Set a 6 ft. galvanized steel guard post with Land Survey Marker and Property Boundary decals, West, 3 ft.
Magnetic Declination: 20° East



SKETCH OF CORNER

CERTIFICATION

I, Kevin A. Todd
certify the information shown herein is true and correct.

Kevin A. Todd
Signature Ground Party Chief

I, Alvah F. Hughes
certify that this Corner Record correctly represents work performed by me or under my direction in compliance with the "Corner Recordation Act" (70-22-101, et seq., MCA).

Alvah F. Hughes
Signature of Surveyor & Seal

Date: 1/8/91 Reg. No. 7322

Employer: U.S. FOREST SERVICE

REGISTERED LAND SURVEYOR

Office of Clerk and Recorder, County of Lincoln. This "corner record" was filed for record on 1-10-91 was noted on the cross-index plat and is assigned page No. 4492, in book No. Coral M. Cummings by Burt Buckhoff

County Official

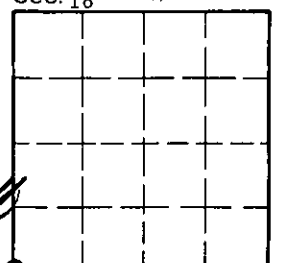
N-1

25 N

28 W

Cross Index No. T. R. PMM

Sec. 18



• - corner this sheet