

INSTRUCTIONS

1. Original and/or subsequent record used to evaluate the corner position.
2. Description of evidence found, note discrepancies in the record, state method of establishing lost or obliterated corners.
3. Description of monument and accessories set to perpetuate the corner position.
4. Sketch of corner, show all pertinent data which can best be shown in a sketch example, corner marking, topography ties, position of accessories, etc.
5. Certification must be signed and sealed by Land Surveyor registered in the State of Montana.
6. Fill in Cross Index & Section Diagram at bottom of sheet.

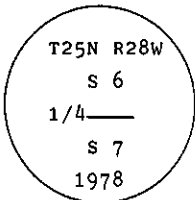
CERTIFIED CORNER RECORDATION

Corner N 1/4 of S7 T. 25 N. R. 28 W. Lincoln County

I. 1903 G.L.O. record by C. Albee et al: Set a stone and two bearing trees.

1978 BLM remonumentation : The 1/4 sec. cor. of secs. 6 and 7, monumented with a sandstone, 22x12x6 ins., firmly set 17 ins. in the ground, mkd. 1/4 on the N face, and witnessed by the original bearing trees:  
 A pine, 18 ins. diam., bears N41 3/4° E, 46 lks. (30.36 ft.) dist., mkd. 1/4 S6 BT.  
 A pine, 20 ins. diam., bears S5 1/2° W, 40 lks. (26.40 ft.) dist., mkd. 1/4 S7 BT.

At the corner point, set an iron post, 30 ins. long, 2 1/2 ins. diam., 22 ins. in the ground, with brass cap mkd.

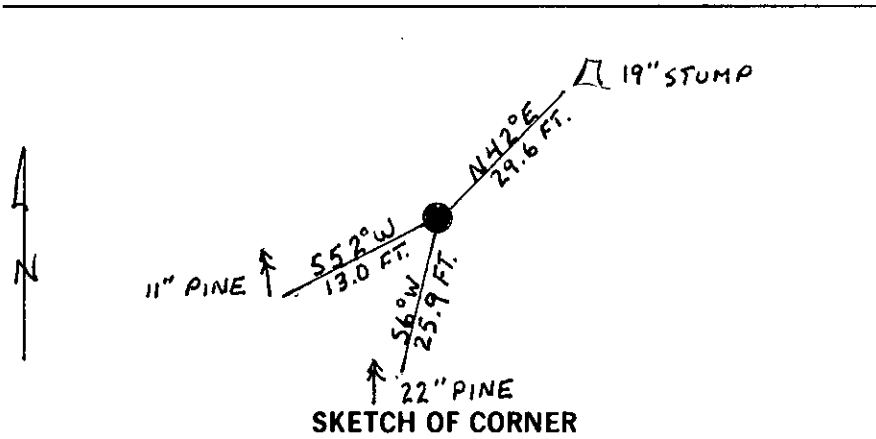


Bury original stone alongside and raise a flat mound of stone, 3 ft. diam., around the iron post.

II. Found a 2 1/2 ins. diam. pipe, 12 ins. out of the ground, with BLM brass cap mkd. as shown, from which  
 A pine stump, 19 ins. diam., bears N42° E, 29.6 ft. dist., visible scribing.  
 A ponderosa pine, 22 ins. diam., bears S6° W, 25.9 ft. dist., visible scribing.

III. Established one new bearing tree  
 A ponderosa pine, 11 ins. diam., bears S52° W, 13.0 ft. dist., mkd. 1/4 S7 BT.

Painted red bands around the bearing trees and attached Land Survey Monument and Bearing Tree signs.  
 Set a 6 ft. galvanized steel guard post with Land Survey Marker and Property Boundary decals, West, 3 ft.  
 Magnetic Declination: 20° East



CERTIFICATION

I, Kevin A. Todd  
 certify the information shown herein is true and correct.  
Kevin A. Todd  
 Signature Ground Party Chief

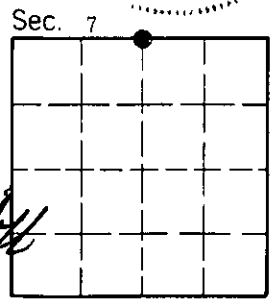
I, Alvah F. Hughes  
 certify that this Corner Record correctly represents work performed by me or under my direction in compliance with the "Corner Recordation Act" (70-22-101, et seq., M.C.A.)  
Alvah F. Hughes  
 Signature of Surveyor & Seal

Date: 1/8/91 Reg. No. 7322  
 Employer: U.S. FOREST SERVICE

MONTANA REGISTERED LAND SURVEYOR

Office of Clerk and Recorder, County of Lincoln. This "corner record" was filed for record on 1-10-91 was noted on the cross-index plat and is assigned page No. 4485, in book No. \_\_\_\_\_

Coral M Cummings by Bill Breckoff  
 County Official



E-3 25 N 28 W  
 Cross Index No. \_\_\_\_\_ T. \_\_\_\_\_ R. \_\_\_\_\_ PMM • - corner this sheet