

## INSTRUCTIONS

1. Original and/or subsequent record used to evaluate the corner position.
2. Description of evidence found, note discrepancies in the record, state method of establishing lost or obliterated corners.
3. Description of monument and accessories set to perpetuate the corner position.
4. Sketch of corner, show all pertinent data which can best be shown in a sketch example, corner marking, topography ties, position of accessories, etc.
5. Certification must be signed and sealed by Land Surveyor registered in the State of Montana.
6. Fill in Cross Index & Section Diagram at bottom of sheet.

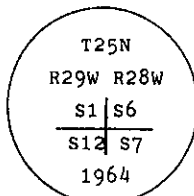
## CERTIFIED CORNER RECORDATION

Corner NW Sec. Cor. of S7 T. 25 N. R. 28 W. P.M.M. Lincoln County

I. 1903 G.L.O. record by C. Albee et al: Set a stone and four bearing trees.

1964 BLM remonumentation: The cor. of secs. 1, 6, 7 and 12, on the E. bdy. of the Tp., monumented with a limestone, 12x10x5 ins., loosely set and mkd. with 1 groove on the N and 5 grooves on the S faces, and witnessed by the remains of the original bearing trees.

At the corner point, set an iron post, 30 ins. long, 2 1/2 ins. diam., 27 ins. in the ground, with brass cap mkd.



from which the remains of the original bearing trees:

A pine, 6 ins. diam., bears N38 3/4° E, 30 lks. (19.80 ft.) dist., mkd. T25N R28W S6 BT.

[Record: N 38 3/4° E, 20 lks. (13.20 ft.)]

A pine, 6 ins. diam., bears S42 1/4° E, 11 lks. (7.26 ft.) dist., mkd. T25N R28W S7 BT. (Record)

A pine, 6 ins. diam., bears S30 3/4° W, 38 lks. (25.08 ft.) dist., T25N R29W S12 BT. (Record)

A dead pine, 4 ins. diam., bears N53° W, 14 lks. (9.24 ft.) dist., mkd. T25N R29W S1 BT.

[Record: N49° W, 14 lks. (9.24 ft.)]

The new bearing tree:

A pine, 6 ins. diam., bears N64° W, 29 lks. (19.14 ft.) dist., mkd. T25N R29W S1 BT.

Bury the original stone alongside the iron post.

1982 Certified Corner Recordation by J. Ninneman: No new accessories established.

II. Found a 2 1/2 ins. diam. pipe, 4 ins. out of the ground, with BLM brass cap mkd. as shown, from which

A stump, 7 ins. diam., bears N39° E, 14.1 ft. dist., visible scribing.

A dead lodgepole pine, 6 ins. diam., bears S40° E, 7.9 ft. dist., visible scribing.

A lodgepole pine, 6 ins. diam., bears S31° W, 25.2 ft. dist., visible scribing.

A lodgepole pine, 6 ins. diam., bears N64° W, 19.2 ft. dist., visible scribing.

III. Established two new bearing trees

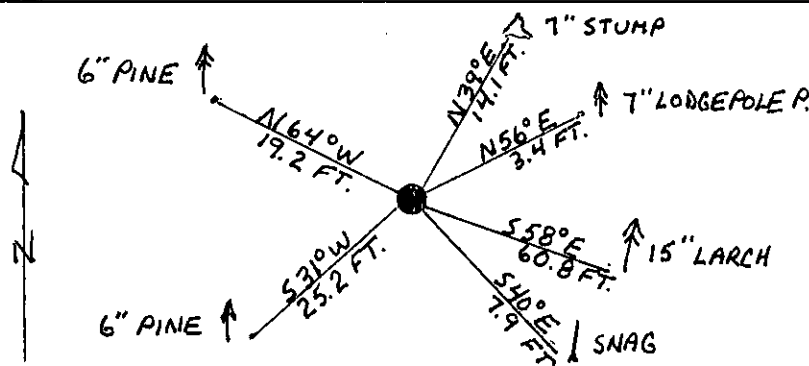
A lodgepole pine, 7 ins. diam., bears N56° E, 3.4 ft. dist., mkd. T25N R28W S6 BT.

A larch, 15 ins. diam., bears S58° E, 60.8 ft. dist., mkd. T25N R28W S7 BT.

Painted red bands around the bearing trees and attached Land Survey Monument and Bearing Tree signs.

Set a 6 ft. galvanized steel guard post with Land Survey Marker and Property Boundary decals. North, 3 ft.

Magnetic Declination: 20° East



SKETCH OF CORNER

## CERTIFICATION

I, Kevin A. Todd  
certify the information shown herein is true and correct.

Kevin A. Todd  
Signature Ground Party Chief

I, Alvah F. Hughes  
certify that this Corner Record correctly represents the corner as established by me or under my direction in compliance with the "Corner Recordation Act" (70-22-101, et seq., M.C.A.)

Alvah F. Hughes  
Signature of Surveyor & Seal

Date: 1/8/91 Reg. No. 7322 LS 7322 LS

Employer: U.S. FOREST SERVICE

Office of Clerk and Recorder, County of Lincoln. This "corner

record" was filed for record on 1-10-91

was noted on the cross-index plat and is assigned page No. 4481, in

book No. \_\_\_\_\_

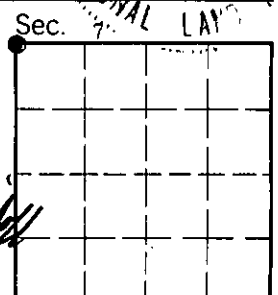
Coral M Cummings by Eric Busch  
County Official

E-1

25 N

28 W

Cross Index No. \_\_\_\_\_ T. \_\_\_\_\_ R. \_\_\_\_\_ PMM



• - corner this sheet