

CERTIFIED CORNER RECORDATION

Corner CWWNE 1/256 S4 T 25 N. R. 28 W. P.M.M. Lincoln County

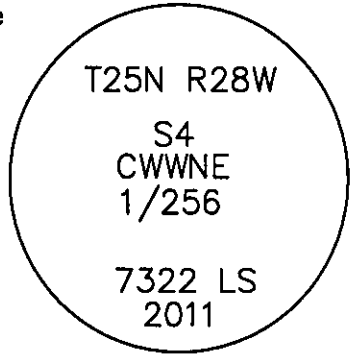
- I. Record: None
- II. Found: No record monuments found.
- III. Perpetuation: At the corner point, determined by survey, set a 5/8 ins. diam. steel rebar 30 ins. long, 29 ins. in the ground, with a 3 1/4 ins. diam. Aluminum cap marked as shown below from which:
 - A Spruce, 8 ins. diam., bears S77°E, 52.20 ft. dist., scribed CWWNE 1/256 S4 BT.
 - A Spruce, 26 ins. diam., bears S19°W, 57.30 ft. dist., scribed CWWNE 1/256 S4 BT.

Painted faces and 6 in. wide red bands to all bearing trees and attached Land Survey Monument and Bearing Tree signs.

Set steel posts on line 2.30 ft. East and 3.30 ft. South of set monument with attached Survey Monument and Property Line stickers.

Magnetic declination: 18° East

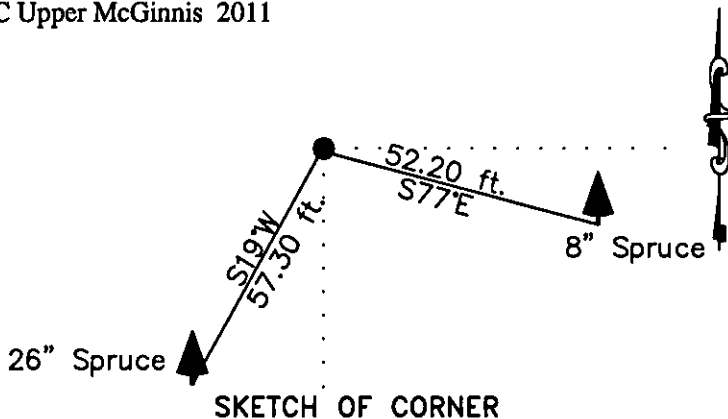
Equipment used: Hand compass and loggers tape



Note: See Certificate of Survey No. 4121 Lincoln County Records for additional survey information.

Kootenai Surveyors Inc., 314 California Av., Libby, MT. 59923 (406) 293-4354

PCTC Upper McGinnis 2011



CERTIFICATION

I, Kelly Rooney
 certify the information shown herein is true and correct.
Kelly Rooney
 Signature Ground Party Chief

I, Alvah F. Hughes
 certify that this Corner Record correctly represents work performed by me or under my direction in compliance with the "Corner Recordation Act" (70-22-101, et seq., M.C.A.)
Alvah F. Hughes
 Signature of Surveyor & Seal

Date: 11/14/2011 Reg. No. 7322-LS
 Employer: Kootenai Surveyors Inc.

Office of Clerk and Recorder, County of Lincoln This "corner

record" was filed for record on 236198 BOOK: CCR CC&R'S PAGE: 11930 Pages: 1

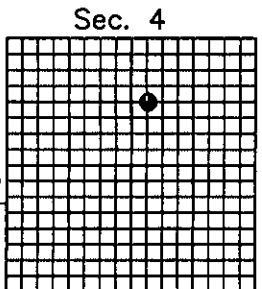
was noted on the cro STATE OF MONTANA LINCOLN COUNTY

book No. RECORDED: 12/01/2011 2:05 KOI: CC&R'S

TAMMY D. LAUER CLERK AND RECORDER
 FEE: \$0.00 BY: *Tammy D. Lauer*
 TO: KOOTENAI SURVEYORS INC. P.O. BOX 393, LIBBY, MT 59923

Cross Index No. _____ T. 25N R. 28W P.M., MT

Adopted July 1, 1981, Montana Board of Professional Engineers & Land Surveyors



• corner this sheet