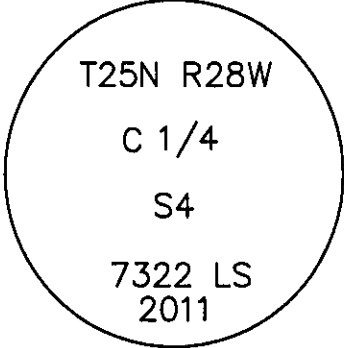


CERTIFIED CORNER RECORDATION

Corner C 1/4 S4 T. 25 N. R. 28 W. P.M.M. Lincoln County

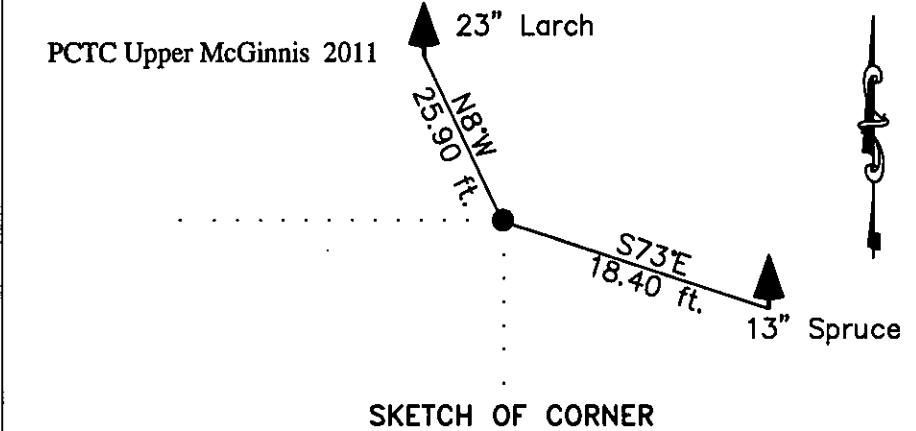
- I. Record: None
 - II. Found: No record monuments found.
 - III. Perpetuation: At the corner point, determined by survey, set a 2 3/4 ins. diam. Aluminum pipe 30 ins. long, 27 ins. in the ground, with a 3 1/4 ins. diam. Aluminum cap marked as shown below from which:
 - A Spruce, 13 ins. diam., bears S73°E, 18.40 ft. dist., scribed C 1/4 S4 BT.
 - A Larch, 23 ins. diam., bears N8°W, 25.90 ft. dist., scribed C 1/4 S4 BT.
- Painted faces and 6 in. wide red bands to all bearing trees and attached Land Survey Monument and Bearing Tree signs.
- Set steel posts on line 1.60 ft. West and 1.80 ft. South of set monument with attached Survey Monument and Property Line stickers.

Magnetic declination: 18° East
 Equipment used: Hand compass and loggers tape



Note: See Certificate of Survey No. 4121 Lincoln County Records for additional survey information.

Kootenai Surveyors Inc., 314 California Av., Libby, MT. 59923 (406) 293-4354

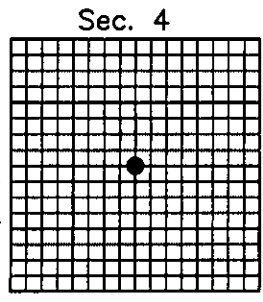


CERTIFICATION

I, Kelly Rooney
 certify the information shown herein is true and correct.
Kelly Rooney
 Signature Ground Party Chief

I, Alvah F. Hughes
 certify that this Corner Record correctly represents work performed by me or under my direction in compliance with the "Corner Recordation Act" (70-22-101 et seq., M.C.A.)
Alvah F. Hughes PLS 7322LS
 Signature of Surveyor & Seal
 Date: 11/11/2011 Reg. No. 7322-LS
 Employer: Kootenai Surveyors Inc.

Office of Clerk and Recorder, County of Lincoln. This "corner record" was filed for record on 236197 BOOK: CCR CC&R'S PAGE: 11929 Pages: 1 was noted on the cross STATE OF MONTANA LINCOLN COUNTY RECORDED: 12/01/2011 2:00 KOI: CC&R'S book No. TAMMY D. LAUER CLERK AND RECORDER FEE: \$0.00 BY: *Tammy D. Lauer* TO: KOOTENAI SURVEYORS INC. P.O. BOX 393, LIBBY, MT 59923



Cross Index No. C 11 T. 25N R. 28W P.M., MT

• corner this sheet