

CERTIFIED CORNER RECORDATION

Corner NE 1/16 S4 T. 25 N. R. 28 W. P.M.M. Lincoln County

- I. Record: None
- II. Found: No record monuments found.
- III. Perpetuation: At the corner point, determined by survey, set a 5/8 ins. diam. steel rebar 30 ins. long, 29 ins. in the ground, with a 3 1/4 ins. diam. Aluminum cap marked as shown below from which:

A Fir, 13 ins. diam., bears S38°E, 19.30 ft. dist., scribed NE 1/16 S4 BT.

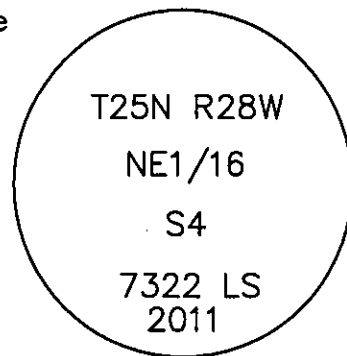
A Larch, 13 ins. diam., bears S11°W, 29.40 ft. dist., scribed NE 1/16 S4 BT.

Painted faces and 6 in. wide red bands to all bearing trees and attached Land Survey Monument and Bearing Tree signs.

Set steel posts on line 1.60 ft. South and 1.50 ft. West of set monument with attached Survey Monument and Property Line stickers.

Magnetic declination: 18° East

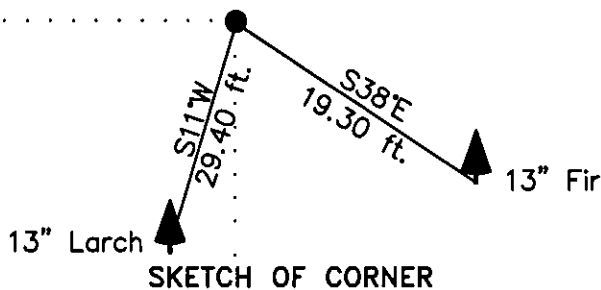
Equipment used: Hand compass and loggers tape



Note: See Certificate of Survey No. 4121 Lincoln County Records for additional survey information.

Kootenai Surveyors Inc., 314 California Av., Libby, MT. 59923 (406) 293-4354

PCTC Upper McGinnis 2011



CERTIFICATION

I, Kelly Rooney
certify the information shown herein is true and correct.
Kelly Rooney
Signature Ground Party Chief

I, Alvah F. Hughes
certify that this Corner Record correctly represents work performed by me or under my direction in compliance with the "Corner Recordation Act" (70-22-101, et seq., M.C.A.)
Alvah F. Hughes
Signature of Surveyor & Seal

Date: 11/16/2011 Reg. No. 7322-LS

Employer: Kootenai Surveyors Inc.

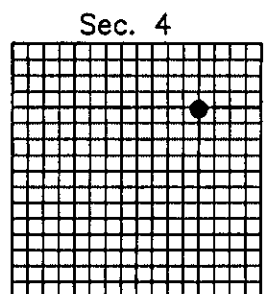
Office of Clerk and Recorder, County of Lincoln This "corner

record" was filed for re
was noted on the cross
book No. _____

236194 BOOK: CCR CC&R'S PAGE: 11926 Pages: 1
STATE OF MONTANA LINCOLN COUNTY
RECORDED: 12/01/2011 1:45 KOI: CC&R'S
TAMMY D. LAUER CLERK AND RECORDER
FEE: \$0.00 BY: *Heather Brown*
TO: KOOTENAI SURVEYORS INC. P.O. BOX 393, LIBBY, MT 59923

Cross Index No. B-12 T. 25N R. 28W P.M., MT

Adopted July 1, 1981, Montana Board of Professional Engineers & Land Surveyors



• corner this sheet